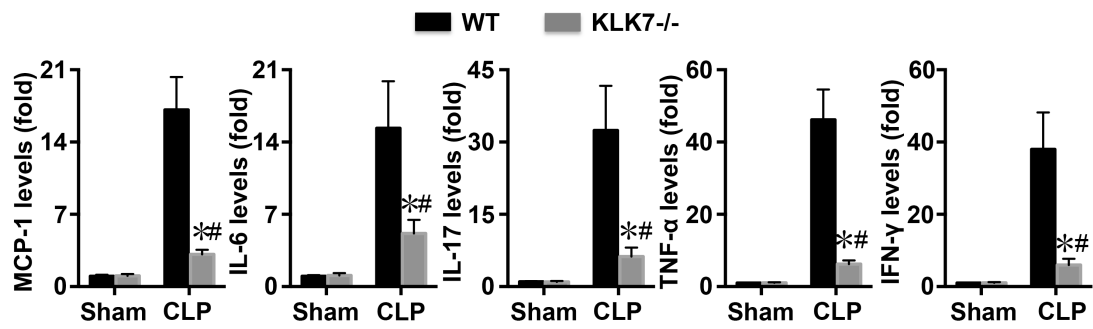


Supplemental materials



Supplemental S1: Effects of KLK7 deletion on sepsis-induced cardiac inflammation. mRNA expression levels of MCP-1, IL-6, IL-17, TNF- α , and IFN- γ were detected. N = 6 in each group. * $p < 0.05$ vs. the CLP + WT group. # $p < 0.05$ vs. the Sham + KLK7-/- group.