

Research Article

A Hybrid Method Integrating a Discrete Differential Evolution Algorithm with Tabu Search Algorithm for the Quadratic Assignment Problem: A New Approach for Locating Hospital Departments

Asaad Shakir Hameed ^{1,2}, Modhi Lafta Mutar ^{1,2}, Haiffa Muhsan B. Alrikabi ³,
Zakir Hussain Ahmed ⁴, Abeer A. Abdul-Razaq⁵ and Huda Karem Nasser²

¹Faculty of Information and Communication Technology, Universiti Teknikal Malaysia Melaka Hang Tuah Jaya, Durian Tunggal, Melaka, Malaysia

²Department of Mathematics, General Directorate of Thi-Qar Education, Ministry of Education, Thi-Qar, Iraq

³Department of Mathematics, College of Education for Pure Sciences, University of Thi-Qar, Nasiriyah, Iraq

⁴Department of Mathematics and Statistics, College of Science, Imam Mohammad Ibn Saud Islamic University (IMSIU), Riyadh, Saudi Arabia

⁵Department of Mathematics, College of Computer Science and Mathematics, Thi-Qar University, Nasiriyah, Iraq

Correspondence should be addressed to Asaad Shakir Hameed; asaadutem@yahoo.com and Zakir Hussain Ahmed; zaahmed@imamu.edu.sa

Received 12 December 2020; Revised 25 January 2021; Accepted 30 January 2021; Published 17 March 2021

Academic Editor: Ali Asghar Rahmani Hosseinabadi

Copyright © 2021 Asaad Shakir Hameed et al. This is an open access article distributed under the Creative Commons Attribution License, which permits unrestricted use, distribution, and reproduction in any medium, provided the original work is properly cited.

The facility layout problem (FLP) is a very important class of NP-hard problems in operations research that deals with the optimal assignment of facilities to minimize transportation costs. The quadratic assignment problem (QAP) can model the FLP effectively. One of the FLPs is the hospital facility layout problem that aims to place comprehensive clinics, laboratories, and radiology units within predefined boundaries in a way that minimizes the cost of movement of patients and healthcare personnel. We are going to develop a hybrid method based on discrete differential evolution (DDE) algorithm for solving the QAP. In the existing DDE algorithms, certain issues such as premature convergence, stagnation, and exploitation mechanism have not been properly addressed. In this study, we first aim to discover the issues that make the current problem worse and to identify the best solution to the problem, and then we propose to develop a hybrid algorithm (HDDETS) by combining the DDE and tabu search (TS) algorithms to enhance the exploitation mechanism in the DDE algorithm. Then, the performance of the proposed HDDETS algorithm is evaluated by implementing on the benchmark instances from the QAPLIB website and by comparing with DDE and TS algorithms on the benchmark instances. It is found that the HDDETS algorithm has better performance than both the DDE and TS algorithms where the HDDETS has obtained 42 optimal and best-known solutions from 56 instances, while the DDE and TS algorithms have obtained 15 and 18 optimal and best-known solutions out of 56 instances, respectively. Finally, we propose to apply the proposed algorithm to find the optimal distributions of the advisory clinics inside the Azadi Hospital in Iraq that minimizes the total travel distance for patients when they move among these clinics. Our application shows that the proposed algorithm could find the best distribution of the hospital's rooms, which are modeled as a QAP, with reduced total distance traveled by the patients.

1. Introduction

The demand for public facilities has been on increase due to the ever-growing population. These facilities include hospitals, schools, universities, train stations, and airports. As such, it has become pertinent to urgently find the best way to design and manage these facilities, as a lack of design leads to financial losses alongside unnecessary waste of time. The facility layout problem (FLP) is an important class of operations research problems that have been studied for several decades [1]. Most facility layout variants are NP-hard; therefore, global optimal solutions are difficult or impossible to compute in a reasonable time [2]. The FLPs include ensuring that the departments are not given similar assignments and that customization and material handling costs are reduced to a minimum. Over the years, few studies have focused on hospital layout problems, except for those involving different facilities.

One of the NP-hard problems is the hospital facility layout problem, which aims to place comprehensive clinics, laboratories, and radiology units within predefined boundaries in a way that minimizes the cost of movement of patients and healthcare personnel [3]. Several models have been proposed to design and facilitate the best layout for the distribution of the facilities. Recent studies proved that the use of the quadratic assignment problem (QAP) to model the FLP leads to identifying the best facilities for the sites in order to minimize the cost. The QAP has been successfully applied in fields such as economics, engineering, and computing because it uses the best distribution of several facilities to same number of locations to minimize computational cost.

The QAP, which is a combinatorial optimization problem (COP), was first introduced in [4] as a mathematical model related to economic activities which can be defined as follows: there are n facilities and n locations. Let f_{ij} be an information flow between facilities i and j (for example, the number of materials transported between the facility pairs) and d_{kl} be the distance between locations k and l . Also, let $\pi = \{\pi(1), \pi(2), \dots, \pi(n)\}$ be an assignment (or permutation or one-to-one mapping between all facilities to locations), where $\pi(i)$ represents the location of the facility i . The aim of the problem is to fix the facilities to different locations such that the sum of the distances multiplied by the corresponding flows is minimized. That is, it aims to minimize the total assignment cost (Z_π), where

$$Z_\pi = \sum_{i=1}^n \sum_{j=1}^n f_{ij} d_{\pi(i)\pi(j)}. \quad (1)$$

In this problem, n facilities and n locations define the problem size; the distance matrix (D) consists of the distances between every location pairs; the flow matrix (F) is the amount of traffic between every facility pairs; and a solution (π) is an assignment of facilities to locations and an objective function defined by total cost of a solution (Z_π). Based on the above, we can summarize the QAP model steps in Figure 1.

Different viewpoints have attracted researchers' attention to study the QAP. From the theoretical viewpoint, the

QAP is an NP-hard problem that cannot be solved in polynomial time when the problem size increases [5, 6]. From the practical viewpoint, many real-life applications can be modeled by the QAP, such as backboard wiring problem in the design of computer and other electronic equipment, hospital, and campus layouts [7]. From the application domain viewpoint, the cost of building hospitals and universities is very high, so renovating them is a better option because it is cheaper [8]. In addition, poorly designed layouts lead to financial losses and unnecessary waste of time [9]. From the technique viewpoint, open and active research is recommended for the enhancement of the QAP optimization techniques [10, 11].

Two classes of approaches have been presented to solve the QAP: the exact approaches and the heuristic approaches. The approaches that deliver the exact solution to the problem are called exact approaches. Many exact approaches have been suggested in many studies, but they cannot find the optimal solution for large sized problem instances within a reasonable computational time [12, 13]. Therefore, an effective heuristic approach that can find the best solutions of the QAP within an acceptable computational time for large sized problem instances is needed. Unlike the exact approaches, heuristic approaches seek good solutions (i.e., near-optimal solutions) within a reasonable computational time without giving guarantee to the optimality of the solutions. Metaheuristics are the most recent heuristic approaches which are applied to various combinatorial optimization problems (COPs) as well as the QAP [14, 15].

Some well-known metaheuristic approaches applied to the QAP are discrete bat algorithm (DBA) [16], genetic algorithm (GA) [17], simulated annealing (SA) [18], tabu search [19], ant colony optimization [20], memetic algorithm (MA) [21], migrating birds optimization (MBO) algorithm [22], differential evolution [23], etc. Out of the metaheuristic approaches, differential evolution (DE) algorithms have been proven to be very efficient in finding solutions that are optimal or nearly optimal within a reasonable computational time for large sized problem instances. However, they are characterized by the slow exploitation of solutions [24]. To solve COPs, a few studies, such as [23, 25], have suggested discrete differential evolution (DDE) algorithms.

In this study, we first aim to discover the issues that make the current problem worse and to identify the best solution to the problem, and then we propose to develop a hybrid algorithm (HDDETS) by combining the DDE and tabu search (TS) algorithms to enhance the exploitation mechanism in the DDE algorithm. Then, the performance of the proposed HDDETS algorithm is evaluated by implementing on the benchmark instances from QAPLIB website and by comparing with DDE and TS algorithms on the benchmark instances. Our experimental investigation shows that the proposed HDDETS algorithm is the best algorithm that could find very good quality solutions to the benchmark instances. Finally, we propose to apply the proposed algorithm to find the optimal distributions of the advisory clinics inside the Azadi Hospital in Iraq that minimizes the total travel distance for patients when they move among these

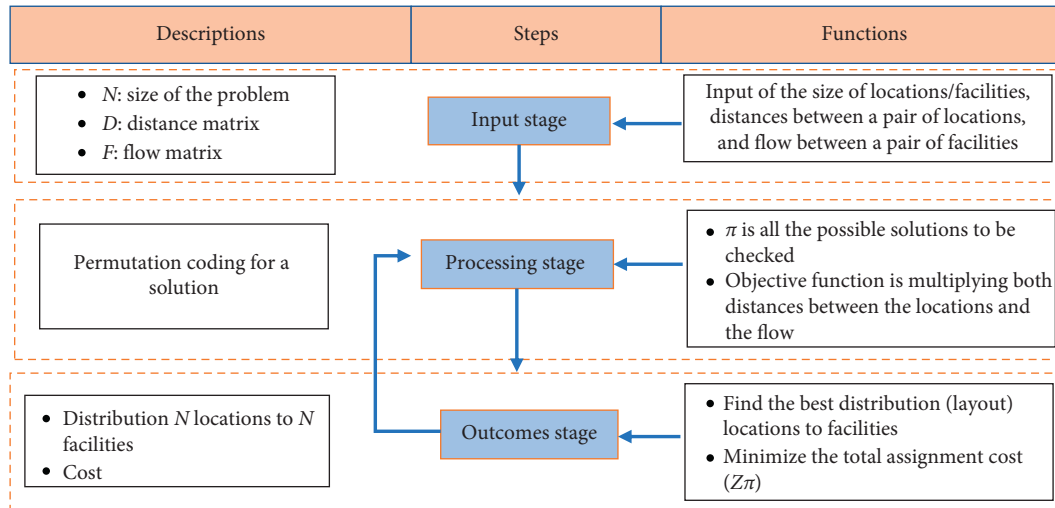


FIGURE 1: QAP model steps.

clinics. Our application shows that the proposed algorithm could find the best distribution of the hospital's rooms, which are modeled as a QAP, with reduced total distance traveled by the patients when they move among these clinics.

The rest of the paper is organized as follows: Section 2 introduces the research problems; Section 3 includes related works; Section 4 lays out the research methodology; computational results are introduced in Section 5; Section 6 discusses theoretical analysis and limitation of the proposed algorithm; and Section 7 presents the conclusions.

2. Research Problems

Recently, metaheuristic algorithms have been proven successful in several fields such as technology, engineering, and science. However, most of the existing research could not achieve all the aims and objectives due to certain gaps that needed to be filled, especially for large-scale complex optimization problems. Another open area of research in these algorithms is the balance between exploration and exploitation mechanisms, premature convergence and stagnation issues, etc. [11].

The evolutionary algorithms (EAs) are one of the most important types of metaheuristics algorithms, which are very useful in solving complex optimization problems [26, 27]. It has a global exploration search, but sufferings from slow exploitation search [28]. Premature convergence and stagnation issues that occur in the iterative operation are current problems faced by all EAs [29]. In the same context, the DE algorithm is a robust EA. It has a good convergence feature, which makes it necessary to solve global optimization problems, in addition to its high efficiency that has proven to be successful in various real-world applications [29, 30]. The DE algorithm was used in [23, 25] to solve problems related to discrete values such as the QAP. DDE is a modified version of the DE algorithm. Finding solutions of the QAP is very difficult within a polynomial time as the size of the problem increases. Besides, there is no guarantee that a near-optimal solution would be found within polynomial time. This can be regarded as the problem associated with

allocating a set of facilities to a set of locations and considering the distance between any two locations as well as the flows between any two facilities to minimize the cost [16].

The QAP is as an NP-hard problem [5]. An NP-hard problem is very complex, and it requires a method that can be used to simplify it. Regarding the applications of the QAP in the real world, the increasing interest of governments in the service sectors (such as hospitals) and educational institutions (such as universities) has led to an increase in the number of these buildings. These buildings are considered suitable for the application of the QAP model, which in turn has led to an increase in the number of these buildings. In the same context, the cost of building hospitals and universities is quite high, so renovating them is often a better option as it is less expensive [8].

In conclusion, there are two main problems worth to be highlighted in this proposed study.

- (i) In the view of the fundamental technique, the EAs have a global exploration advantage; however, these kinds of algorithms have various well-known limitations. Suffering from the mechanism of exploitation is among these limitations [30]. Based on a critical reading of the literature, we found that this issue has not been studied in the DDE algorithm. As such, for a DDE algorithm to achieve good performance in terms of solving complex optimization problems, the QAP is considered. The use of local research can enhance the exploitation mechanism by increasing the speed of convergence to optimal solutions [29, 31]. Therefore, there is a need to integrate the DDE algorithm with another algorithm that uses the local search feature.
- (ii) In the view of application domain of the QAP, the lack of layout of the clinics' locations inside the hospital causes considerable distance for patients [32]. Therefore, it is important for clinics within a hospital to be meticulously organized because disorganization can result in too much movement for patients, thereby leading to waste of time.

3. Related Works

We have mentioned that there are two classes of approaches presented to solve the QAP. Since we are going to use metaheuristic, we are presenting a brief review of the metaheuristic approaches for the QAP. We carried out studies to identify better algorithms to find optimal solutions for the QAP. Some of these studies suggest that some algorithms may be improved using parallel approaches [33–36], while other studies suggest some algorithms based on the hybrid approaches [37–39], which have proven its superiority over other types of algorithms because it has addressed the issues found in other algorithms by using their advantages.

The study [40] has been presented a hybrid algorithm between the memetic algorithm (MA) and tabu search (TS) algorithm that was used to improve the local improvement strategy. The MA uses the concept of regular “restarts” of a population. A restart mechanism is employed in times when population diversity is low; in this case, the TS algorithm is applied. The results have shown the performance of the proposed algorithm competitively with some of the state-of-the-art algorithms for the QAP from the literature. The usage of TS algorithm has increased the accuracy of the solutions obtained for QAP problems.

Another study [41] proposed hybrid algorithm between biogeography-based optimization (BBO) algorithm and tabu search (TS) algorithm to overcome the weakness of the classical BBO algorithm in the mutation stage by replacing a mutation operator with a tabu search procedure. The ability to find the best solutions for 36 instances out of a total of 37 instances from QAP data was demonstrated by the hybrid proposed.

Recently, in the study [8] an algorithm is proposed by integrating the whale algorithm (WA) with the tabu search (TS) algorithm to solve the QAP. Since the WA suffers from a slow exploitation mechanism, so this integration is proposed to deal with this issue. According to the results, the proposed algorithm has obtained near-optimal results in an acceptable time, is well-suited for QAP, and outperforms the current algorithms in the literature when solving QAP. Furthermore, this study also aimed to collect hospital departments that have been modeled as a QAP model to reduce the average distance traveled by patients when moving between these departments. The results show that the performance of WAITS is better than the other algorithms that have a comparison with it, the reason is due to the improved local search using TS.

In the paper written by [42], discrete particle swarm optimization (DPSO) algorithm was modified to enable it to solve the QAP. The PSO is an efficient tool for solving combinatorial optimization problems. In the proposed algorithm, the authors made efforts to solve five sets of QAPs, and the results show slight deviations from the best-known solutions.

On the other hand, many studies recommend a comprehensive survey of metaheuristic algorithms; though these algorithms have been used successfully in various fields, some lacunae still exist in some of these algorithms, and further research is needed to resolve this [9]. For this purpose, this study aims to address some issues that are the DDE algorithm suffers from it which modified to solve QAP

by the studies [23, 25]. The following two subsections have presented the critical analysis of relevant literature studies to identify the main weaknesses of these studies and the research’s conceptual framework to identify the direction of this work.

3.1. Critical Analysis of Relevant Literature Studies [23, 25].

The main aim of constructive criticism is to analyze previous studies. This activity involves analyzing the strengths and weaknesses of a given study using a wide range of available frameworks and methods. Such frameworks and methods have been proposed to identify research materials (including theses and articles), the subject of the research, and the purpose of the study. The literature reviewed in this study has been constructively criticized. Table 1 shows the critical analysis of relevant literature studies.

3.2. Research Conceptual Framework. The metaheuristics approach has been divided into two groups: single-based metaheuristic and population-based metaheuristic algorithms. The advantage of the single-based metaheuristic is its local exploitation, whereas the population-based metaheuristic has global exploration and local exploitation. Our conceptual research framework has been presented in Figure 2.

On the other hand, this study has been selected by the DDE algorithm that belongs to the category of EAs from a population-based metaheuristic algorithm and the TS algorithm that belongs to the category of single-based metaheuristic algorithms and has been proved successful in integrating with other algorithm processes [39, 41]. The hybrid algorithm by combining the DDE that has global exploration and the TS algorithm that has local exploitation has been proposed to balance between the exploration mechanism and the exploitation mechanism.

4. Research Methodology

The research methodology in this study has been covered by five scenarios. Figure 3 shows these scenarios.

4.1. Proposed Hybrid Algorithm. This section proposes a hybrid algorithm, named HDETS, by combining the DDE and TS algorithms. The basic steps of the HDETS are as follows:

- (a) Initialization: initialize population matrix $\pi = \{\pi_1, \pi_2, \pi_3, \dots, \pi_{P_s}\}$ randomly whose size is $P_s \times N_d$ where P_s is the size of population and N_d is the dimension of problem size. All population individuals should be unique. Initialize the set of solution and check the solutions stagnation $W = \text{array of } P_s \text{ with zeros and maximum wait and } ht \text{ (iteration of tabu search)}$.
- (b) Evaluate fitness: evaluate solutions to find the best solution π_{best}^{t-1} from the population π by using equation (1).

TABLE 1: Critical analysis of relevant literature studies.

Reference	Algorithm	Critical analysis
[23]	Discrete differential evolution algorithm	<p>(1) This study focused on solving discrete optimization problems using a modified differential evolution algorithm.</p> <p>(2) In this study, a restart strategy was recommended by the authors as a technique for generating solutions, rather than using crossover operators which have been used in many studies reviewed in the literature. However, the authors did not compare the result produced by the strategy with that of other techniques in which crossover operators were used.</p> <p>(3) In the study, the authors only used the tabu list which is just a component of the tabu search algorithm, which in previous studies, have demonstrated the ability to enhance the exploitation mechanism in the evolutionary algorithms.</p> <p>(4) Only QAPs of small size were focused on in this study.</p> <p>(5) Results showed that the proposed algorithm did not perform better than the max-min ant system combined with random selection and local search.</p> <p>(6) As for a direction for future work, the authors suggested the integration of the proposed method with another method such as a local search algorithm so that the efficiency of the proposed method can be improved.</p> <p>(7) This search did not take into account the effect of parameters tuning.</p>
[25]	Discrete differential evolution algorithm	<p>(1) The focus of this study was on the modification of the differential evolution algorithm which was modified to discrete DE (DEE) algorithm.</p> <p>(2) In this research, the mutation stage was improved through the inclusion of the proposed swap that uses a local search.</p> <p>(3) The method proposed in this study was applied to just a small portion of the QAP dataset.</p> <p>(4) The authors did not identify the kind of crossover which was used in the crossover stage although there is a wide range of crossover operators that have been recommended to be used together with algorithms for the purpose of solving QAP.</p> <p>(5) In this study, consideration was not given to the problems of premature convergence and stagnation.</p> <p>(6) Despite the numerous studies that have been carried out on the DDE algorithm, there are still inadequate exploitation mechanisms for it, although it has global exploration. This issue was not addressed in the study.</p> <p>(7) No method of parameter testing was used in the study.</p>

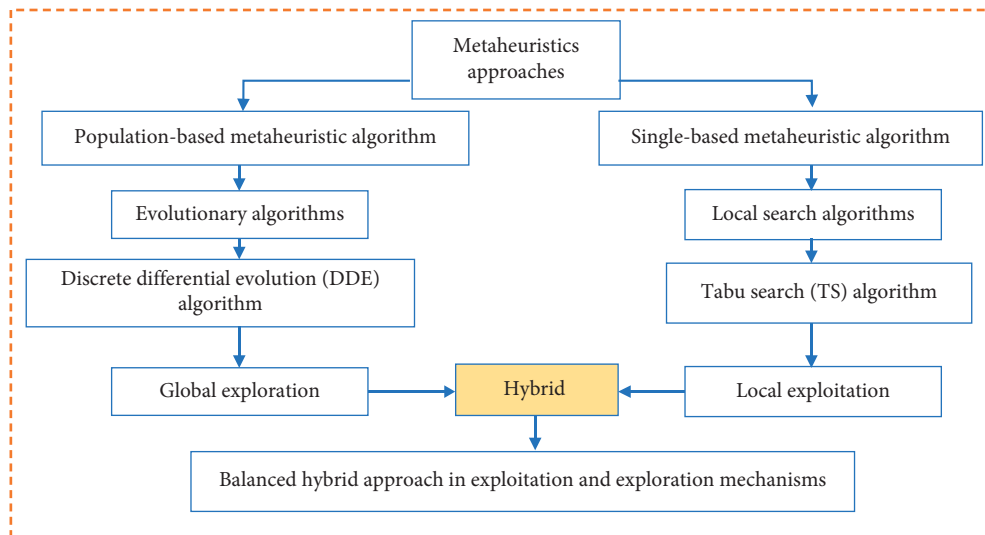


FIGURE 2: Our research conceptual framework.

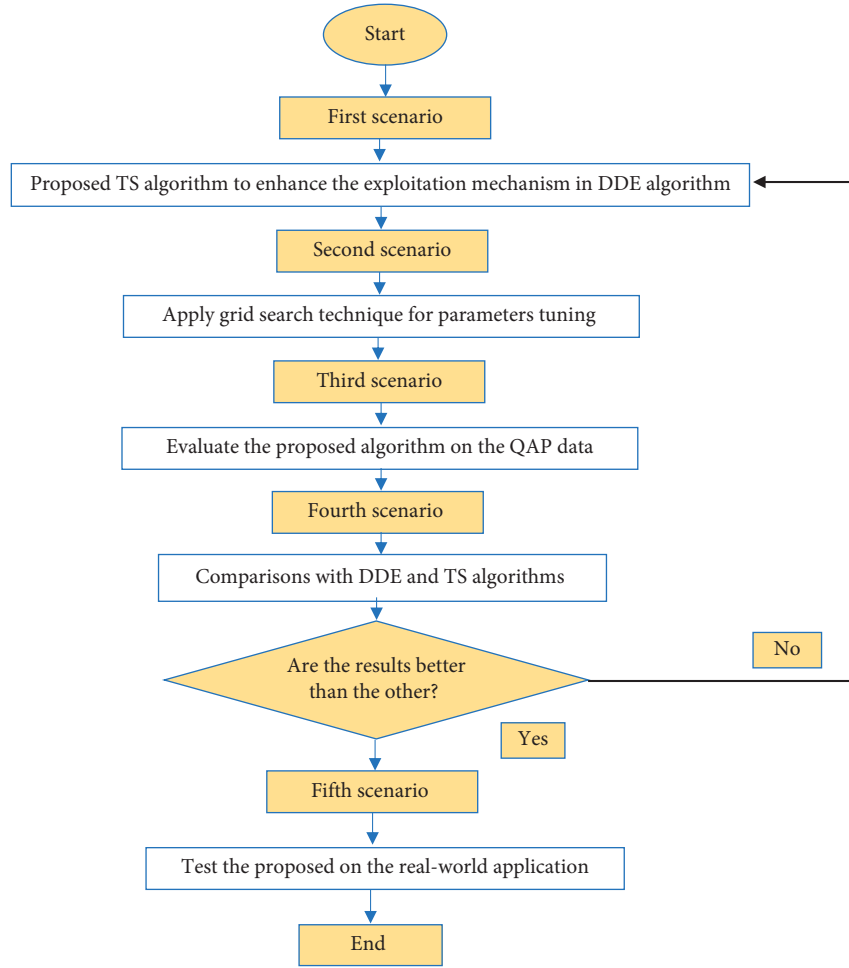


FIGURE 3: Research methodology flow.

(c) Mutation stage: the following equation shows this stage:

$$v_i^t = \begin{cases} \text{insert}(\pi_b^{t-1}), & \text{if } (r < P_m), \\ \text{swap}(\pi_b^{t-1}), & \text{otherwise.} \end{cases} \quad (2)$$

(d) Crossover stage: the type of crossover operator that was used in this stage called uniform-like crossover (ULX) was proposed by [43]. It works as follows: beginning, the similar locations in both parents are checked and then copied to the child (new solution). The second step involves selecting an item randomly and uniformly from both parents that have not yet been selected for the child after checking the unassigned locations from left to right. Finally, the rest of the items are randomly assigned to the locations. This stage is represented by the following equation:

$$u_i^t = \begin{cases} CR, & \text{if } (r < P_c), \\ v_i^t, & \text{otherwise.} \end{cases} \quad (3)$$

(e) Apply the TS for a hybrid algorithm:

- (i) Initial solution: the solution from crossover stage is the initial solution in TS.
- (ii) Great tabu list: the task of the tabu list is to avoid the swap move between the i th and j th elements in the current solution π that visited in the past to generate the neighborhood.
- (iii) Generation neighborhood: the neighborhood has been obtained from π (solution) by applying the swap to move between the i th and j th elements in the current solution π . The new solutions π_n^* are obtained by generating the neighborhoods based on the swap movement made on the current solution π . Figure 4 shows the process of generated neighborhoods.
- (iv) Evaluate neighborhood: the objective function in (1) is used to evaluate neighborhood permutation (exchanging two facilities).
- (v) Selection of best neighborhood: after evaluating the neighborhood permutations, the lowest value among them is the best permutation.
- (vi) Best candidate solution: best solution in neighborhoods and not existing in tabu list or better than best solution.

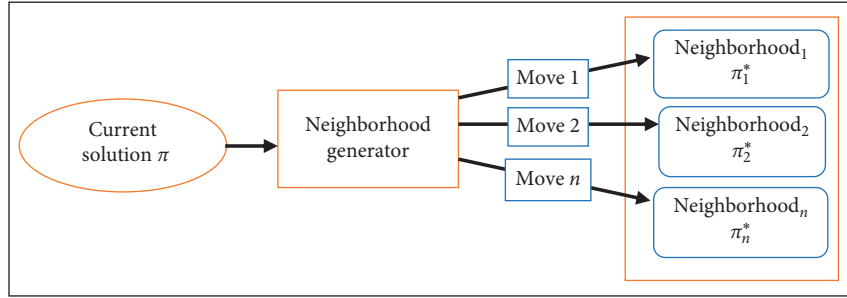


FIGURE 4: Process of generated neighborhoods [44].

(vii) Update tabu list: push the best candidate solution to the tabu list.

(f) Selection stage: the selection of the solutions depends on their values on the objective function. This stage is shown by the following equation:

$$\pi_i^t = \begin{cases} u_i^t, & \text{if } (f(u_i^t) \leq f(\pi_i^{t-1})), \\ \pi_i^{t-1}, & \text{otherwise.} \end{cases} \quad (4)$$

(g) Checking the solutions stagnation: sometimes, the algorithm is not able to generate a new solution, which is the stagnation issue. To handle this issue, the term W is suggested as a wait for improvement of the solution within a certain number of times. If there is any improvement, the solution is deleted and regenerated randomly. The following equation shows this stage:

$$W_i = \begin{cases} 0, & \pi_i^t = u_i^t, \\ W_i + 1 & \pi_i^t = \pi_i^{t-1}. \end{cases} \quad (5)$$

The pseudocode of this hybrid algorithm is presented in Algorithm 1:

The flowchart of the proposed hybrid approach HDETS is presented in Figure 5.

4.2. Parameters Tuning. The quality of the solutions obtained by using the proposed HDETS algorithm can be influenced by the set of parameters. To identify the most suitable set of parameters that produce desirable results, the grid search technique is applied. The grid search technique is a simple optimization technique based on an exhaustive search through a manually defined set of classification technique parameter space. The advantage of grid search technique is the systematic creation of the candidate parameter settings; therefore, the same candidate parameter settings will be used to test each dataset [45]. Grid search is described as follows:

(i) Consistently generate candidate parameter settings supported by a given budget threshold. For instance, a budget threshold of 5 can limit the number of candidate settings for every parameter to 5. Thus, for an absolute classifier with three parameters and a

budget threshold of five, the grid search technique generates $5 \times 5 \times 5 = 125$ mixtures of parameter settings.

(ii) Evaluate every candidate parameter setting.

(iii) Establish the optimal parameter settings.

The parameters that have been found by using grid search technique are shown in Table 2.

5. Results and Discussion

This section elucidates the efficiency of the proposed HDETS algorithm. In order to encode the proposed algorithm, MATLAB was employed and run on a PC with Intel(R) Core(TM) i7-3770 CPU @ 3.40 GHz. Additionally, the PC was used which ran under MS Windows 10 with 8 GB RAM. This section comprises two parts: the first part highlights the parameters used for the proposed algorithm, whereas the second part discusses the results of the study.

5.1. Implementations of HDETS Algorithm on QAP Instances. This section reports and discusses the results by the proposed HDETS algorithm on three types of benchmark QAP instances from QAPLIB website, namely, “Esc,” “Sko,” and “Tai.” These results include some statistical metrics such as the best-known solution (BKS) reported in QAPLIB website, best solution (BS), worst solution (WS), average solution (AS), best gap (BG), worst gap (WG), average gap (AG), standard deviation (SD), and average time (AT) over 10 runs. The following equation is used to find the percentage of gap (G):

$$G = 100 \times \frac{(BS - BKS)}{BKS}. \quad (6)$$

Table 3 reports the results of 18 “Esc” type instances obtained by the proposed hybrid HDETS algorithm. It is found from the table that the algorithm has ability to provide optimal solutions for all 18 instances in all 10 runs within a reasonable computational time. Table 4 reports the results of 13 “Sko” type instances by the HDETS algorithm. These instances are considered as a challenge to all algorithms because no heuristic algorithm could find the best-known solutions (supposed to be optimal solutions) for all instances within reasonable computational time. It is found from Table 4 that the proposed algorithm could find the optimal

```

t_max: maximum number of iterations
ht_max: maximum number of tabu search iterations
w_max: maximum number of wait for improvement of the solution
NP: number of solutions S in population
Initial Population
For t = 1 to t_max
  Find the best solution  $\pi_{best}^{t-1}$ 
  For each solution in the population
    Mutation stage
    Crossover stage
    Apply the TS for a hybrid
    Initial solution
    For ht = 1 to ht_max
      Create tabu list
      Create neighborhood
      Select the best neighbor and is not in the tabu list
      Update tabu list
    End for
  Selection stage
  Check solution stagnation W
  If keep same the solution
    w = w + 1
  Else
    w = 0
  End If
  If w > w_max
    Regenerated
    w = 0
  End If
End For
End For
    
```

ALGORITHM 1: Hybrid algorithm by combining DDE and TS algorithms.

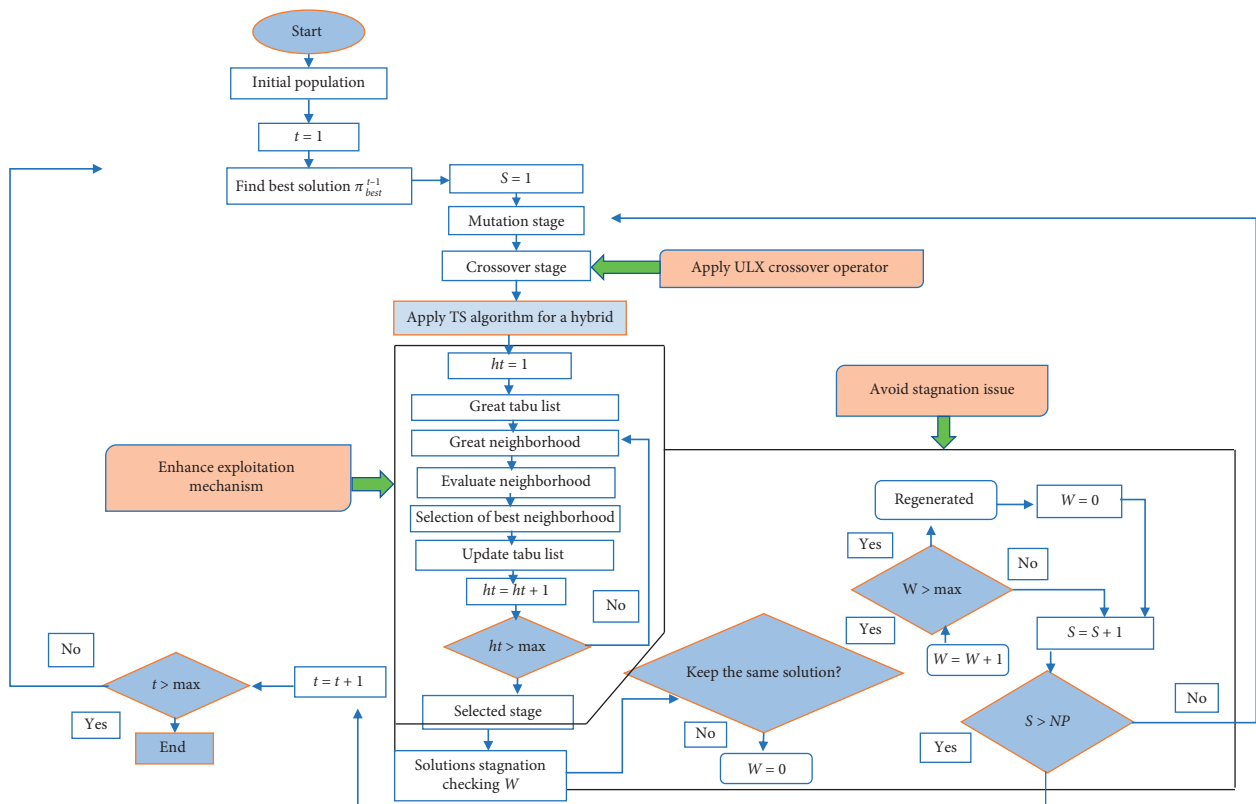


FIGURE 5: Flowchart of HDETS algorithm.

TABLE 2: Parameters tuning.

Parameter	Value
Size of population, P_s	200
Maximum iterations	300
Probability of mutation, P_m	0.7
Probability of crossover, P_c	0.8
Maximum waiting for solutions updates	10
Tabu list length	7
Maximum iterations in TS	50
Number of runs	10

TABLE 3: Results by HDETS algorithm on “Esc” type instances.

No.	Instance	BKS	HDETS algorithm							
			BS	WS	AS	BG	WG	AG	SD	AT
1	Esc16a	68	68	68	68	0	0	0	0	0.533
2	Esc16b	292	292	292	292	0	0	0	0	0.634
3	Esc16c	160	160	160	160	0	0	0	0	0.577
4	Esc16d	16	16	16	16	0	0	0	0	0.532
5	Esc16e	28	28	28	28	0	0	0	0	6.496
6	Esc16g	68	68	68	68	0	0	0	0	6.578
7	Esc16h	26	26	26	26	0	0	0	0	0.472
8	Esc16i	996	996	996	996	0	0	0	0	0.473
9	Esc16j	14	14	14	14	0	0	0	0	0.629
10	Esc32a	8	8	8	8	0	0	0	0	0.737
11	Esc32b	130	130	130	130	0	0	0	0	7.953
12	Esc32c	168	168	168	168	0	0	0	0	1.924
13	Esc32d	642	642	642	642	0	0	0	0	2.276
14	Esc32e	200	200	200	200	0	0	0	0	2.184
15	Esc32g	6	6	6	6	0	0	0	0	1.835
16	Esc32h	438	438	438	438	0	0	0	0	1.907
17	Esc64a	116	116	116	116	0	0	0	0	1.896
18	Esc128a	64	64	64	64	0	0	0	0	9.927

The boldface denote that the best solutions (BS) of these instances have been obtained through the lowest value obtained by the objective function of the QAP model during the process of repetition using our HDETS algorithm. Moreover, these solutions have achieved the best-known solution (BKS) reported in the QAPLIB dataset. Thus, obtained the values of the best gaps (BG) of the solutions of these instances are 0% according to equation (6).

TABLE 4: Results by HDETS algorithm on “Sko” type instances.

No.	Instance	BKS	HDETS algorithm							
			BS	WS	AS	BG	WG	AG	SD	AT
1	Sko42	15812	15812	15812	15812	0	0	0	0	146.959
2	Sko49	23386	23386	23402	23394	0	0.068	0.032	0.063	27.001
3	Sko56	34458	34458	34472	34461	0	0.040	0.0079	0.132	623.89
4	Sko64	48498	48498	48604	48524	0	0.218	0.052	0.241	858.975
5	Sko72	66256	66256	66422	66328	0	0.250	0.108	0.136	368.841
6	Sko81	90998	91008	91156	91042	0.068	0.578	0.346	0.18	1624.424
7	Sko90	115534	115578	115898	115766	0.192	0.834	0.443	0.197	1727.96
8	Sko100a	152002	152252	153366	152646	0.164	0.897	0.423	0.382	2969.776
9	Sko100b	153890	153890	154276	154128	0	0.250	0.154	0.189	1490.758
10	Sko100c	147862	147868	147920	147894	0.004	0.039	0.021	0.325	2930.167
11	Sko100d	149576	149666	150092	149862	0.060	0.344	0.190	0.15	1472.923
12	Sko100e	149150	149150	149742	149382	0	0.396	0.155	0.341	6488.738
13	Sko100f	149036	149070	149470	149291	0.022	0.291	0.171	0.144	1265.821

The boldface denote that the best solutions (BS) of these instances have been obtained through the lowest value obtained by the objective function of the QAP model during the process of repetition using our HDETS algorithm. Moreover, these solutions have achieved the best-known solution (BKS) reported in the QAPLIB dataset. Thus, obtained the values of the best gaps (BG) of the solutions of these instances are 0% according to equation (6).

TABLE 5: Results by HDETS algorithm on “Tai” type instances.

No.	Instance	BKS	HDETS algorithm							
			BS	WS	AS	BG	WG	AG	SD	AT
1	Tai12a	224416	224416	224416	224416	0	0	0	0	0.508
2	Tai12b	39464925	39464925	39464925	39464925	0	0	0	0	0.684
3	Tai15a	388214	388214	388214	388214	0	0	0	0	0.847
4	Tai15b	51765268	51765268	51765268	51765268	0	0	0	0	0.81
5	Tai20a	703482	703482	703482	703482	0	0	0	0	5.653
6	Tai20b	122455319	122455319	122455319	122455319	0	0	0	0	0.511
7	Tai25a	1167256	1167256	1167256	1167256	0	0	0	0	7.848
8	Tai25b	344355646	344355646	344355646	344355646	0	0	0	0	13.46
9	Tai30a	1818146	1818146	1818146	1818146	0	0	0	0	57.4
10	Tai30b	637117113	637117113	637117113	637117113	0	0	0	0	29.794
11	Tai35a	2422002	2422002	2435108	2428275	0	0.541	0.259	0.066	29.589
12	Tai35b	283315445	283315445	283315445	283315445	0	0	0	0	57.4
13	Tai40a	3139370	3141431	3151727	3148060	0.065	0.393	0.276	0.087	138.357
14	Tai40b	637250948	637250948	637250948	637250948	0	0	0	0	416.445
15	Tai50a	4938796	4965748	4991782	4981218	0.545	1.072	0.858	1.297	768.214
16	Tai50b	458821517	458821517	458821517	458821517	0	0	0	0	48.479
17	Tai60a	7205962	7259430	7321212	7296755	0.742	1.599	1.26	0.294	921.089
18	Tai60b	608215054	608215054	608215054	608215054	0	0	0	0	123.702
19	Tai64c	1855928	1855928	1855928	1855928	0	0	0	0	8.308
20	Tai80a	13499184	13616880	13678302	13654388	0.871	1.326	1.149	0.215	1195.736
21	Tai80b	818415043	818415043	818415043	818415043	0	0	0	0	1399.883
22	Tai100a	21044752	21256606	21318876	21304805	0.621	0.916	0.768	0.202	2740.755
23	Tai100b	1185996137	1187179912	1212182931	1191632007	0.099	2.208	0.475	0.624	1553.481
24	Tai150b	498896643	501892435	508173332	505261057	0.600	1.859	1.275	0.442	9402.760
25	Tai256c	44759294	44786418	44838798	44813276	0.060	0.120	0.120	0.041	41014.570

The boldface denote that the best solutions (BS) of these instances have been obtained through the lowest value obtained by the objective function of the QAP model during the process of repetition using our HDETS algorithm. Moreover, these solutions have achieved the best-known solution (BKS) reported in the QAPLIB dataset. Thus, obtained the values of the best gaps (BG) of the solutions of these instances are 0% according to equation (6).

TABLE 6: Best gap by HDETS algorithm on “Esc,” “Sko,” and “Tai” instances.

Best gap (%)	Frequency	Percentage	Cumulative percentage
0.000	42	75.0	75.0
0.004	1	1.8	76.8
0.022	1	1.8	78.6
0.060	2	3.6	82.1
0.065	1	1.8	83.9
0.068	1	1.8	85.7
0.099	1	1.8	87.5
0.164	1	1.8	89.3
0.192	1	1.8	91.1
0.545	1	1.8	92.9
0.600	1	1.8	94.6
0.621	1	1.8	96.4
0.742	1	1.8	98.2
0.871	1	1.8	100.0
Total	56	100.0	

solutions for 7 instances at least once in 10 runs. Also, the results of the remaining 6 instances are very close to optimal solutions, within a gap of less than 1% within a reasonable time.

Table 5 reports the results of 25 “Tai” type instances by our proposed algorithm. It is found that the algorithm could find the optimal solution for 16 instances at least once in 10 runs. Looking at the average solutions, the algorithm could find the optimal solution in all 10 runs for 10 instances, namely, Tai12a, Tai12b, Tai15a, Tai15b, Tai20a, Tai20b, Tai25a, Tai25b,

Tai30b, and Tai64c, while for the rest of 15 instances, percentage of average gap is found to be very small, within 1.30%.

Further, the results of the proposed HDETS algorithm on all three types of instances are discussed and analyzed statistically by using the SPSS software. Table 6 reports the results of statistical analysis of the proposed algorithm on 56 instances. The results showed that the best value is achieved for 42 of 56 instances (75%) with a 0% gap, while for the remaining 14 instances, results are very close to optimal solutions, within a gap of less than 1%.

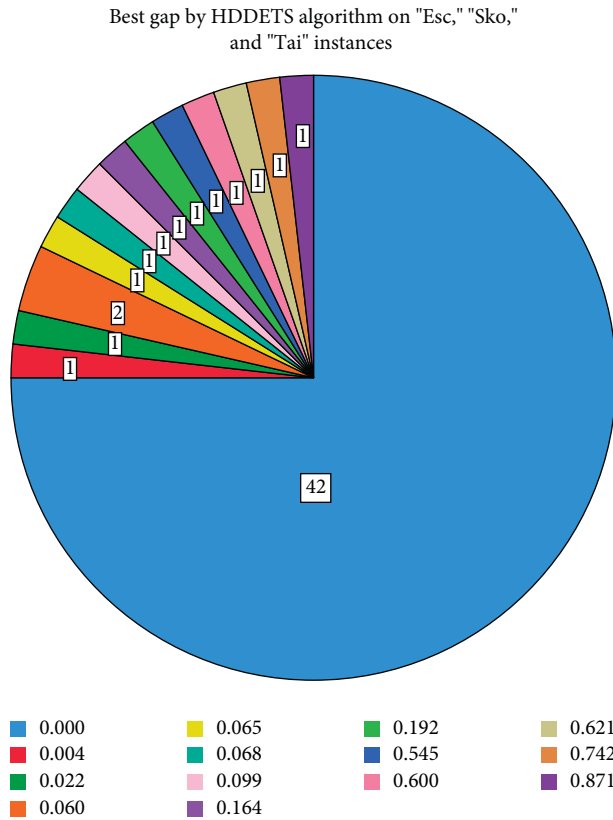


FIGURE 6: A graphical representation of the best gap in Table 6.

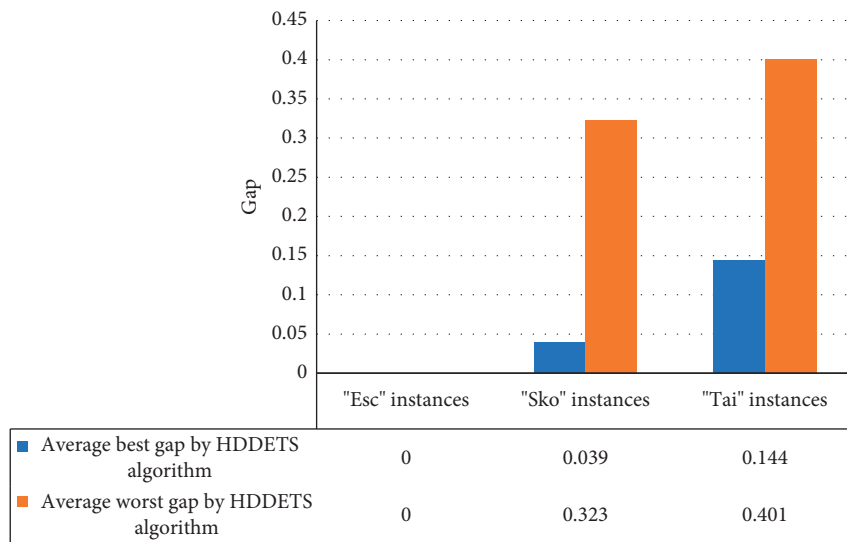


FIGURE 7: Comparison between an average best gap and average worst gap obtained by HDEETS algorithm on "Esc," "Sko," and "Tai" instances.

A graphical representation of the best gap from Table 6 has been presented in Figure 6.

Figure 7 shows the average of the best gap and the average of the worst gap of the solutions of "Esc," "Sko," and "Tai" instances using our proposed HDEETS algorithm.

Statistical analysis presented in Table 7 proved that the performance of the proposed algorithm is efficient and effective, as the mean of gaps is 0.073 for all the 56 instances and the maximum value of the gaps was observed to be 0.871. The variance of the gap is found to be 0.039, which indicates that the

TABLE 7: Statistical analysis on best gap by HDETS algorithm on “Esc,” “Sko,” and “Tai” instances.

Description	Value
No. of instances	56
Mean	0.073
Std. deviation	0.197
Variance	0.039
Range	0.871
Minimum	0.000
Maximum	0.871

TABLE 8: Comparisons on “Esc” type instances.

No.	Instance	Best gap (DDE)	Best gap (TS)	Best gap (HDETS)
1	Esc16a	0	0	0
2	Esc16b	0	0	0
3	Esc16c	0	0	0
4	Esc16d	0	0	0
5	Esc16e	0	0	0
6	Esc16g	0	0	0
7	Esc16h	0	0	0
8	Esc16i	0	15.384	0
9	Esc16j	0	14.285	0
10	Esc32a	20.000	0	0
11	Esc32b	19.047	0	0
12	Esc32c	0	0	0
13	Esc32d	0	0	0
14	Esc32e	0	0.913	0
15	Esc32g	0	0	0
16	Esc32h	0.913	0	0
17	Esc64a	0	0	0
18	Esc128a	34.375	0	0

TABLE 9: Comparisons on “Sko” instances.

No.	Instance	Best gap (DDE)	Best gap (TS)	Best gap (HDETS)
1	Sko42	2.567	2.203	0
2	Sko49	1.599	1.941	0
3	Sko56	2.704	1.967	0
4	Sko64	3.365	2.581	0
5	Sko72	3.595	3.420	0.090
6	Sko81	3.356	2.960	0.068
7	Sko90	3.661	3.368	0.192
8	Sko100a	3.326	3.018	0.206
9	Sko100b	3.184	3.082	0.18
10	Sko100c	3.907	3.872	0.193
11	Sko100d	3.866	3.403	0.124
12	Sko100e	3.886	3.297	0.244
13	Sko100f	3.616	3.016	0.454

solutions obtained are to some extent identical to the solutions when compared with the standard QAP.

5.2. Comparisons between DDE, TS, and HDETS Algorithms. This section has been covered by two scenarios. The first relates to the comparisons between the DDE, TS,

Best gap by DDE algorithm on “Esc” instances

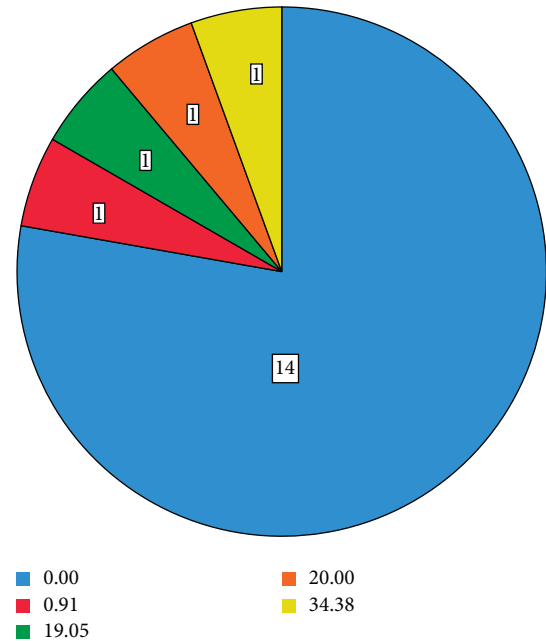


FIGURE 8: Best gap by DDE algorithm on “Esc” instances.

and HDETS algorithms, while the second presents and discusses the results statistically. The results of the comparisons between the DDE, TS, and HDETS algorithms are given in Tables 8–10 on the instances belonging to the three types (“Esc,” “Sko,” and “Tai”) of the QAP instances.

There are 18 “Esc” type instances in the QAPLIB website that have optimal solutions. The results in Table 8 show that the DDE and TS algorithms have optimal solutions for 14 and 15 instances, respectively, while the HDETS algorithm obtained optimal solutions for all the 18 instances. Figures 8–10 show graphical representations of the best gap from Table 8.

Table 11 reports statistical measures for DDE, TS, and HDETS algorithms on “Esc” type instances. According to the results reported in this table, the means of the gaps are 4.129, 1.699, and 0 by the DDE, TS, and HDETS algorithms, respectively. Variances of gaps obtained by the DDE, TS, and HDETS algorithms are 96.369, 22.918, and 0, respectively. Additionally, the maximum gaps obtained are 34.375, 15.384, and 0 using DDE, TS, and HDETS algorithms, respectively. In conclusion, performance evaluation for the proposed hybrid algorithm, HDETS, indicates that it outperforms both DDE and TS on the “Esc” type instances.

Another comparison was made among DDE, TS, and HDETS algorithms on 13 “Sko” type instances. Neither DDE nor TS could reach any best-known solution out of 13 instances, while the proposed algorithm managed to obtain the best-known solution of 4 instances. Table 9 reports these results.

Graphical representations of the best gaps reported in Table 9 are presented in Figures 11–13. Further, the results are discussed according to the statistical measures that are presented in Table 12.

The means of the gaps are obtained as 3.279, 2.932, and 0.039 by DDE, TS, and HDETS algorithms, respectively.

TABLE 10: Comparisons on “Tai” instances.

No.	Instance	Best gap (DDE)	Best gap (TS)	Best gap (HDDETS)
1	Tai12a	0	0	0
2	Tai12b	2.849	0	0
3	Tai15a	2.043	0.17	0
4	Tai15b	0.339	0	0
5	Tai20a	2.983	1.40	0
6	Tai20b	4.592	2.46	0
7	Tai25a	1.743	0	0
8	Tai25b	4.216	2.81	0
9	Tai30a	2.039	1.93	0
10	Tai30b	4.548	4.47	0
11	Tai35a	3.502	2.70	0
12	Tai35b	4.777	2.70	0
13	Tai40a	2.157	2.56	0
14	Tai40b	4.748	5.85	0.065
15	Tai50a	0.076	3.18	0
16	Tai50b	5.246	2.93	0.019
17	Tai60a	3.388	3.51	0
18	Tai60b	4.609	4.20	0.047
19	Tai64c	0.417	0.09	0
20	Tai80a	5.665	3.76	1.059
21	Tai80b	7.486	4.35	0
22	Tai100a	5.743	10.85	1.146
23	Tai100b	7.116	5.20	0.099
24	Tai150b	8.607	6.22	0.6
25	Tai256c	1.564	0.30	0.06

TABLE 11: Statistical measures for DDE, TS, and HDDETS algorithms on “Esc” instances.

Description	DDE algorithm	TS algorithm	HDDETS algorithm
No. of instances	18	18	18
Mean	4.129	1.699	0
Std. deviation	9.816	4.787	0
Variance	96.369	22.918	0
Range	34.375	15.384	0
Minimum	0	0	0
Maximum	34.375	15.384	0

Variances among the gaps are converging, and they are 0.655, 0596, and 0.066 by DDE, TS, and HDDETS algorithms, respectively. In addition, the recorded maximum gaps are 3.907, 3.872, and 0.192 derived by DDE, TS, and HDDETS algorithms, respectively. Based on the above-mentioned study, one can say that the performance of the proposed algorithm, HDDETS, is found to be better than the performance of DDE and TS algorithms on the “Sko” type instances. Further, 25 “Tai” type instances have been used for comparison among the proposed hybrid algorithm (HDDETS) and DDE and TS algorithms. Table 10 shows the results of this comparison.

From Table 10, it is found that the DDE algorithm hits the optimal solution for only one instance at least once in 10 runs, whereas TS algorithm obtained four optimal solutions. The proposed algorithm, HDDETS, could hit the optimal

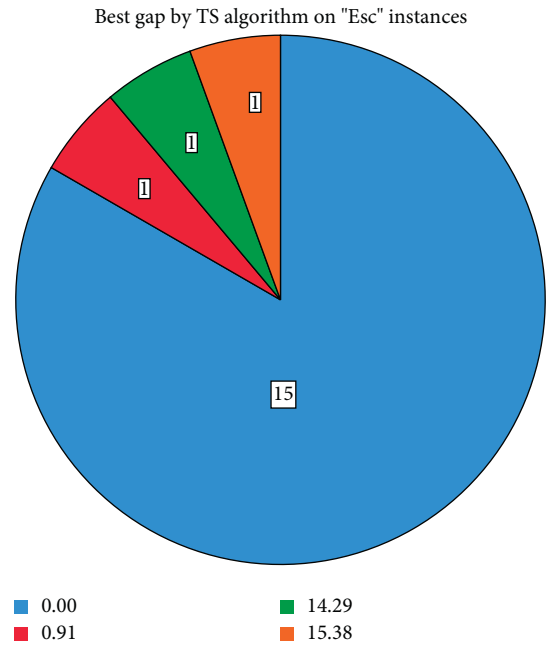


FIGURE 9: Best gap by TS algorithm on “Esc” instances.

Best gap by HDDETS algorithm on “Esc” instances

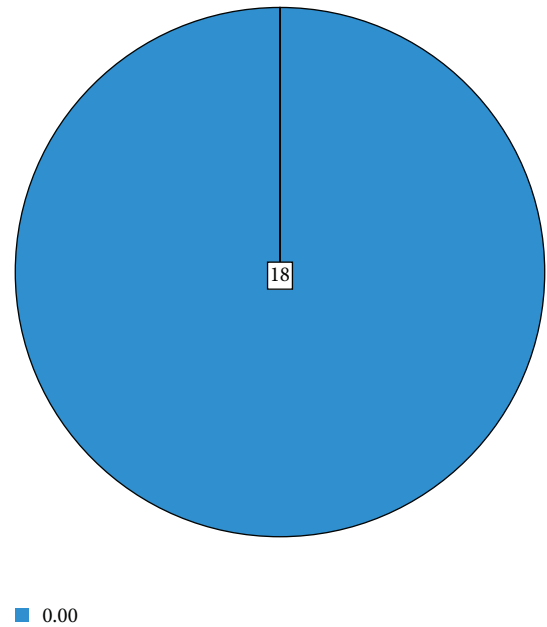


FIGURE 10: Best gap by HDDETS algorithm on “Esc” instances.

solutions for 17 instances at least once in 10 runs. For the remaining 8 instances, the gap is very small, within less than 1.15%. Figures 14–16 show graphical representations of the best gaps reported in Table 10.

Table 13 shows the statistical measures that are used to compare these algorithms for “Tai” type instances.

The means of the gaps by DDE and TS algorithms are 3.618 and 2.864, respectively. By the proposed algorithm, the mean of the best gaps is 0.144. It is worth noting that

TABLE 12: Statistical measures for DDE, TS, and HDEETS algorithms on “Sko” instances.

Description	DDE algorithm	TS algorithm	HDEETS algorithm
Instance	13	13	13
Mean	3.279	2.932	0.039
Std. deviation	0.655	0.596	0.066
Variance	0.429	0.356	0.004
Range	2.308	1.931	0.192
Minimum	1.599	1.941	0.00
Maximum	3.907	3.872	0.192

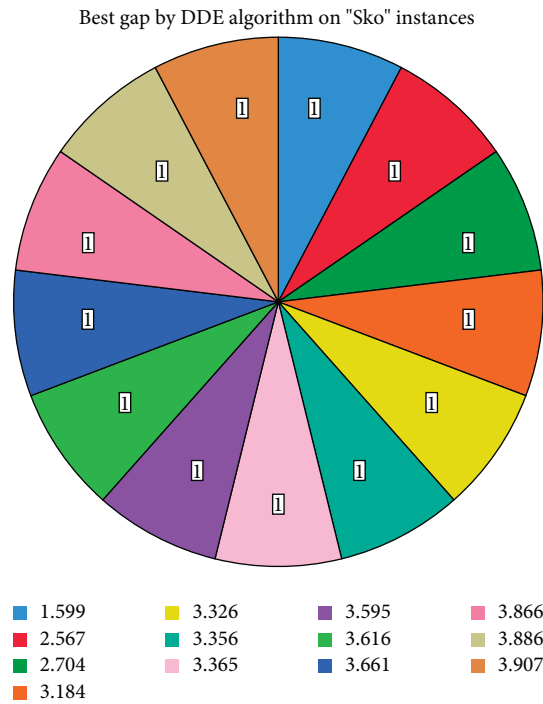


FIGURE 11: Best gap by DDE algorithm on “Sko” instances.

the variance among the gaps is 2.343 by the DDE algorithm, while the variance by the TS algorithm is 3.209. In the same context, the HDEETS algorithm has got the best variance among the gaps (0.077). Moreover, the maximum relative gap value was 8.61%, 10.85%, and 0.87% obtained by the DDE, TS, and HDEETS algorithms, respectively.

5.3. Real-World Application. There are many studies that have proven the successful use of the QAP in real applications, because of its ability to find the best allocation of locations for the available facilities. The artificial bee colony algorithm was used in [32] which aimed at solving a QAP within the context of Azadi Hospital so that a better distribution of advisory services can be found within the hospital building. This way, the efforts required when moving patients from one advisory service to another are minimized, which in turn also reduces the total distance required for transmitting the patients. As an evaluation of the efficiency of the performance of the proposed algorithm in this research, it was applied to the data of this case study.

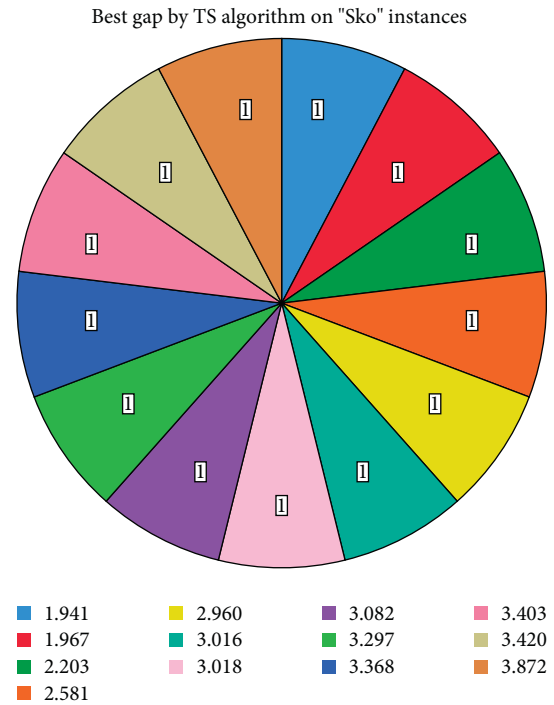


FIGURE 12: Best gap by TS algorithm on “Sko” instances.

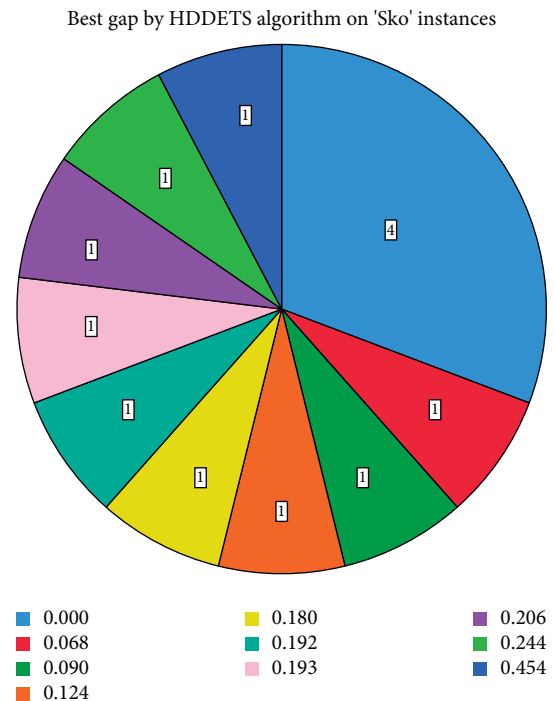


FIGURE 13: Best gap by HDEETS algorithm on “Sko” instances.

5.3.1. Data Description of the Azadi Hospital Layout Problem. The hospital layout problem aims for the distribution of departments inside the hospitals to minimize the total travel distance by patients. Azadi Hospital, which was used for this study, was founded in 1985. Recent study [32] dealt with this problem and has discussed the description of the data as follows.

TABLE 13: Statistical measures for DDE, TS, and HDEETS algorithms on ‘Tai’ instances.

Description	DDE algorithm	TS algorithm	HDEETS algorithm
Instance	25	25	25
Mean	3.618	2.864	0.144
Std. deviation	2.343	1.791	0.277
Variance	5.490	3.209	0.077
Range	8.61	10.85	0.87
Minimum	0.00	0.00	0.00
Maximum	8.61	10.85	0.87

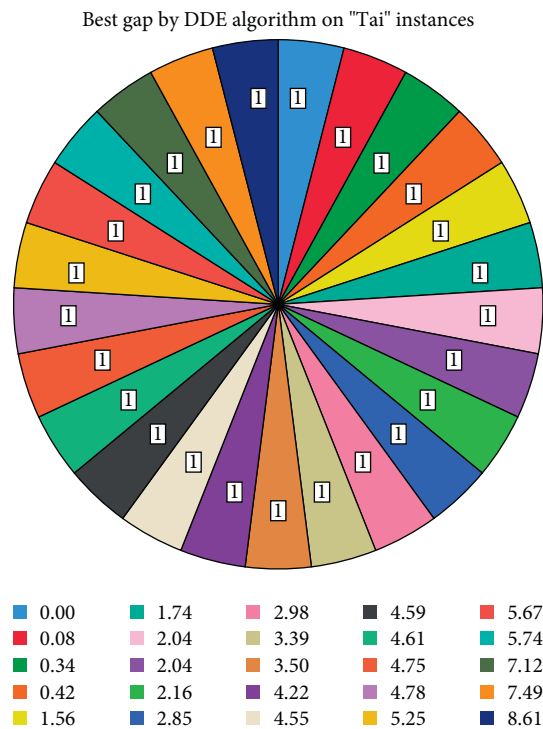


FIGURE 14: Best gap by DDE algorithm on ‘Tai’ instances.

The hospital offers a variety of quality healthcare services and is operated by the most specialized doctors with sufficient experience in the field of medicine. The hospital, which houses approximately 398 beds, is made up of 7 floors and is well-equipped with state-of-the-art facilities and equipment. In addition, the hospital is also equipped with operation theatres for minor and major procedures, an emergency room, and a variety of laboratories in which different kinds of ailments can be diagnosed. Despite the fact that the hospital is made up of different floors, sections, and units, this study only focused on 30 facilities located on the ground floor, because this floor witnesses the influx of patients on a daily basis, and for this reason, this specific floor is used for the study.

The problem was divided into three categories, the first category includes fixed consulting services, which must be installed for the lack of other similar places such as entry, laboratory, pharmacy, rays, computerized axial tomography, magnetic resonance imaging, electrocardiography,

and physical therapy. The second category represents consulting departments such as a dental department, ENT department, and ophthalmology department, while the third category represents consulting rooms such as echo, straining the heart, neurological, lung functions, ultrasound, urologist, pediatric, vaccine, general surgery, trauma room, gynecology, the internists1, the internists2, minor operations, interactions skin, dermatologic, and hematological.

In order to obtain the flow matrix entries, the flow between each pair of clinics was averaged. The paths which were taken by patients during their movement from one location to another were traced by measuring the distances between locations. Based on observation, patients are required to go and mark off their cards in the pharmacy after they had visited several clinics. It was noticed that a patient, after being through a sequence of visits to more than one clinic, must go to the pharmacy to mark off his card. Table 14 shows the distribution of clinics to rooms by using the study [32].

5.3.2. *Justifications of the Case Study.* Given the applications domain of the QAP, the lack of proper layout of the clinic’s locations inside the hospital requires patients to cover a lot of distance [32]; therefore, the clinics within a hospital need to be meticulously organized, as disorganization can result in too much movement for patients, thereby leading to wastage of time. In the hospital, the layout can be formulated as a QAP for locating the clinics within the hospital which can substantially reduce the total distance that patients travel as they move from one clinic to another in the hospital building. On the other hand, modelling the hospital’s departments on QAP minimizes the travel distance for patients [8]. This helps to

- (i) Reduce the traveling efforts of patients between departments, thus saving their time.
- (ii) Improve the service efficiency of the hospital, and
- (iii) The hospital would be capable to serve a greater number of patients daily.

5.3.3. *Location of the Study.* This study was conducted at the Azadi Hospital in Kirkuk Governorate, Iraq. It involved the distribution of thirty advisory clinics inside the hospital, based on the QAP model, and found the minimized cost through solving the QAP model by using the proposed algorithm. Figure 17 shows the locations of the case study in this study.

5.3.4. *Applying the Proposed Algorithm HDEETS on Azadi Hospital Layout Problem.* The proposed hybrid algorithm HDEETS has given a clear picture of the effective performance of the algorithm in addition to obtaining optimal solutions for some instances of QAP data with reasonable computational time, unlike exact algorithms. Moreover, the results have proven the ability of the HDEETS algorithm to find the optimal solution if the size of the problem is more

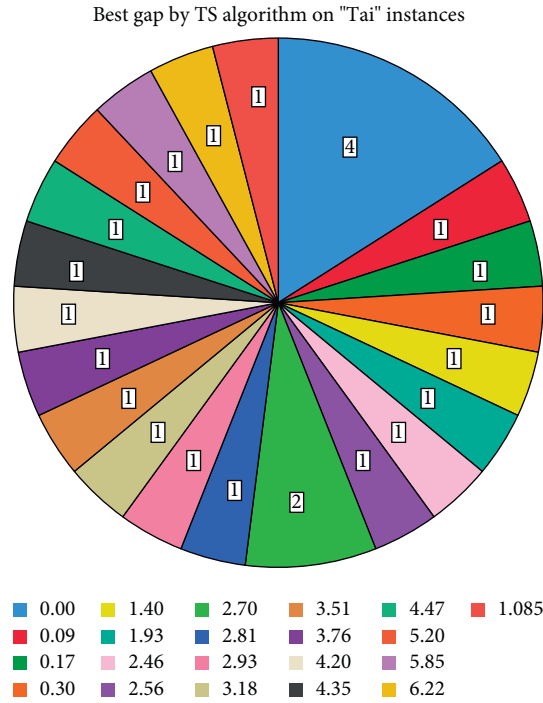


FIGURE 15: Best gap by TS algorithm on "Tai" instances.

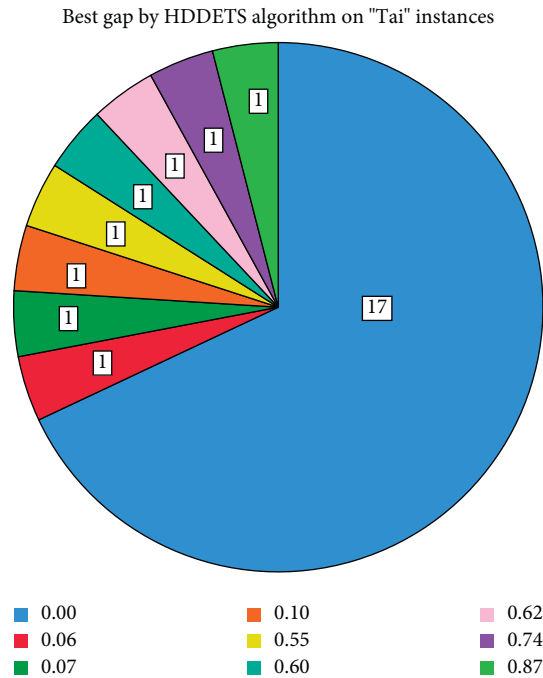


FIGURE 16: Best gap by HDEETS algorithm on "Tai" instances.

than 30 (locations/facilities), such as Tai30b, Esc32a, Esc32b, Esc32c, Esc32d, Esc32e, Esc32g, Esc32h, Esc64a, and Esc128a.

Modelling the hospital's departments on QAP will optimize the distribution of the departments within the hospital which helps to obtain a minimum total cost. On one hand, the cost of transferring patients when they move from one advisory clinic to another was 8, 974, 071 meters per month. This

TABLE 14: Distribution of the advisory clinics by [32].

Location	Facility (advisory clinic)
1	Entry
2	Pharmacy
3	Laboratory
4	Rays
5	Computerized axial
6	Magnetic resonance imaging
7	Electrocardiography
8	Physical therapy
9	Dentistry
10	Ear nose and throat
11	Ophthalmologic
12	Allergy and asthma
13	Lung functions
14	Endoscopy
15	Straining the heart
16	Neurological
17	Echo
18	Gynecology
19	Urologist
20	Dermatologic
21	Pediatric
22	Ultrasound
23	Interactions skin
24	The internists1
25	Hematological
26	Trauma room
27	The internists2
28	Minor operations
29	General surgery
30	Vaccine

cost has been reduced to 8, 312, 830 meters per month by using the study [32] based on the distribution of the advisory clinics in Table 14. The minimum cost value of the QAP problem is obtained when the optimal distribution for those facilities' locations is found. Table 15 presents the permutation of the optimal distribution of the advisory clinics inside Azadi Hospital by using the HDEETS algorithm.

The Azadi Hospital layout problem consists of 30 advisory clinics and the best cost result of transferring patients inside the hospital was 8, 312, 830 meters per month obtained by the study [32] which has been optimizing this value to 4, 559, 262 meters per month when using the proposed HDEETS algorithm.

6. Theoretical Analysis and Limitations of the Proposed Hybrid Algorithm HDEETS

The DDE and TS algorithms used in this study are metaheuristic algorithms. The literature studies have proven that the metaheuristic algorithms are one of the best techniques for handling NP-hard problems. According to the no free lunch (NFL) theorem [46], there is no algorithm that has better performance for all problems, but in some cases, it is poor. So, we aim to develop an algorithm that has good performance for a specific problem only, but not a comprehensive solution to all problems. Therefore, proposing a

TABLE 15: New distribution of the advisory clinics.

Location	Facilities (advisory clinics)
1	Entry
2	Pharmacy
3	Laboratory
4	Rays
5	Computerized axial
6	Magnetic resonance imaging
7	Electrocardiography
8	Physical therapy
9	Dentistry
10	Trauma room
11	Echo
12	Neurological
13	Allergy and asthma
14	Hematological
15	Lung functions
16	Straining the heart
17	Interactions skin
18	Minor operations
19	Endoscopy
20	The internists 1
21	The internists 2
22	General surgery
23	Vaccine
24	Gynecology
25	Urologist
26	Ultrasound
27	Ear nose and throat
28	Dermatologic
29	Pediatric
30	Ophthalmologic

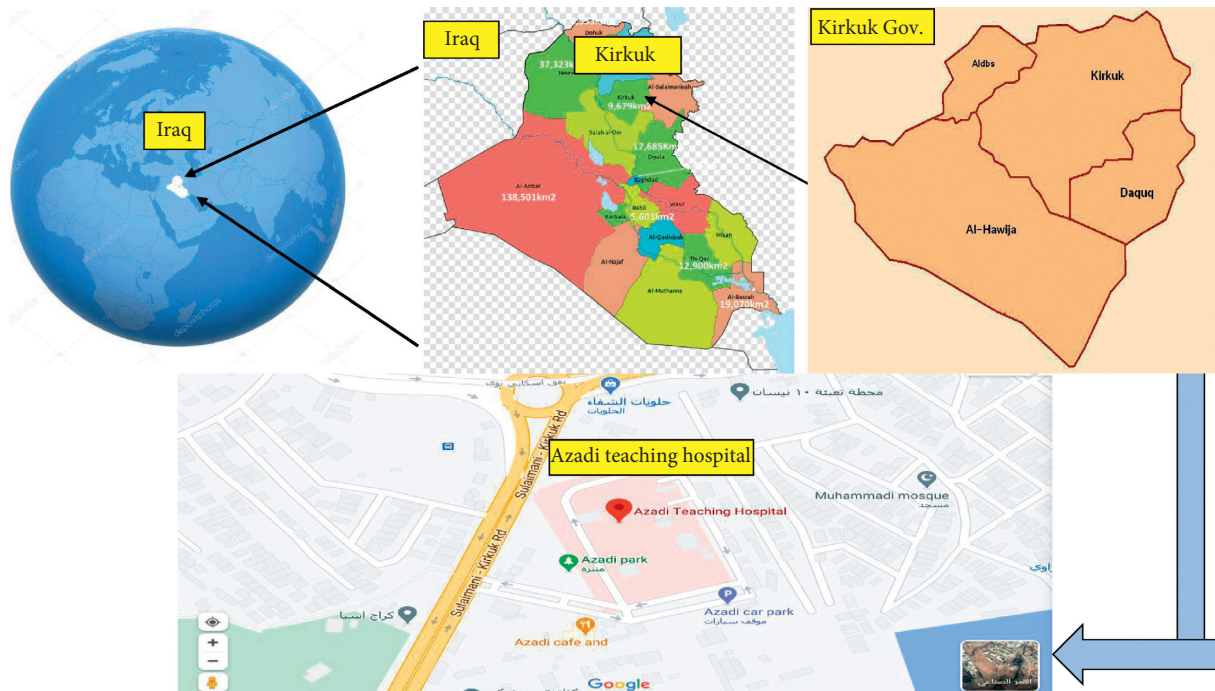


FIGURE 17: Locations of the study area, Azadi Hospital in Kirkuk Governorate, Iraq.

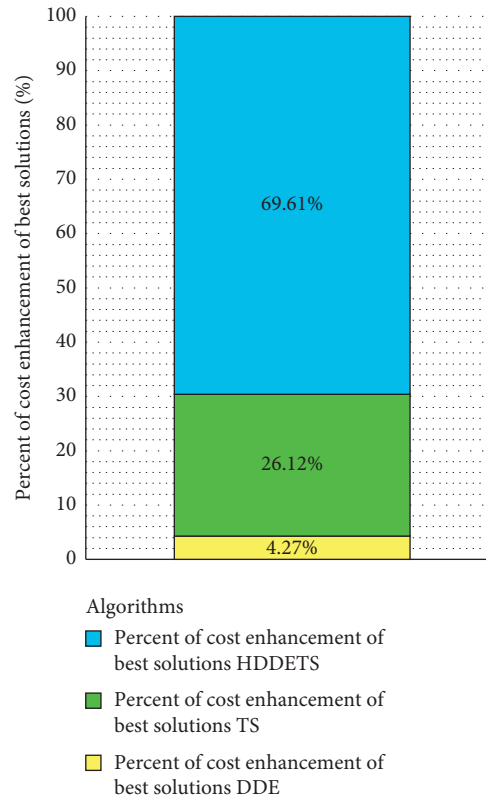


FIGURE 18: Percent of cost enhancement of best solutions by DDE, TS, and HDETS algorithms.

hybrid algorithm will increase the performance and thus increase the probability of obtaining the best results [47].

Our study addresses some of the issues that meta-algorithms face, in particular, evolutionary algorithms that are not covered in the DDE algorithm, such as the stagnations, lack of the exploitation mechanism, and parameter tuning.

Sometimes, the algorithm is not able to generate a new solution through the evolutionary process, which means it has lost its capability to improve the solutions. This issue is called stagnation, and Equation (5) has suggested for avoiding this issue, while the issue of the lack of the mechanism of exploitation in the DDE algorithm is addressed by hybridizing the algorithm with a TS algorithm that is characterized by having the feature of local exploitation based on searching in the neighborhoods of the solution in addition to the tabu list that is used to prevent visiting solutions that have been visited in the past. In this way, it prevents falling into local optimal. On the other hand, a grid search technique has been applied for parameter tuning, which is another issue in the optimization algorithms because of its prominent role in improving the performance of the algorithm.

The results obtained by the HDETS algorithm proved that the performance of the hybrid algorithm is better than the performance of both DDE and TS algorithms. The explanation of this outstanding and efficient performance has been discussed as follows: issues of stagnation and parameters tuning in addition to the lack of the mechanism of exploitation in the DDE algorithm have a negative and

highly evident impact on the performance of this algorithm, as indicated in Figure 18.

The first task of the HDETS algorithm is to generate a random population and then determine the best existing solution, thus calculating the cost of this solution by applying all stages of the algorithm. After that, we investigate the percentage of cost improvement of this solution in order to find the reasons for the difference in cost. This difference was made for three reasons. The first was related to the improvement of the solution found through the DDE algorithm part. The second reason was the improvement achieved using the TS algorithm part. The final reason of this improvement is the use of the entire HDETS algorithm.

It is noted that the percent of cost enhancement of the best solutions of the DDE algorithm part is small (4.27%) because it suffers from the abovementioned issues. The TS algorithm part is characterized by using local exploitation, by searching in the areas of the solution. This algorithm resulted in an improved cost enhancement of the best solutions (26.12%). Finally, we proposed the hybrid algorithm HDETS, using global exploration and local exploitation mechanisms that produce a more balanced algorithm. This balance is positively reflected by the increase in cost enhancement percent of best solutions (69.61%) using the entire HDETS algorithm within a reasonable time.

In general, the proposed hybrid algorithm HDETS has proven to be efficient in solving problems that have a large-scale implication which is considered a challenge for all

algorithms. However, there are still some limitations that must be addressed. This study had applied crossover operators in the stage of crossover in the DDE algorithm called uniform-like crossover (ULX) although there are other types of crossover operators such as multiple parent crossover operator (MPX) and cycle crossover (CX) that have been suggested for the QAP with other algorithms. It is difficult for one study to cover all the operators that have been proposed in the literature with other algorithms.

The time for metaheuristic algorithms to find the solutions is a reasonable time, in contrast to exact algorithms. In general, hybridization takes a longer time for some instances; for these instances, initially the solution accuracy was low, but it was increased when the iteration was increasing; there is a trade-off between the quality of solutions and their computational times. In other words, this study focused to solve single objectives related to optimization solutions of QAP within a reasonable computing time.

7. Conclusion and Discussion

The quadratic assignment problem (QAP) has attracted researchers' attention, and they continue to be interested in developing methods and techniques to find a solution for the problem. Their interest is due to the QAP's practical importance, which can be used in many real-world applications that can be modeled as a QAP. These include the layouts of hospital facilities and campuses. This study focused on proposing a hybrid algorithm based on algorithms after having critical analysis of studies and the conceptual framework.

The purpose of this process is to balance the two main components in metaheuristic approaches: exploitation and exploration. On the other hand, certain issues, such as premature convergence, stagnation, and exploitation mechanism, have not been studied in the discrete differential evolution (DDE) algorithm to solve the QAP. Therefore, we introduced an enhanced algorithm that addressed existing issues. So, we developed a new hybrid algorithm, HDETS, by combining the DDE and tabu search (TS) algorithms.

From a computational perspective, our algorithm has proven its efficiency by finding the optimal solution within a reasonable computational time. It is found that the HDETS algorithm is better than both the DDE and TS algorithms where the HDETS has obtained 42 optimal and best-known solutions from 56, while the DDE and TS algorithms have obtained 15 and 18 optimal and best-known solutions out of 56, respectively. In the application domain of the QAP, the proposed HDETS algorithm is used in Azadi Hospital in Iraq to find the best distribution of the hospital's rooms. The rooms are modeled as a QAP to reduce the total distance traveled by patients. During this study, several directions emerged that can be considered good seeds for future research. According to this study, the following research directions are promising:

- (i) Applying our hybrid metaheuristic algorithm, HDETS, to multiobjective quadratic assignment problems

- (ii) Hybridizing other local search algorithms with the DDE algorithm, such as the simulated annealing algorithm
- (iii) Solving other combinatorial optimization problems, such as the scheduling problem and the vehicle routing problem by using our hybrid metaheuristic algorithm, HDETS

Data Availability

The data used to support the findings of this study are available from the corresponding author upon request.

Conflicts of Interest

The authors declare that there are no conflicts of interest regarding the publication of this paper.

References

- [1] S. Jannat, A. A. Khaled, and S. K. Paul, "Optimal solution for multi-objective facility layout problem using genetic algorithm," in *Proceedings of the 2010 International Conference on Industrial Engineering and Operations Management*, Dhaka, Bangladesh, January 2010.
- [2] M. F. Anjos and M. V. C. Vieira, "Mathematical optimization approaches for facility layout problems: the state-of-the-art and future research directions," *European Journal of Operational Research*, vol. 261, no. 1, pp. 1–16, 2017.
- [3] V. Tongur, M. Hacibeyoglu, and E. Ulker, "Solving a big-scaled hospital facility layout problem with meta-heuristics algorithms," *Engineering Science and Technology, an International Journal*, vol. 23, no. 4, pp. 951–959, 2020.
- [4] T. C. Koopmans and M. Beckmann, "Assignment problems and the location of economic activities," *Econometrica*, vol. 25, no. 1, pp. 53–76, 1957.
- [5] S. Samanta, D. Philip, and S. Chakraborty, "A quick convergent artificial bee colony algorithm for solving quadratic assignment problems," *Computers & Industrial Engineering*, vol. 137, Article ID 106070, 2019.
- [6] A. S. Hameed, B. M. Aboobaider, N. H. Choon, M. L. Mutar, and W. H. Bilal, "Review on the methods to solve combinatorial optimization problems particularly: quadratic assignment model," *International Journal of Engineering & Technology*, vol. 7, pp. 15–20, 2018.
- [7] R. K. Bhati and A. Rasool, "Quadratic assignment problem and its relevance to the real world: a survey," *International Journal of Computer Applications*, vol. 96, no. 9, pp. 42–47, 2014.
- [8] M. Abdel-Basset, G. Manogaran, D. El-Shahat, and S. Mirjalili, "Integrating the whale algorithm with Tabu search for quadratic assignment problem: a new approach for locating hospital departments," *Applied Soft Computing*, vol. 73, pp. 530–546, 2018.
- [9] L.-S. Nurul Nadia, "Heuristics and metaheuristics approaches for facility layout problems: a survey," *Pertanika Journal Of Scholarly Research Reviews*, vol. 2, no. 3, pp. 62–76, 2016.
- [10] A. Misevicius, "An implementation of the iterated tabu search algorithm for the quadratic assignment problem," *OR Spectrum*, vol. 34, no. 3, pp. 665–690, 2012.

- [11] K. Hussain, M. N. Mohd Salleh, S. Cheng, and Y. Shi, "Metaheuristic research: a comprehensive survey," *Artificial Intelligence Review*, vol. 52, no. 4, pp. 2191–2243, 2018.
- [12] ZH. Ahmed, "A new reformulation and an exact algorithm for the quadratic assignment problem," *Indian Journal of Science and Technology*, vol. 6, no. 4, pp. 4368–4377, 2013.
- [13] A. S. Hameed, B. M. Aboobaidar, N. H. Choon, M. L. Mutar, and W. H. Bilal, "A comparative study between the branch and cut algorithm and ant colony algorithm to solve the electric meter reader problem in rural areas," *Opcion*, vol. 34, no. 86, pp. 1525–1539, 2018.
- [14] ZH. Ahmed, *Algorithms for the Quadratic Assignment Problem*, LAP LAMBERT Academic Publishing, Latvia, Mauritius, 2019.
- [15] M. Abdel-Basset, G. Manogaran, H. Rashad, and A. N. H. Zaied, "A comprehensive review of quadratic assignment problem: variants, hybrids and applications," *Journal of Ambient Intelligence and Humanized Computing*, pp. 1–24, 2018.
- [16] M. E. Riffi, Y. Saji, and M. Barkatou, "Incorporating a modified uniform crossover and 2-exchange neighborhood mechanism in a discrete bat algorithm to solve the quadratic assignment problem," *Egyptian Informatics Journal*, vol. 18, no. 3, pp. 221–232, 2017.
- [17] Z. H. Ahmed, "A simple genetic algorithm using sequential constructive crossover for the quadratic assignment problem," *Journal of Scientific & Industrial Research*, vol. 73, pp. 763–766, 2014.
- [18] D. T. Connolly, "An improved annealing scheme for the QAP," *European Journal of Operational Research*, vol. 46, no. 1, pp. 93–100, 1990.
- [19] N. Fescioglu-Unver and M. M. Kokar, "Self controlling tabu search algorithm for the quadratic assignment problem," *Computers & Industrial Engineering*, vol. 60, no. 2, pp. 310–319, 2011.
- [20] N. Ç. Demirel and M. D. Toksarı, "Optimization of the quadratic assignment problem using an ant colony algorithm," *Applied Mathematics and Computation*, vol. 183, no. 1, pp. 427–435, 2006.
- [21] Z. Drezner, "A new genetic algorithm for the quadratic assignment problem," *INFORMS Journal on Computing*, vol. 15, no. 3, pp. 320–330, 2003.
- [22] E. Duman, M. Uysal, and A. F. Alkaya, "Migrating Birds Optimization: a new metaheuristic approach and its performance on quadratic assignment problem," *Information Sciences*, vol. 217, pp. 65–77, 2012.
- [23] J.-i. Kushida, K. Oba, A. Hara, and T. Takahama, "Solving quadratic assignment problems by differential evolution," in *Proceedings of the 6th International Conference on Soft Computing and Intelligent Systems, and The 13th International Symposium on Advanced Intelligence Systems*, pp. 639–644, Kobe, Japan, November 2012.
- [24] A. W. Mohamed and A. K. Mohamed, "Adaptive guided differential evolution algorithm with novel mutation for numerical optimization," *International Journal of Machine Learning and Cybernetics*, vol. 10, no. 2, pp. 253–277, 2019.
- [25] M. F. Tasgetiren, Q.-K. Pan, P. N. Suganthan, and I. E. Dizbay, "Metaheuristic algorithms for the quadratic assignment problem," in *Proceedings of the 2013 IEEE Symposium on Computational Intelligence in Production and Logistics Systems (CIPLS)*, pp. 131–137, Singapore, April 2013.
- [26] S. Jain, S. Kumar, V. K. Sharma, and H. Sharma, "Improved differential evolution algorithm," in *Proceedings of the 2017 International Conference on Infocom Technologies and Unmanned Systems (Trends and Future Directions) (ICTUS)*, pp. 627–632, Dubai, UAE, September 2017.
- [27] S. Prabha and R. Yadav, "Differential evolution with biological-based mutation operator," *Engineering Science and Technology, an International Journal*, vol. 23, no. 2, pp. 253–263, 2020.
- [28] D. Pelusi, R. Mascella, L. Tallini, J. Nayak, B. Naik, and Y. Deng, "Improving exploration and exploitation via a hyperbolic gravitational search algorithm," *Knowledge-Based Systems*, vol. 193, Article ID 105404, 2020.
- [29] K. Zhang, P. Mu, Y. Zhang, Z. Jin, and Q. Huang, "Enhancing differential evolution algorithm with repulsive behavior," *Soft Computing*, vol. 24, no. 12, pp. 9279–9305, 2020.
- [30] M. Yang, C. Li, Z. Cai, and J. Guan, "Differential evolution with auto-enhanced population diversity," *IEEE Transactions on Cybernetics*, vol. 45, no. 2, pp. 302–315, 2015.
- [31] M. Leon, *Improving Differential Evolution with Adaptive and Local Search Methods*, Mälardalen University, Västerås, Sweden, 2019.
- [32] J. A. Sultan, D. A. Matrood, and Z. M. Khaleel, "Artificial bee colony for quadratic assignment problem: a hospital case study," *Journal of University of Human Development*, vol. 2, no. 3, pp. 502–508, 2016.
- [33] C. Sanhueza, F. Jimenez, R. Berretta, and P. Moscato, "PasMoQAP: a parallel asynchronous memetic algorithm for solving the multi-objective quadratic assignment problem," in *Proceedings of the 2017 IEEE Congress on Evolutionary Computation (CEC)*, pp. 1103–1110, IEEE, San Sebastian, Spain, June 2017.
- [34] E. Sonuc, B. Sen, and S. Bayir, "A cooperative GPU-based parallel multistart simulated annealing algorithm for quadratic assignment problem," *Engineering Science and Technology, an International Journal*, vol. 21, no. 5, pp. 843–849, 2018.
- [35] S. C. B. Semlali, M. E. Riffi, and F. Chebihi, "Parallel hybrid chicken swarm optimization for solving the quadratic assignment problem," *International Journal of Electrical and Computer Engineering (IJECE)*, vol. 9, no. 3, pp. 2064–2074, 2019.
- [36] A. Sangaiah, M. Suraki, M. Sadeghilalimi, S. Bozorgi, A. Hosseinabadi, and J. Wang, "A new meta-heuristic algorithm for solving the flexible dynamic job-shop problem with parallel machines," *Symmetry*, vol. 11, no. 2, pp. 165–217, 2019.
- [37] A. Acan and A. Ünveren, "A great deluge and tabu search hybrid with two-stage memory support for quadratic assignment problem," *Applied Soft Computing*, vol. 36, pp. 185–203, 2015.
- [38] Z. H. Ahmed and A. Alexandridis, "A hybrid algorithm combining lexisearch and genetic algorithms for the quadratic assignment problem," *Cogent Engineering*, vol. 5, no. 1, pp. 1423743–1423815, 2018.
- [39] M. A. Kaviani, M. Abbasi, B. Rahpeyma, and M. M. Yusefi, "A hybrid Tabu search-simulated annealing method to solve quadratic assignment problem," *Decision Science Letters*, vol. 3, no. 3, pp. 391–396, 2014.
- [40] M. Harris, R. Berretta, M. Inostroza-Ponta, and P. Moscato, "A memetic algorithm for the quadratic assignment problem with parallel local search," in *Proceedings of the 2015 IEEE Congress on Evolutionary Computation (CEC)*, pp. 838–845, Sendai, Japan, March 2015.
- [41] W. L. Lim, A. Wibowo, M. I. Desa, and H. Haron, "A biogeography-based optimization algorithm hybridized with tabu search for the quadratic assignment problem,"

- Computational Intelligence and Neuroscience*, vol. 2016, Article ID 5803893, , 2016.
- [42] T. G. Pradeepmon, R. Sridharan, and V. V. Panicker, "Development of modified discrete particle swarm optimization algorithm for quadratic assignment problems," *International Journal of Industrial Engineering Computations*, vol. 9, pp. 491–508, 2018.
- [43] D. M. Tate and A. E. Smith, "A genetic approach to the quadratic assignment problem," *Computers & Operations Research*, vol. 22, no. 1, pp. 73–83, 1995.
- [44] G. Zäpfel, R. Braune, and M. Bögl, *Metaheuristic Search Concepts: A Tutorial with Applications to Production and Logistics*, Springer, Berlin, Germany, 2010.
- [45] C. Tantithamthavorn, S. McIntosh, A. E. Hassan, and K. Matsumoto, "The impact of automated parameter optimization on defect prediction models," *IEEE Transactions on Software Engineering*, vol. 45, no. 7, pp. 683–711, 2019.
- [46] W. G. Wolpert, D. H. Wolpert, and Macready, "No free Lunch theorems for optimization," in *Proceedings of the 10th Annual Conference Genetic and Evolutionary Computation*, pp. 811–818, Atlanta, Georgia, July 2008.
- [47] T. Dokeroglu, E. Sevinc, and A. Cosar, "Artificial bee colony optimization for the quadratic assignment problem," *Applied Soft Computing*, vol. 76, pp. 595–606, 2019.