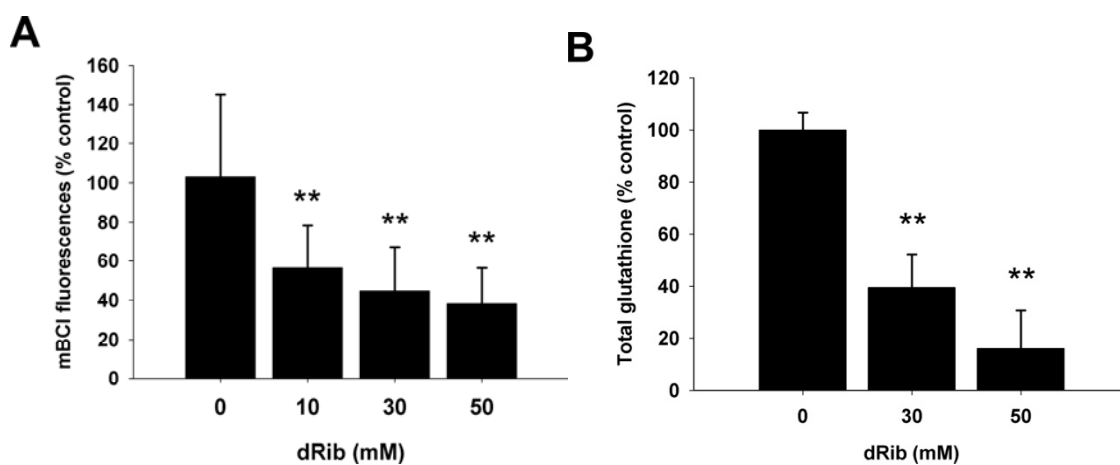


## SUPPLEMENTARY FIGURE



Supplementary Fig. 1. Changes in intracellular reduced (A) and total (B) glutathione in response to various concentrations of dRib. The productions of reduced and total glutathione were studied by measuring mBCL fluorescence (A) and by an enzymatic recycling method using glutathione reductase (B), respectively. Experimental conditions were as described in the MATERIALS AND METHODS. These experiments were performed twice in quadruplicate. \*\* $P < 0.01$  vs. 0 mM dRib group evaluated by one-way ANOVA with Duncan's *post hoc* test.