

Table S1

	30 weeks Control	30 weeks HFD	38 weeks HFD	
	untreated	untreated	Vehicle-treated	MSC-treated
Body weight (g)	27.2 ± 4.6	46.7 ± 3.5*	52 ± 2.8*	50.8 ± 3*
Plasma insulin (µg/l)	0.6 ± 0.1	4.3 ± 2.4*	8.2 ± 2.8*	6.9 ± 2.5*
Blood glucose (mg/dl)	121 ± 22	171 ± 13*	185 ± 18*	177 ± 12*
Serum cholesterol (mg/dl)	80 ± 15	222 ± 20*	230 ± 39*	225 ± 21*
Serum triglycerides (mg/dl)	74 ± 18	105 ± 24*	112 ± 22*	110 ± 18*

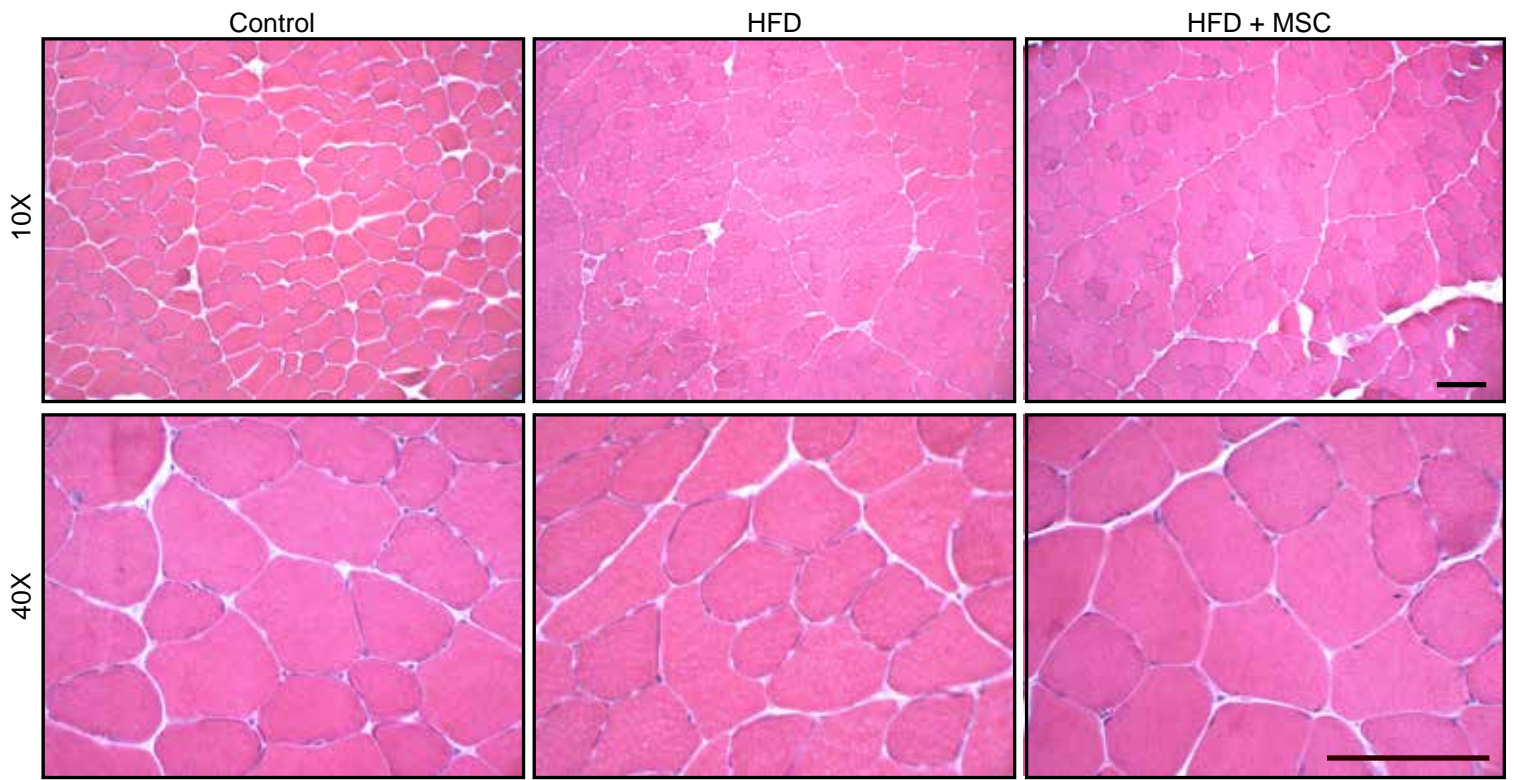
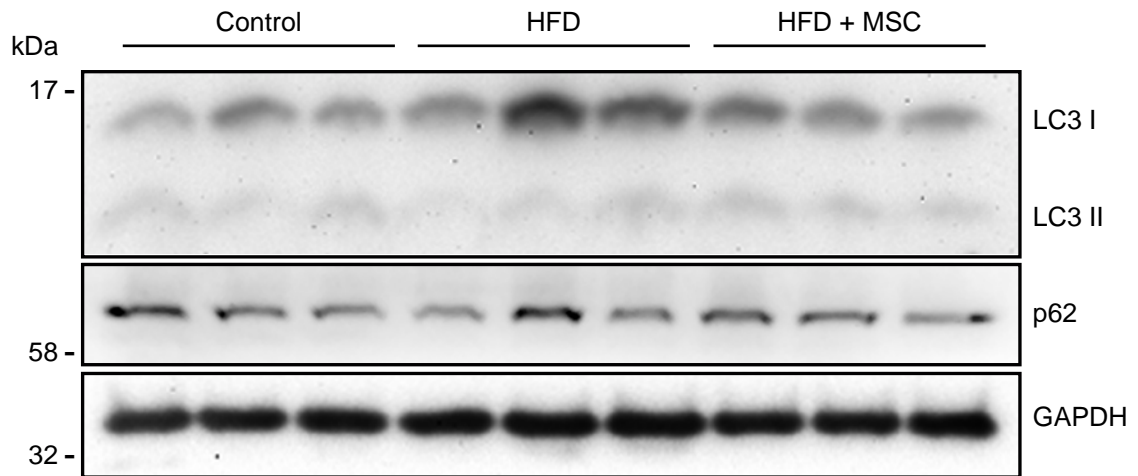
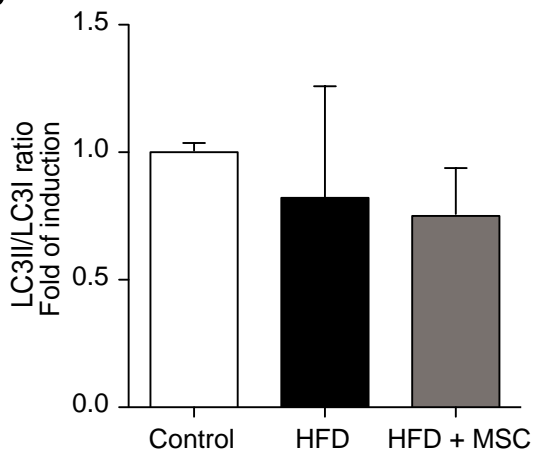
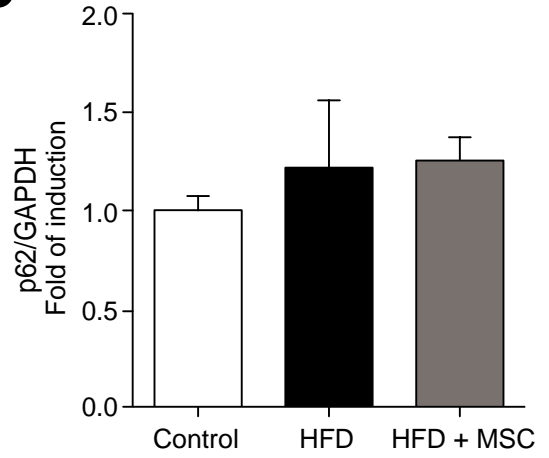


Fig. S1

A**B****C****Fig. S2**