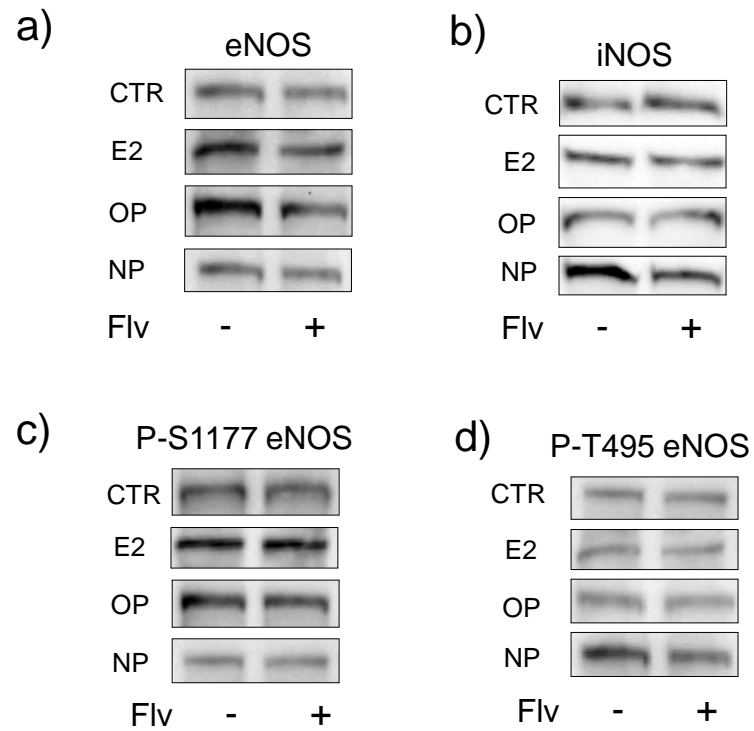


**Supplementary Fig 1. RT-PCR analysis of the time-dependent mRNA expression of selected genes in response to OP and NP.** a) endothelial Nitric Oxide Synthase (eNOS), b) inducible Nitric Oxide Synthase (iNOS), c) manganese superoxide dismutase and d) cytochrome *c*. Cells were incubated for 12h and 24h with octylphenol (OP) 10  $\mu$ M and nonylphenol 20  $\mu$ M (NP). Relative expression was calculated *versus* untreated, control cells, after  $\beta$ -actin normalization.



**Supplementary Fig. 2:** typical western blot pattern as detected using antibodies against: a) eNOS, b) iNOS, c) P-S1177 eNOS and d) P-T495 eNOS (details in materials and methods).