

SUPPLEMENTARY MATERIALS

General, 21-day postoperative rehabilitation program has beneficial effect on oxidative stress markers in patients after total hip or knee replacement

Bronisława Skrzep-Poloczek,¹ Jakub Poloczek,² Elżbieta Chelmecka,³ Wojciech Kazura,¹ Agnieszka Dulcka,⁴ Maciej Idzik,⁵ Jerzy Jochem,¹ and Dominika Stygar¹

¹ Department of Physiology, Faculty of Medical Sciences in Zabrze, Jordana Street 19, 41-808 Zabrze, Medical University of Silesia, Katowice, Poland.

² Department of Rehabilitation, 3rd Specialist Hospital in Rybnik, Energetyków 46 Street, 44-200 Rybnik, Poland.

³ Department of Statistics, Department of Instrumental Analysis, Faculty of Pharmaceutical Sciences in Sosnowiec, Ostrogórska 31 Street, 41-200 Sosnowiec, Medical University of Silesia, Katowice, Poland.

⁴ Department of Pregnancy Pathology, Department of Woman's Health, School of Health Sciences in Katowice, Stefana Batorego 18, 41-902, Bytom, Medical University of Silesia, Katowice, Poland.

⁵ Independent Public Health Care, Opole Cancer Center prof. Tadeusz Koszarowski, Katowicka 45-061 Street, 46-020, Opole, Poland.

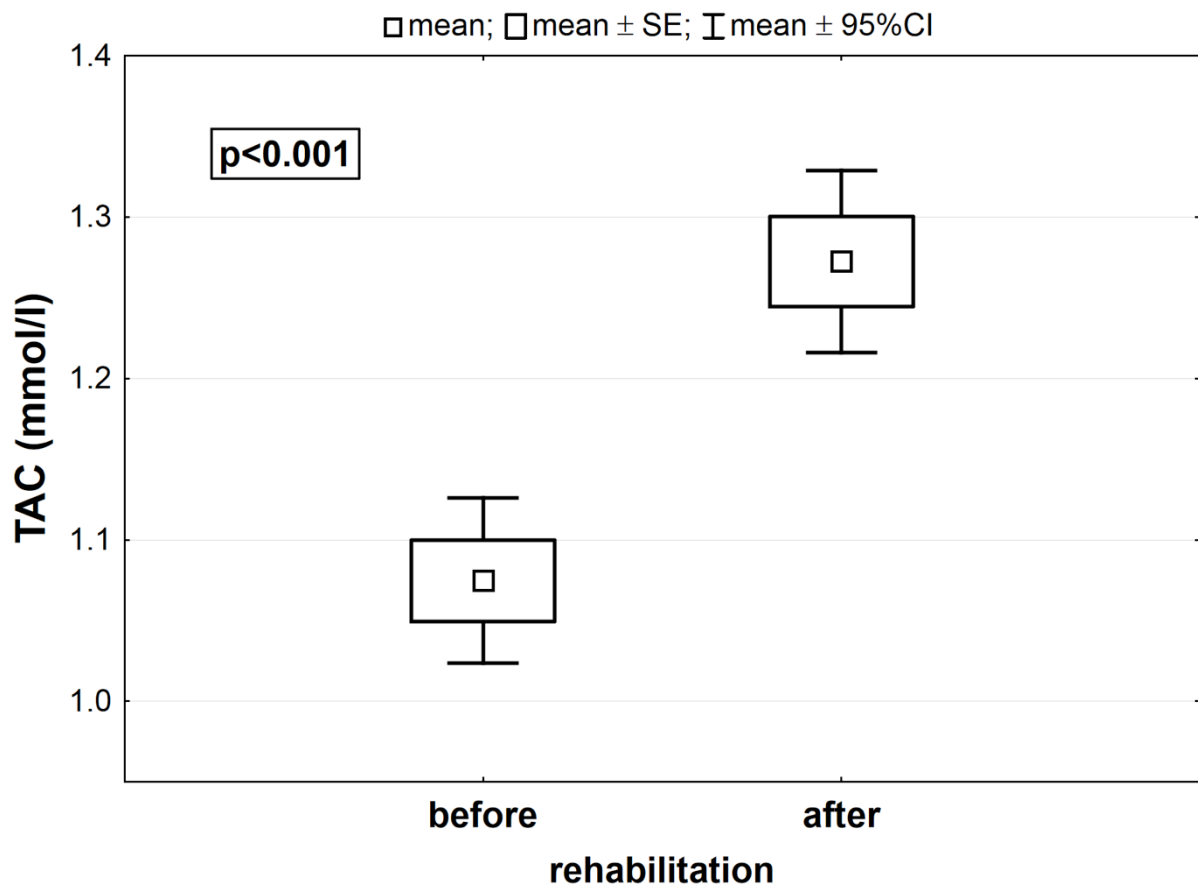


Figure S1. Total antioxidant capacity (TAC) (mmol/l) in the serum of patients (n =36) with hip or knee endoprosthesis before and after a 21-day general rehabilitation program. Symbols used in the plot: inner box – mean value, outer box – mean value \pm standard error, whiskers – mean value \pm confidence interval.

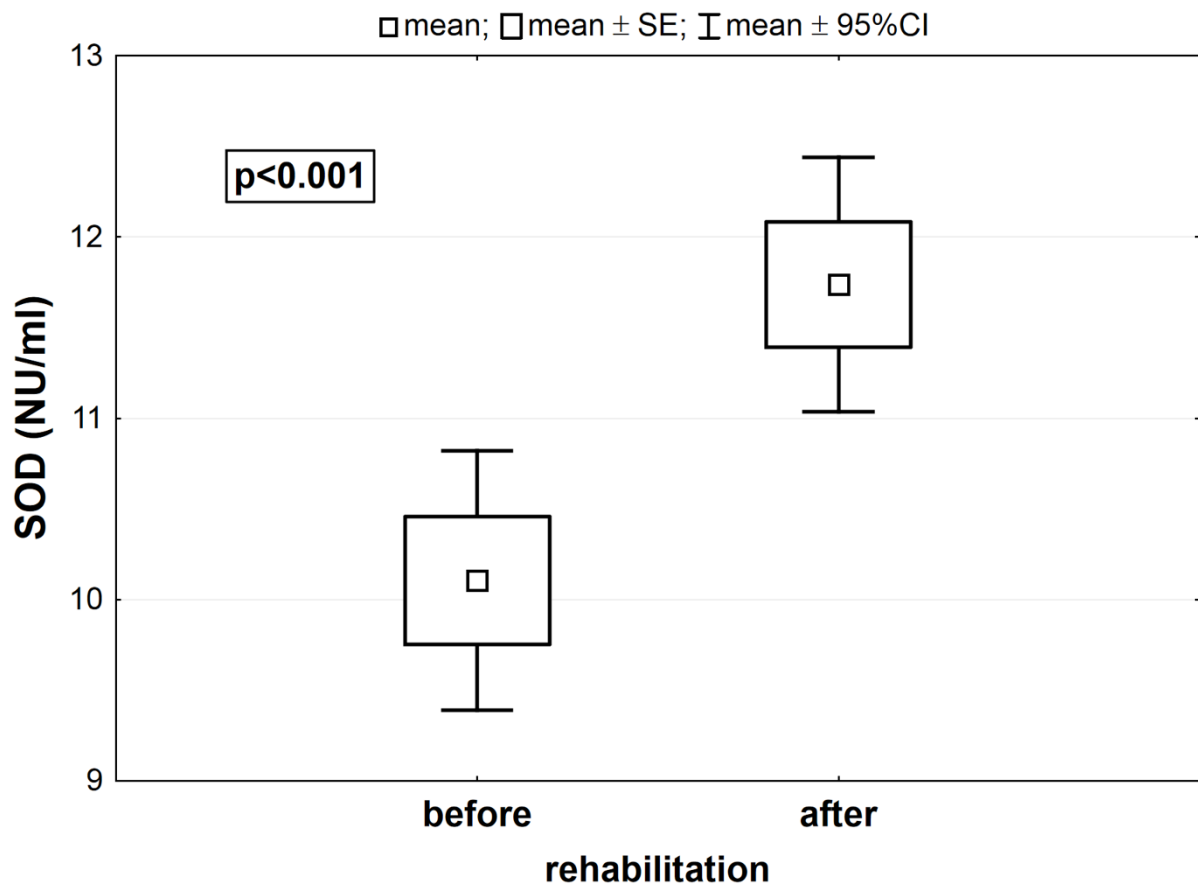


Figure S2. Total superoxide dismutase (SOD) activity (NU/ml) in the serum of patients (n = 36) with hip or knee endoprosthesis before and after a 21-day general rehabilitation program. Symbols used in the plot: inner box – mean value, outer box – mean value ± standard error, whiskers – mean value ± confidence interval.

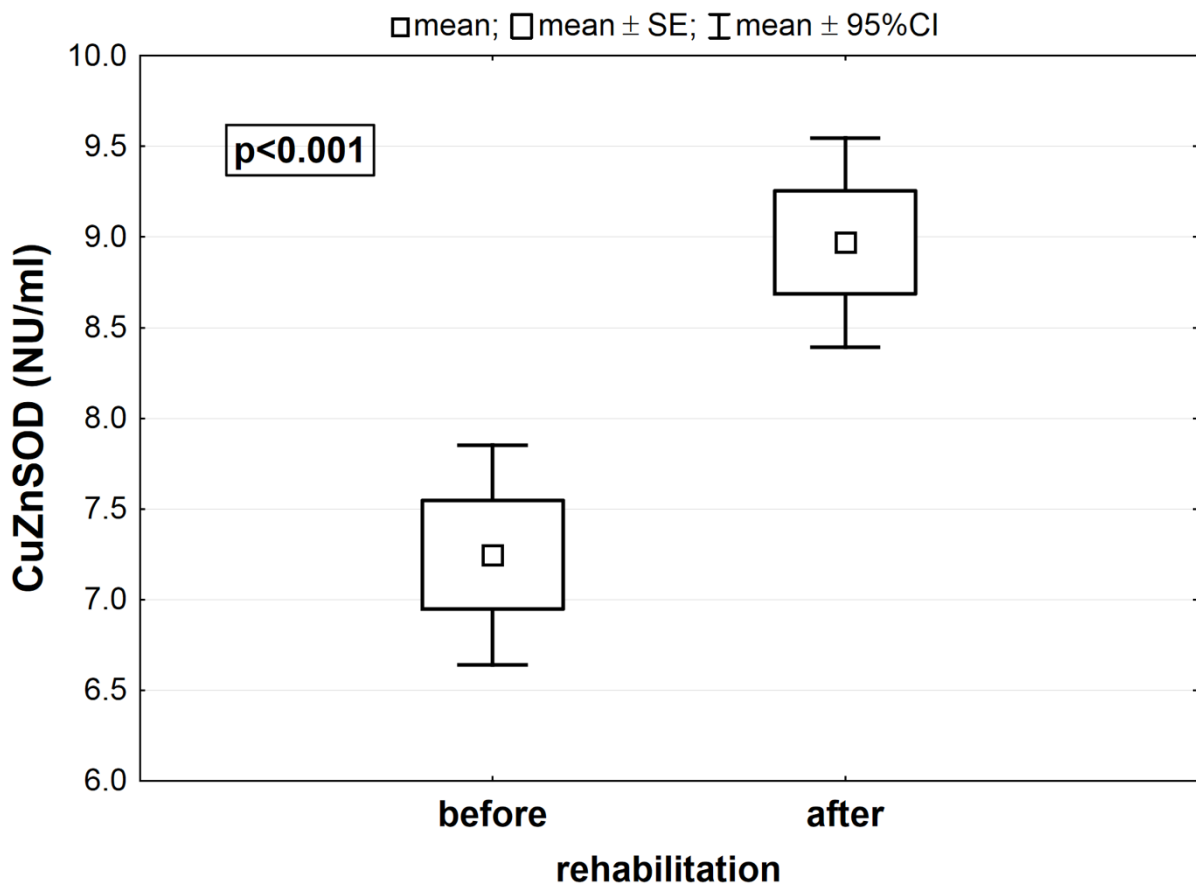


Figure S3. Cu-Zn superoxide dismutase (CuZnSOD) activity (NU/ml) in the serum of patients (n = 36) with hip or knee endoprosthesis before and after a 21-day general rehabilitation program. Symbols used in the plot: inner box – mean value, outer box – mean value ± standard error, whiskers – mean value ± confidence interval.

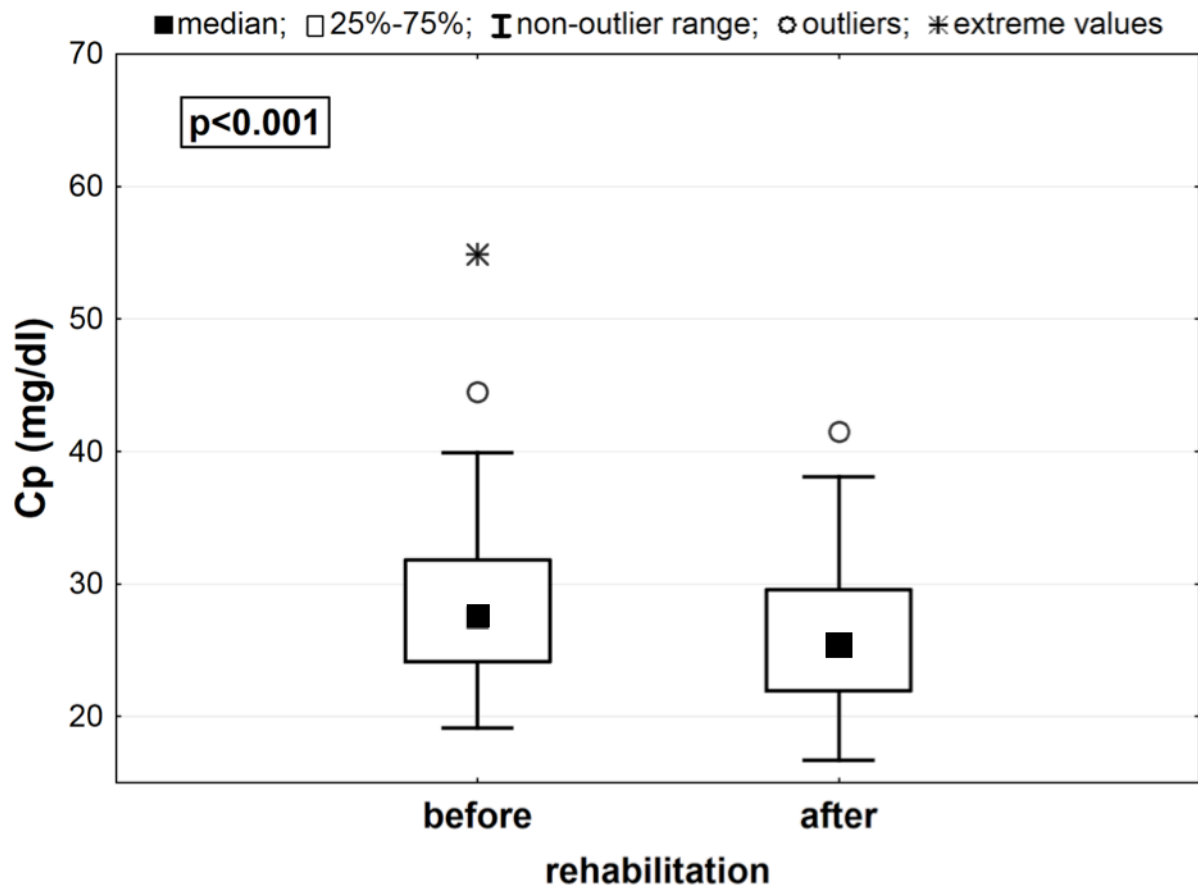


Figure S4. Ceruloplasmin (Cp) concentration (mg/ml) in the serum of patients (n = 36) with hip or knee endoprosthesis before and after a 21-day general rehabilitation program. Symbols used in the plot: inner box – median value, outer box – first quartile – third quartile, whiskers – non-outlier range, circle – outliers, * – extreme values.

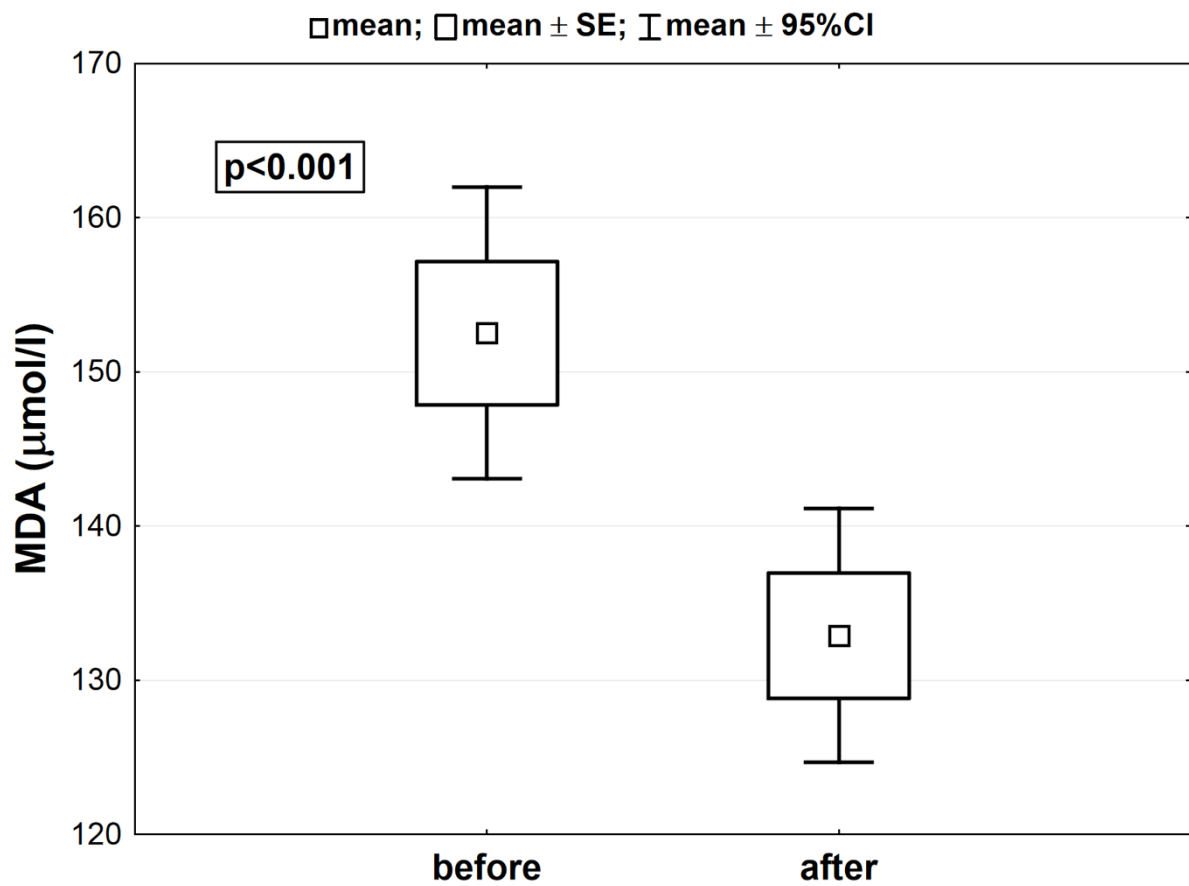


Figure S5. Malondialdehyde (MDA) concentration ($\mu\text{mol/l}$) in the serum of patients ($n = 36$) with hip or knee endoprosthesis before and after a 21-day general rehabilitation program. Symbols used in the plot: inner box – mean value, outer box – mean value \pm standard error, whiskers – mean value \pm confidence interval.

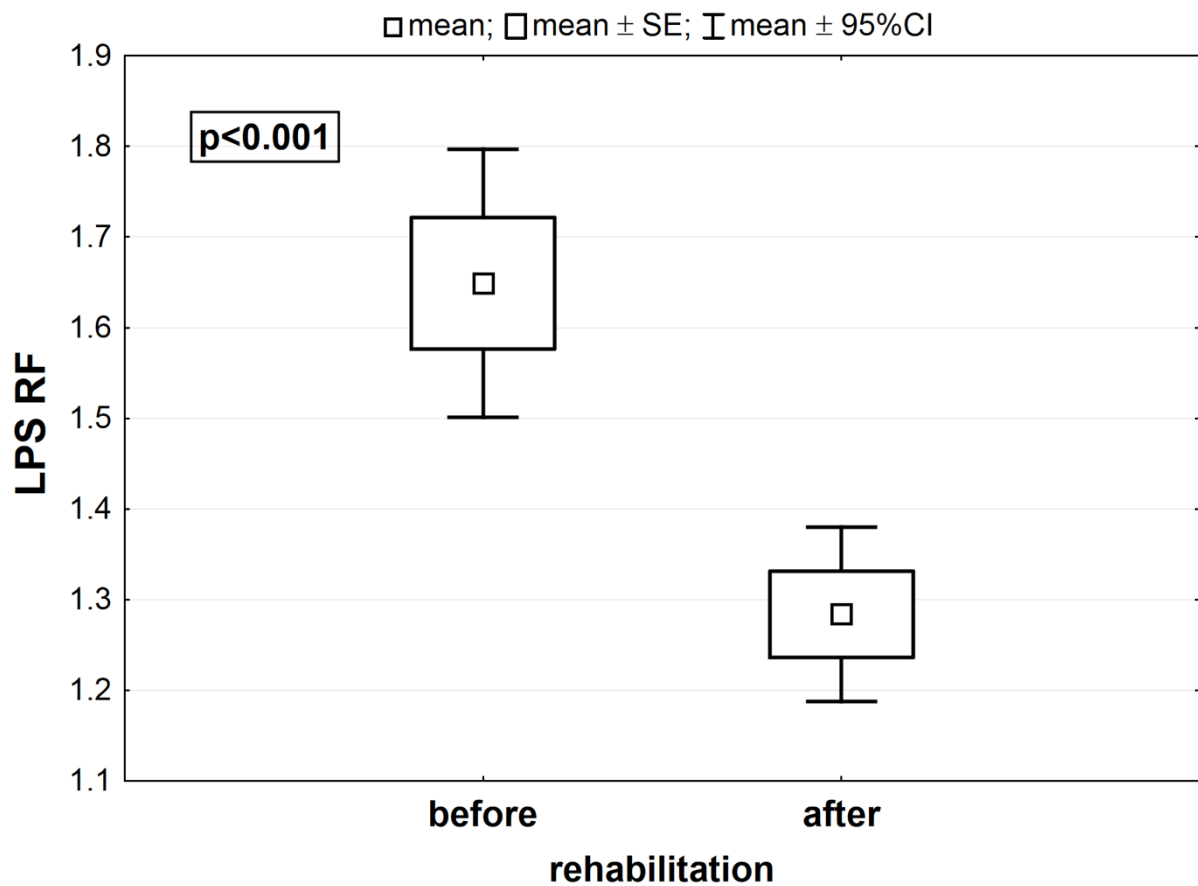


Figure S6. Lipofuscin (LPS) concentration (RF) in the serum of patients (n = 36) with hip or knee ednoprosthesis before and after a 21-day general rehabilitation program. Abbreviations: RF – radiofrequency. Symbols used in the plot: inner box – mean value, outer box – mean value ± standard error, whiskers – mean value ± confidence interval.