

Fig S1: Summary of monoculture and co-culture

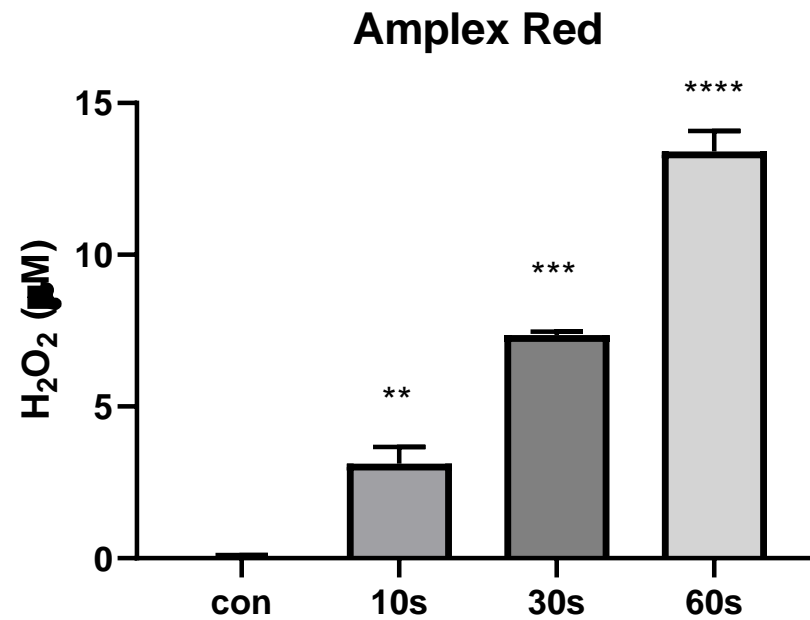
Monoculture	GM Fbs	HaCaT	Time of the assay	Plate type
In vitro scratch assay	$6 \times 10^4$	$6 \times 10^4$	24 hr	96 well Image lock plate
In vitro scratch assay (HaCaT monoculture stimulated with CTGF, Cyr61 or GM Fb CM)	-	$4 \times 10^4$	24hr	96 well Image lock plate
Metabolic Activity assay	$2.1 \times 10^4$	$2.1 \times 10^4$	3hr, 24hr	96 well plate
Harvest of GM Fb CM	$0.1 \times 10^6$	-	18hr	24 well plate

Co-culture	GM Fbs	HaCaT	Time of the assay	Plate type
In vitro scratch assay	$2 \times 10^4$	$4 \times 10^4$	24 hr	96 well Image lock plate
Metabolic Activity assay	$0.7 \times 10^4$	$1.4 \times 10^4$	3hr, 24hr	96 well plate

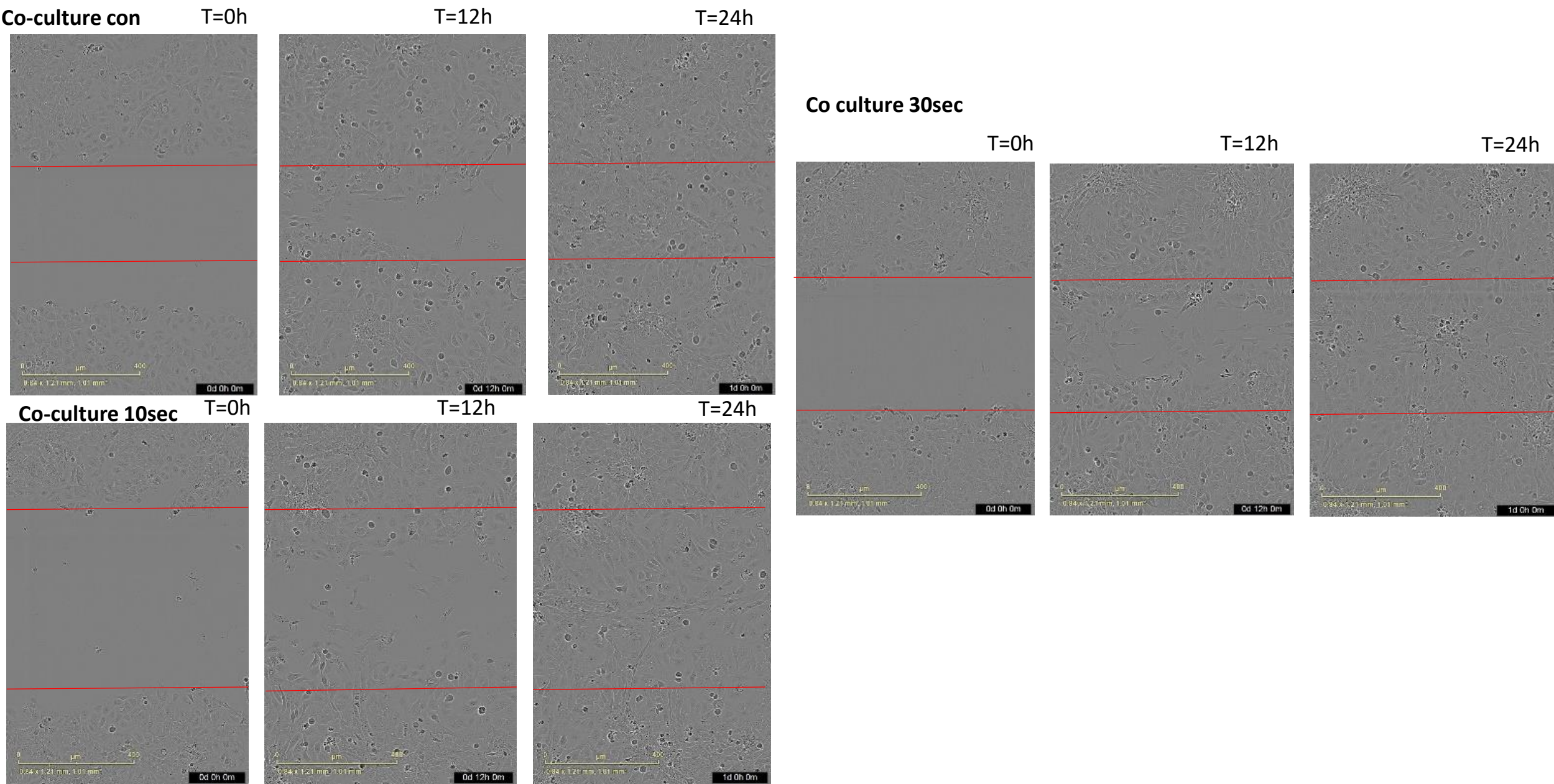
FigS2: Forward and reverse primer sequences used in Real time PCR for YAP, Cyr61 and CTGF

YAP fwd	TAGCCCTGCGTAGCCAGTTA
YAP rev	TCATGCTTAGTCCACTGTCTGT
Cyr61 fwd	GGTCAAAGTTACCGGGCAGT
Cyr61 rev	GGAGGCATCGAATCCCAGC
CTGF fwd	CAGCATGGACGTTTCGTCTG
CTGF rev	AACCACGGTTTGGTCCTTGG

Fig S3: Amplex Red assay to monitor  $\text{H}_2\text{O}_2$  production

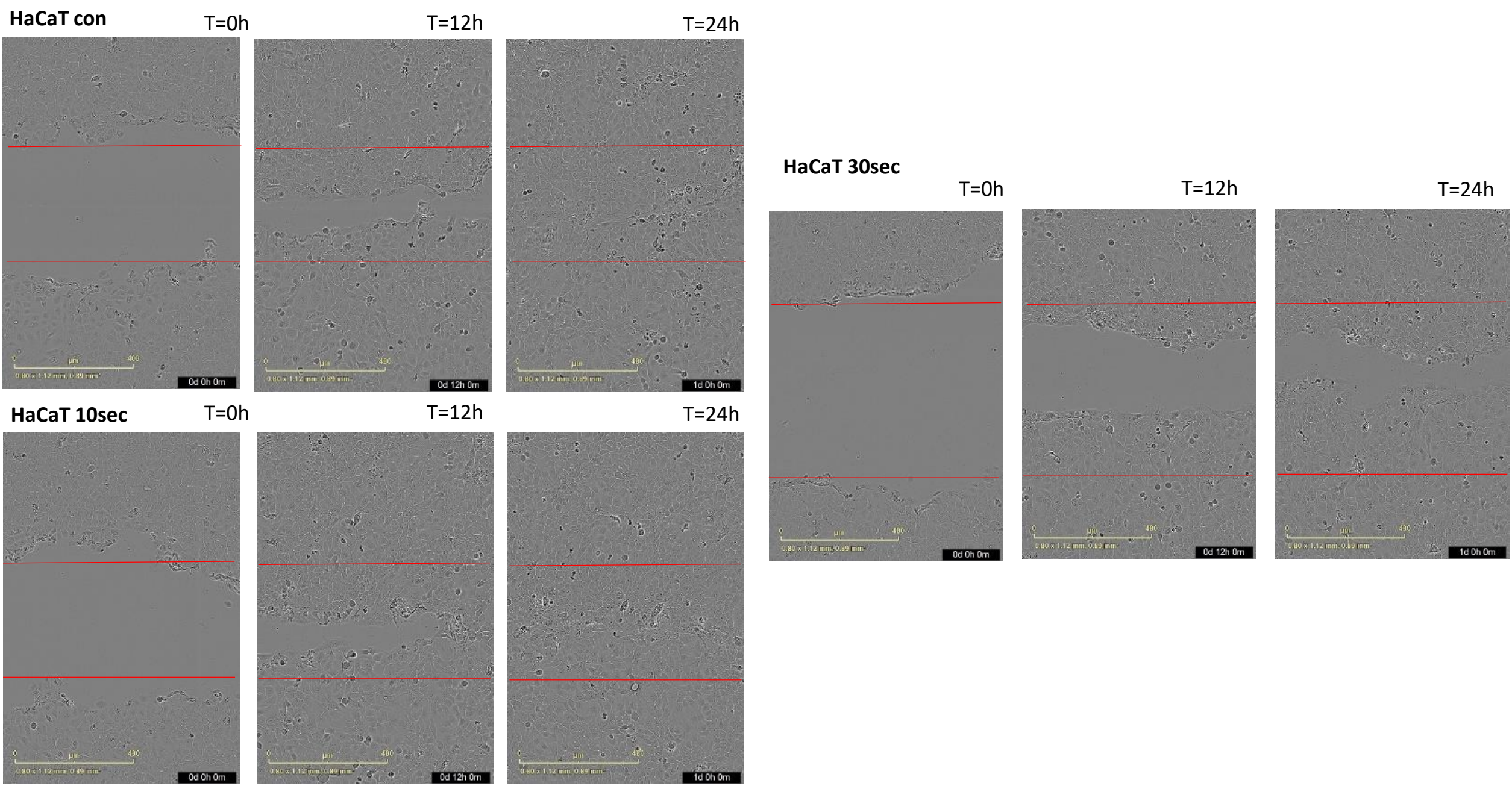


FigS4: Wound healing images at times 0, 12 and 24 hour in untreated and CAP treated co-culture





FigS5: Wound healing images at times 0, 12 and 24 hour in untreated and CAP treated HaCaT cells

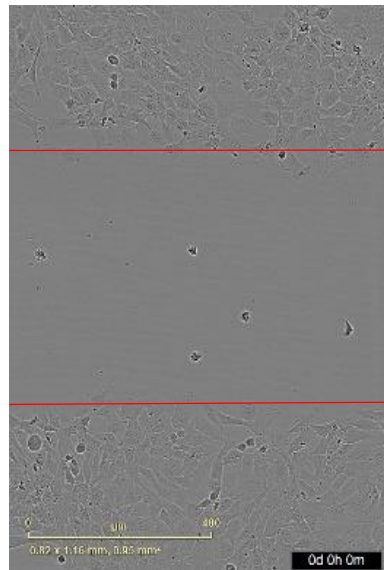




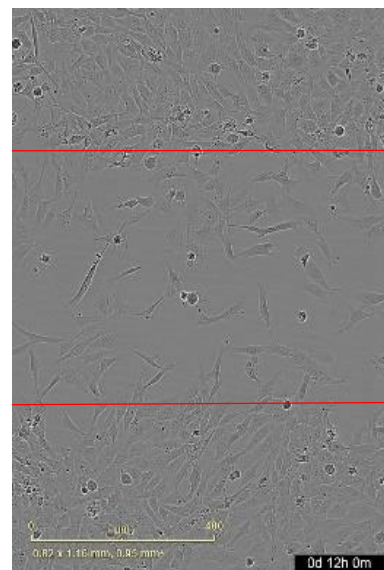
FigS6: Wound healing images at times 0, 12 and 24 hour in untreated and CAP treated GM Fbs

GM Fb con

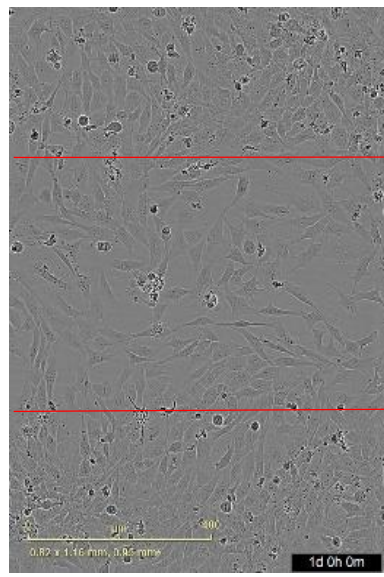
T=0h



T=12h

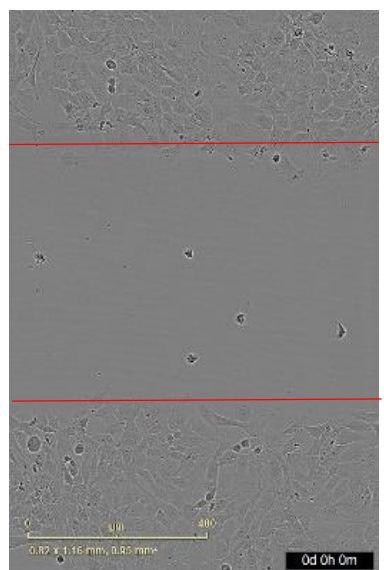


T=24h

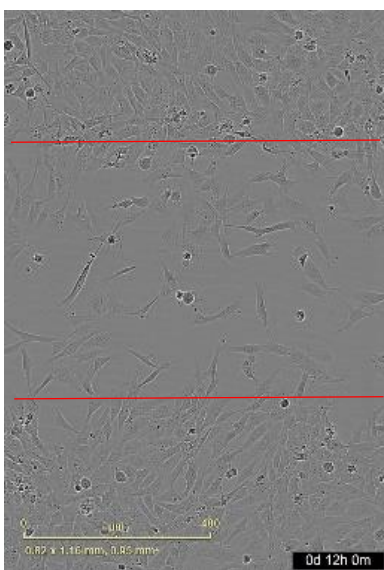


GM Fb 10sec

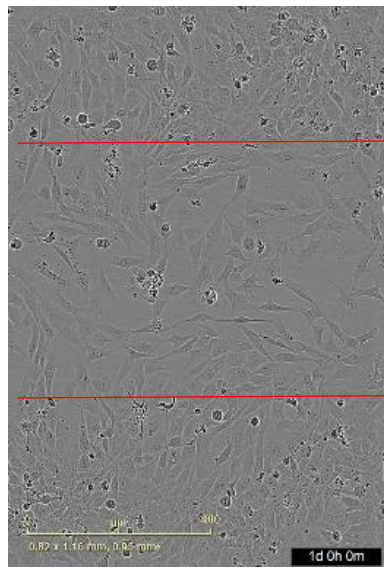
T=0h



T=12h

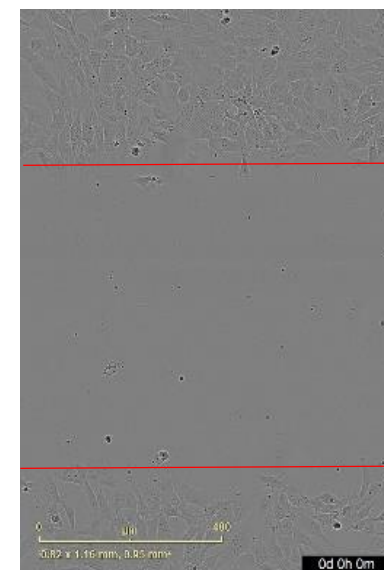


T=24h

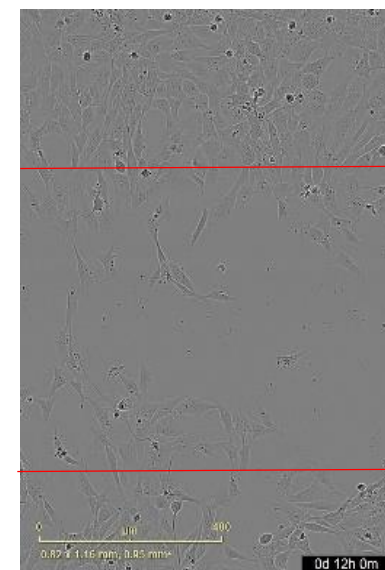


GM Fb 30sec

T=0h



T=12h



T=24h

