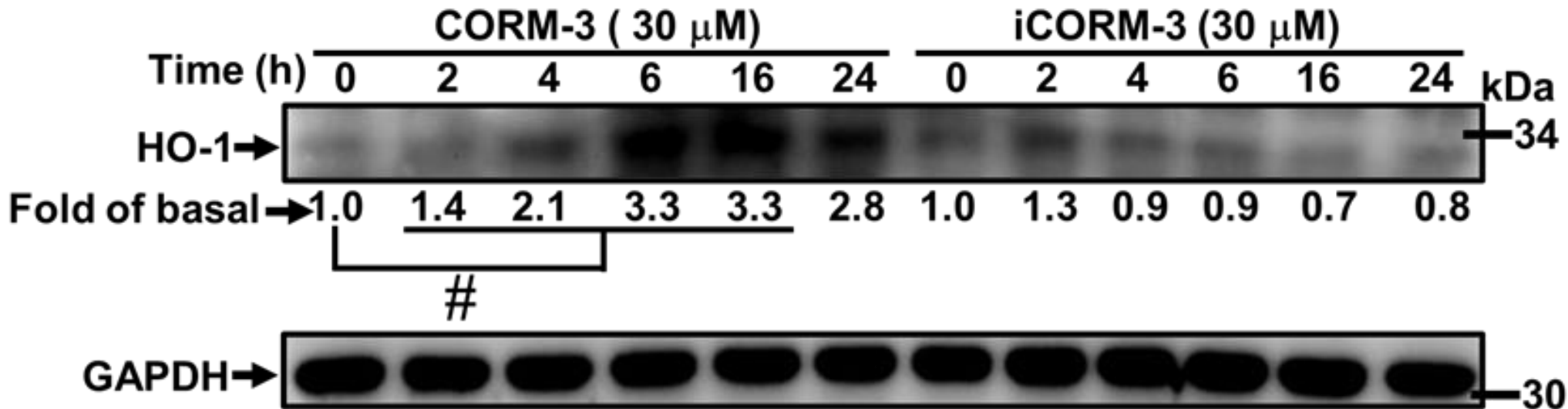
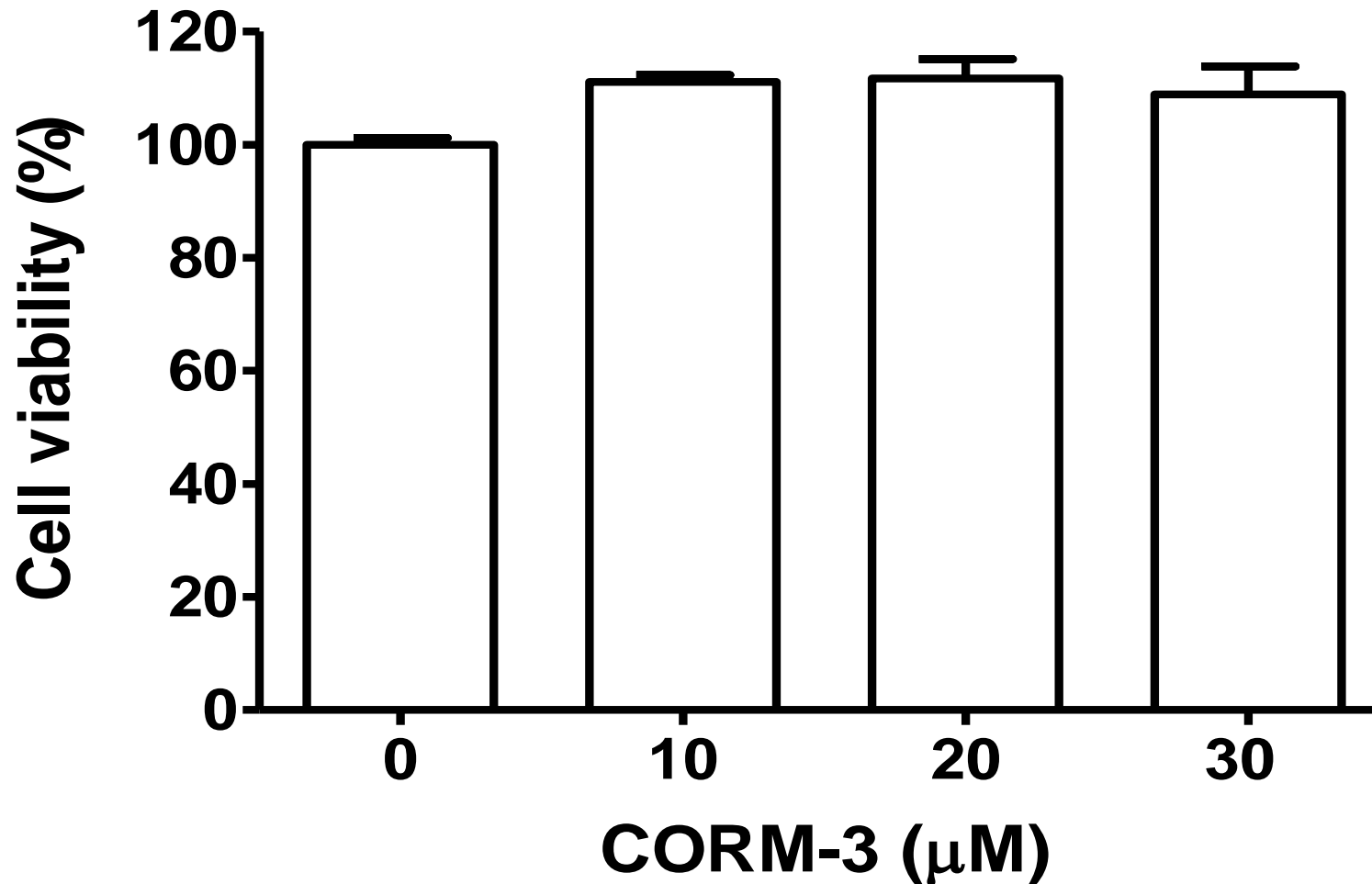


## Supplementary Figure 1.



Supplementary Figure 1. RBA-1 cells were incubated with 30  $\mu$ M either CORM-3 or i-CORM-3 for the indicated time intervals and the levels of HO-1 were determined by western blot. # $p < 0.05$ , as compared with respective control.

## Supplementary Figure 2.



Supplementary Figure 2. RBA-1 cells were incubated with or without the indicated dosages (10, 20, 30 μM) of CORM-3 for 24 h and the levels of cell viability were determined by an XTT assay.