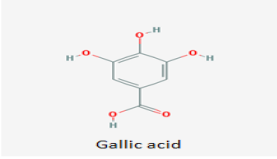
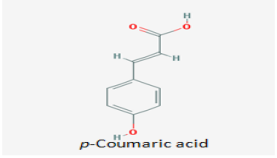
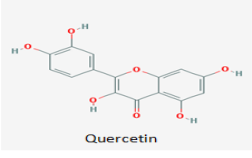
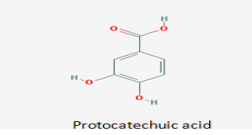
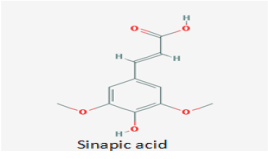
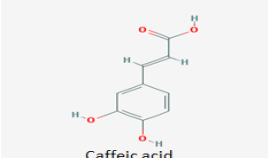
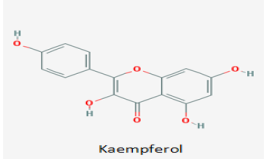
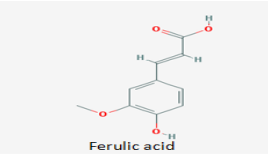
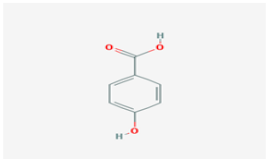
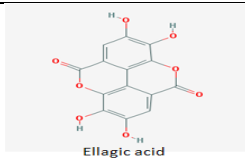


S. No	Compounds identified and their Structure	Retention time	Quantity (mg/100g of dry weight)
1.	 <p>Gallic acid</p>	6.398	53.0±0.06
2.	 <p>p-Coumaric acid</p>	6.793	71.9±0.05
3.	 <p>Quercetin</p>	7.281	29.6±0.05
4.	 <p>Protocatechuic acid</p>	6.247	40.6±0.10
5.	 <p>Sinapic acid</p>	4.949	30.8±0.14
6.	 <p>Caffeic acid</p>	4.843	15.8±0.03
7.	 <p>Kaempferol</p>	7.712	10.2±0.09
8.	 <p>Ferulic acid</p>	8.859	2.71±0.02
9.	 <p>p-Hydroxy benzoic acid</p>	6.688	0.52±0.04

10.



3.894

5.8±0.09