

Exosomal lncRNA PVT1/VEGFA axis promotes colon cancer metastasis and stemness by downregulation of tumor suppressor miR-152-3p

Shiue-Wei Lai^{1,2#}, Ming-Yao Chen^{3,4#}, Oluwaseun Adebayo Bamodu⁵, Ming-Shou Hsieh⁵, Ting-Yi Huang⁵, Chi-Tai Yeh^{5,8}, Wei-Hwa Lee⁹ and Yih-Giun Cherng^{10,11*}

1 Division of Hematology-Oncology, Department of Internal Medicine, Tri-Service General Hospital, National Defense Medical Center, Taipei, Taiwan.

2 Department of Internal Medicine, Tri-Service General Hospital Penghu Branch, Penghu, Taiwan.

3 Division of Gastroenterology and Hepatology, Department of Internal Medicine, Shuang Ho Hospital, New Taipei City, Taiwan.

4 Division of Gastroenterology and Hepatology, Department of Internal Medicine, School of Medicine, College of Medicine, Taipei Medical University, Taipei, Taiwan.

5 Department of Medical Research & Education, Taipei Medical University - Shuang Ho Hospital, New Taipei City, 235, Taiwan.

6 Department of Medical Laboratory Science and Biotechnology, Yuanpei University of Medical Technology, Hsinchu 300, Taiwan.

7 Department of Pathology, Taipei Medical University-Shuang Ho Hospital, New Taipei City, Taiwan

8 Department of Anesthesiology, Shuang Ho Hospital, Taipei Medical University, New Taipei City, Taiwan.

9 Department of Anesthesiology, School of Medicine, College of Medicine, Taipei Medical University, Taipei, Taiwan.

These authors have contributed equally to this work

* Correspondence:

Dr. Yih-Giun Cherng, MD

Department of Anesthesiology, Shuang Ho Hospital, Taipei Medical University, New Taipei City, Taiwan. No. 291, Zhongzheng Road, Zhonghe District, New Taipei City, Taiwan 235.

Email: stainless@s.tmu.edu.tw

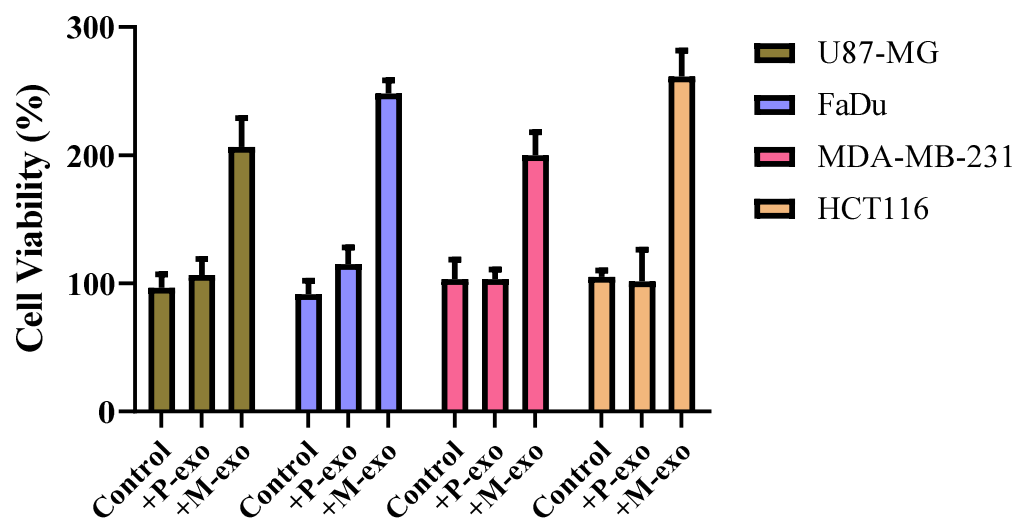
Tel.: +886-2-2490088 ext. 8885

Supplementary Table 1. Primer sequences used in this study

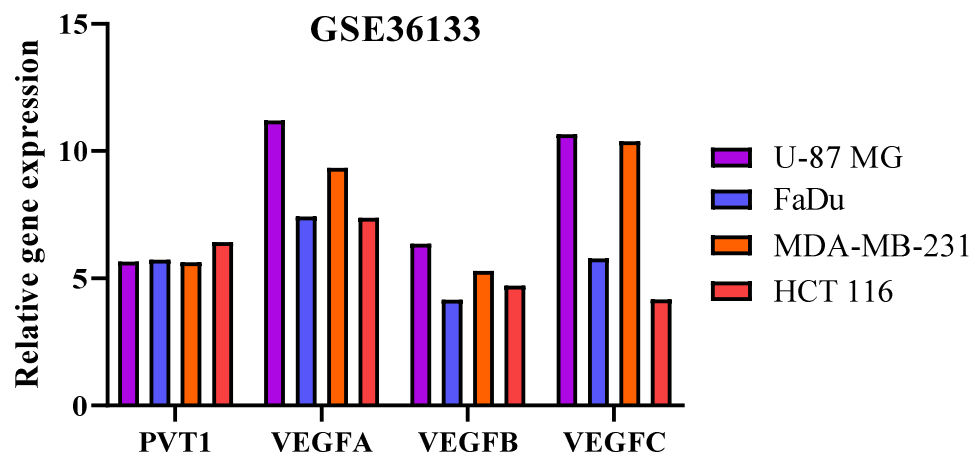
Gene	Forward sequence	Reverse sequence
<i>PVT1</i>	TCGAGGTCATAGTTCCTGTTGG	GCCCCTTCTATGGGAATCACTA
<i>EGFR</i>	GGCACTTTTGAAGATCATTTTCTC	CTGTGTTGAGGGCAATGAG
<i>VEGFA</i>	ATCTGCATGGTGATGTTGGA	GGGCAGAATCATCACGAAGT
<i>GAPDH</i>	GAGTCAACGGATTTGTCGT	GACAAGCTTCCCGTTCTCAG
<i>RPL19</i>	ATGACTGCATCGTTGATAAAATCC	GGCGCAAATCCTCATTCTC

Supplementary Table 2. Clinical table (GSE17537) of Figure 1B

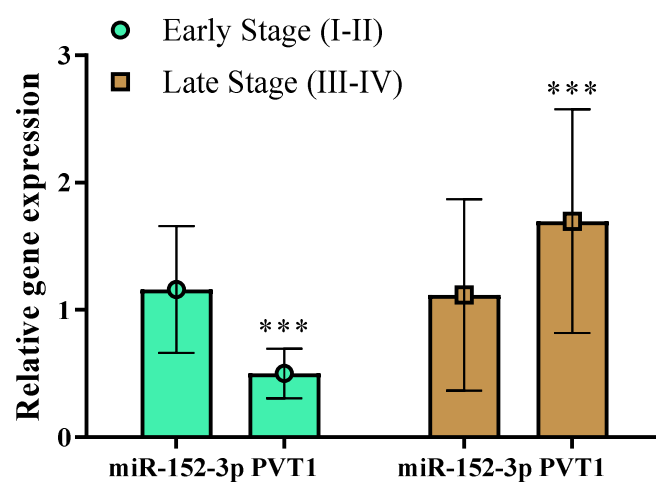
Clinicopathological Variables	No.	PVT1		x ²	p-value
		High expression	Low expression		
Age, years					
≤62	29	12	17	2.229	0.135
>62	26	16	10		
Gender					
Male	26	9	17	5.238	0.022
Female	29	19	10		
Primary Stage					
I+II	19	8	11	0.900	0.343
III+IV	36	20	16		



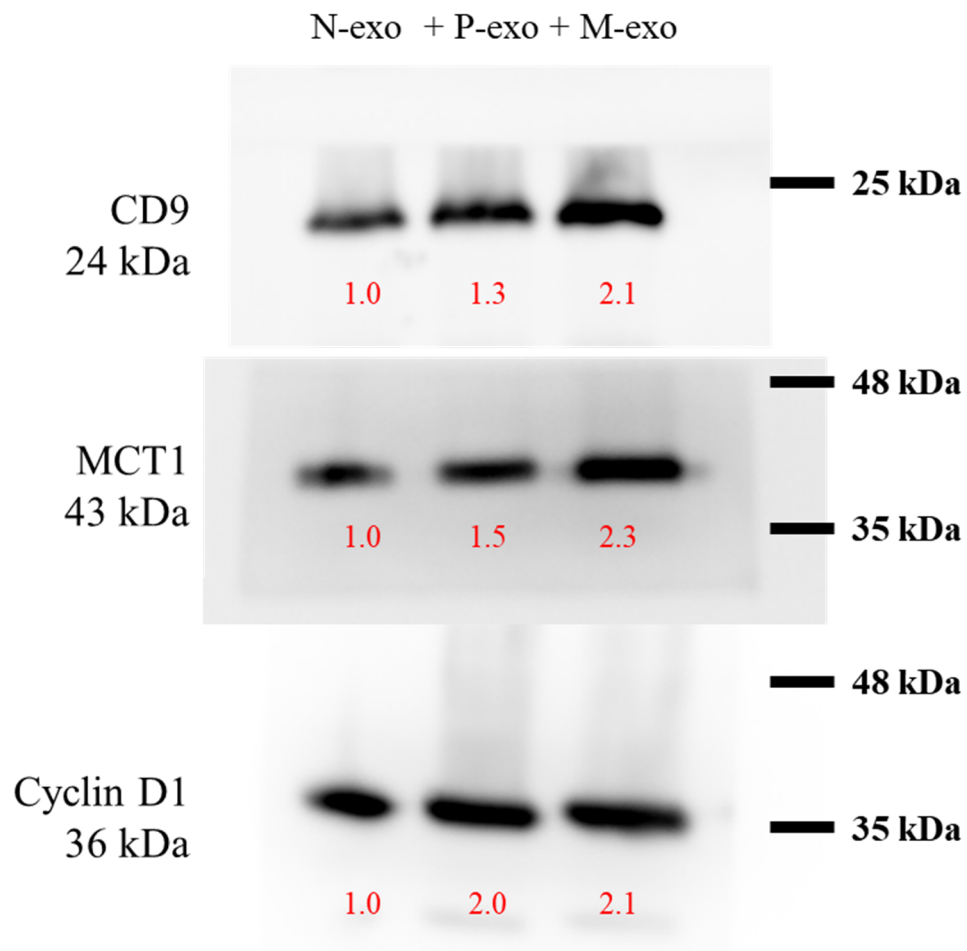
Supplementary Figure S1. Cell viability of different cancer cell lines with exosome treatment.



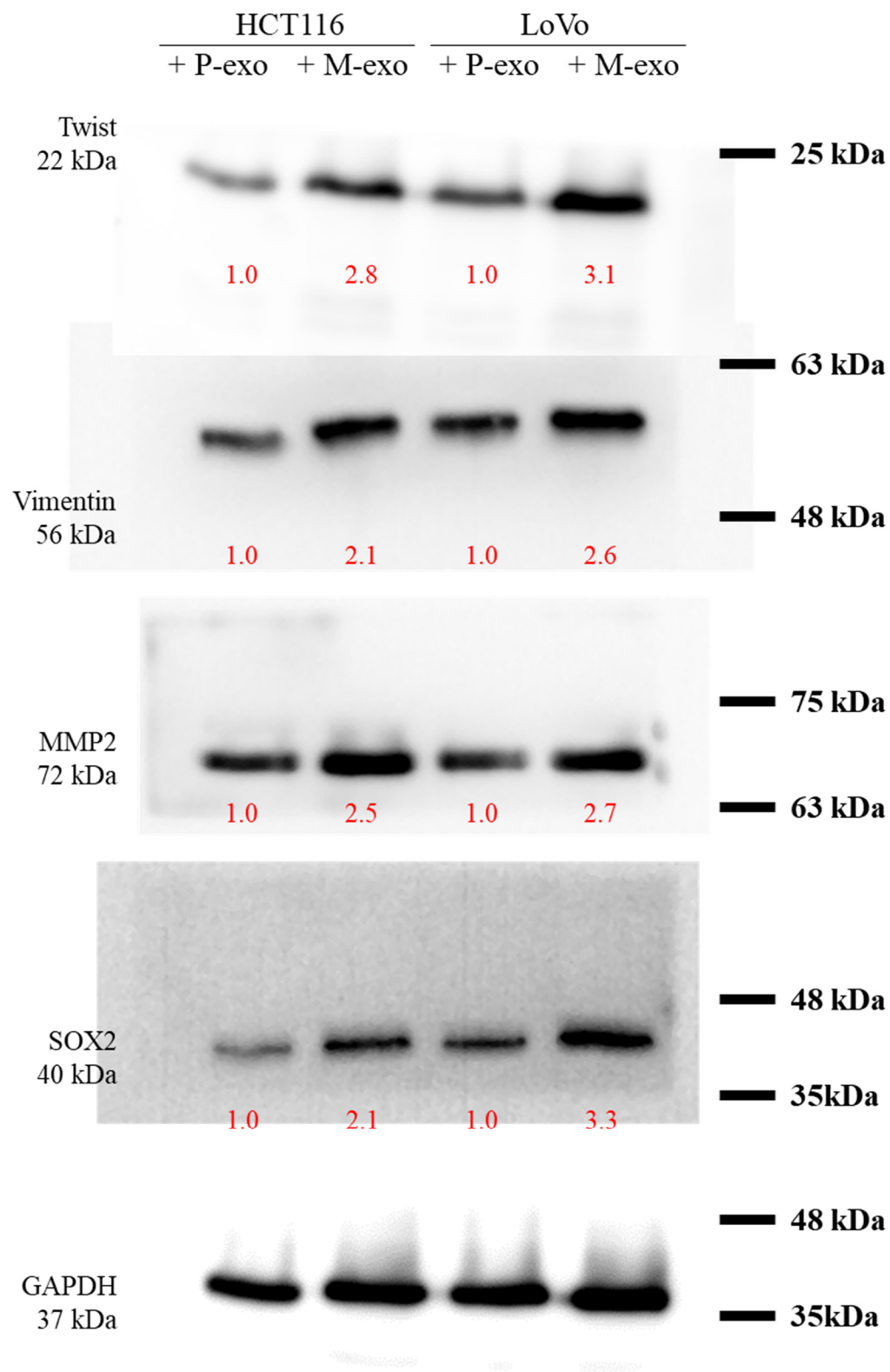
Supplementary Figure S2. Gene expression of PVT1 and VEGF family in different cancer cell lines.



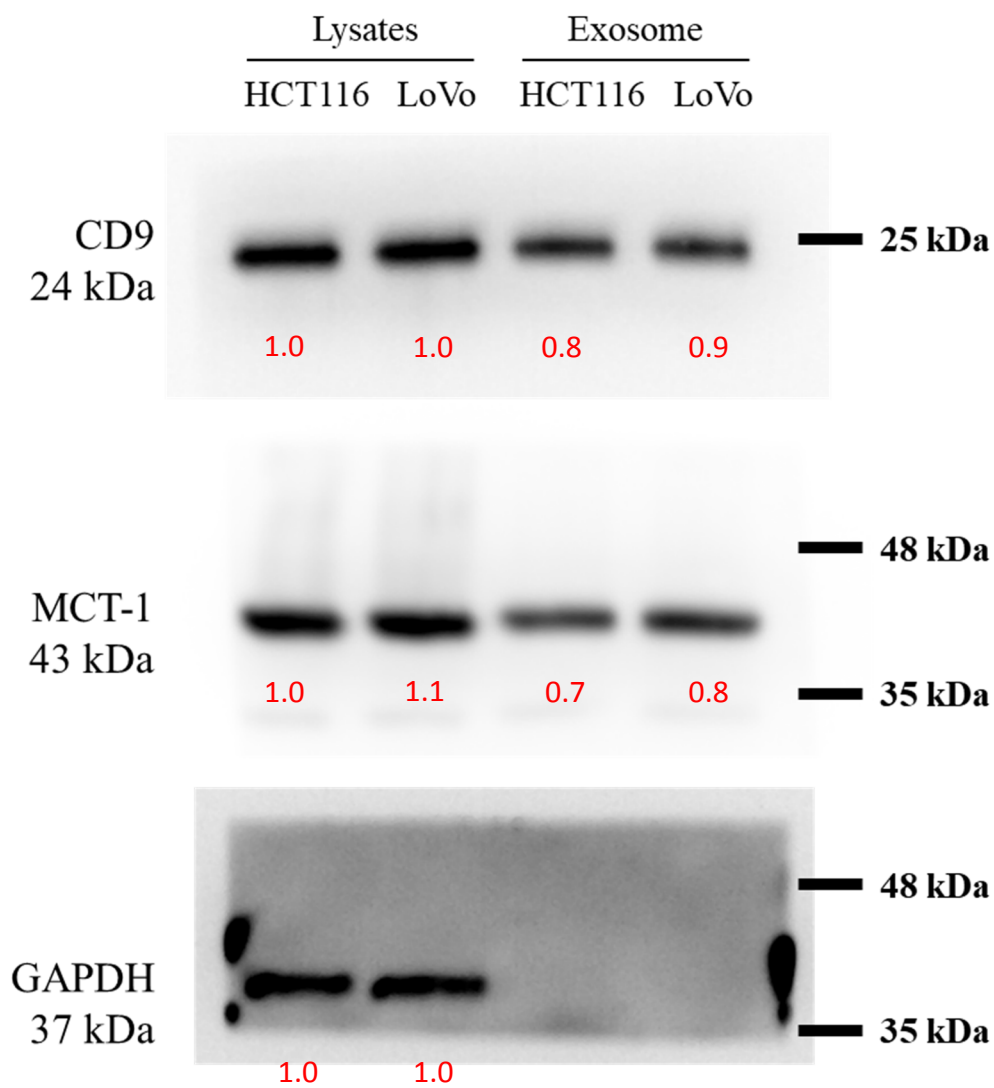
Supplementary Figure S3. Relative gene expression of miR-152-3p and PVT1 in primary stages



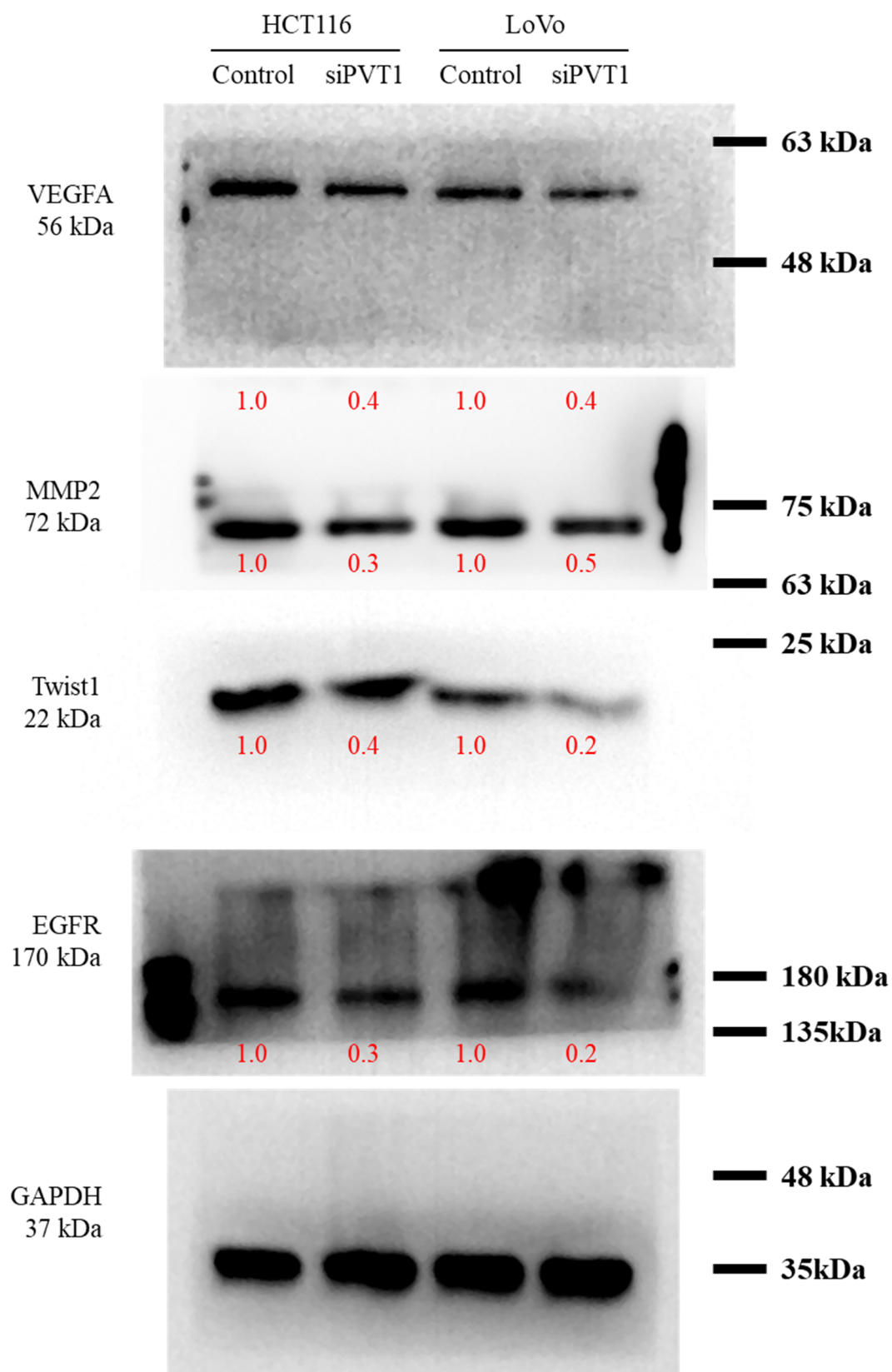
Supplementary Figure S4. Full-size blots of Figure 2A



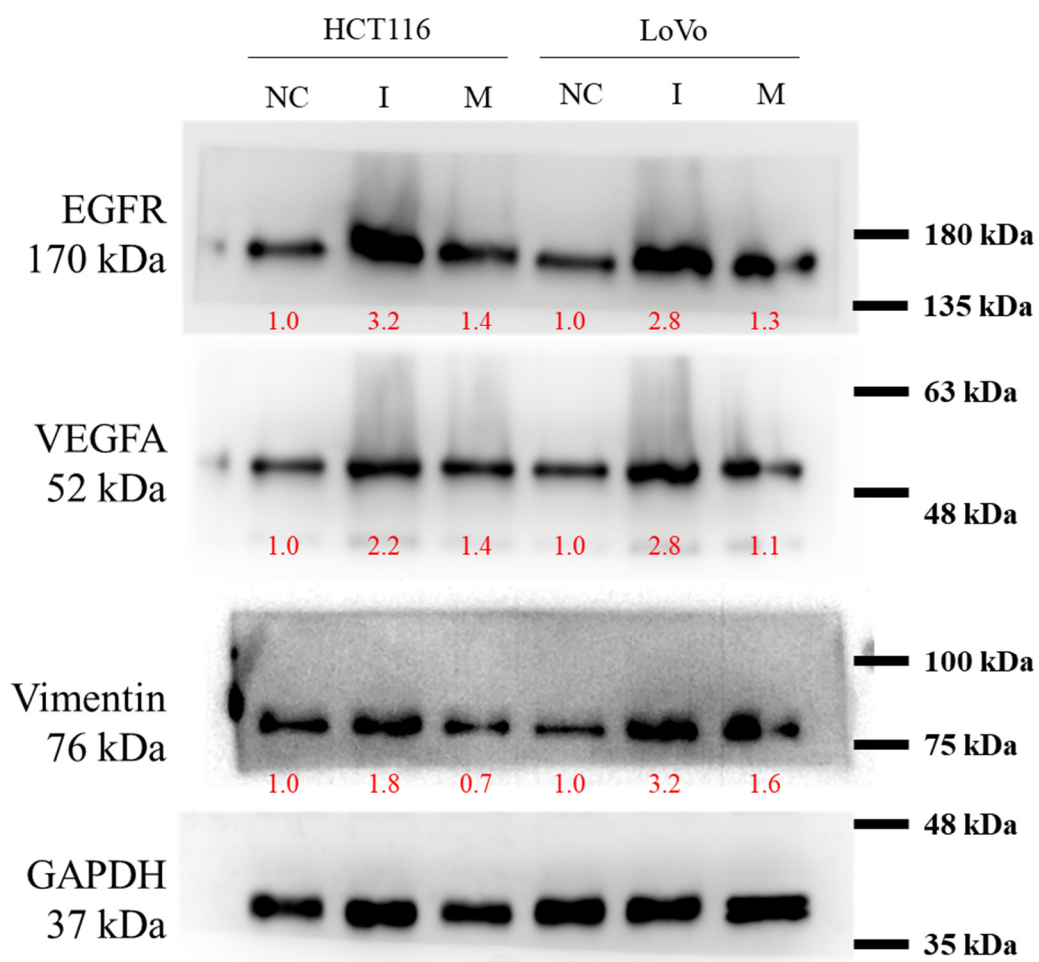
Supplementary Figure S5. Full-size blots of Figure 2E



Supplementary Figure S6. Full-size blots of Figure 4B



Supplementary Figure S7. Full-size blots of Figure 4E



Supplementary Figure S8. Full-size blots of Figure 5E

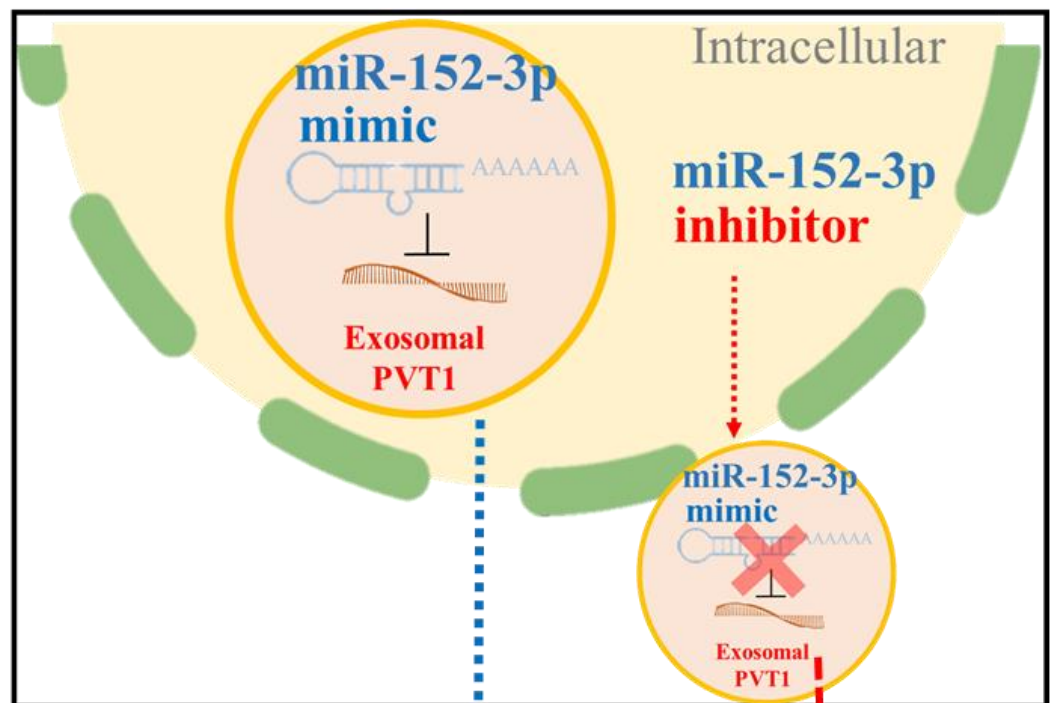
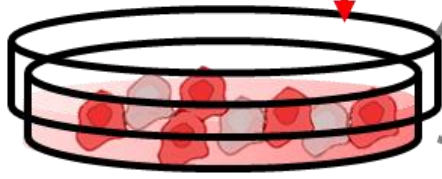
In vitro model

HCT116 and LoVo cell lines

P-exo



M-exo



Twist
MMP2
SOX2
Vimentin



Tumor sphere
Invasion



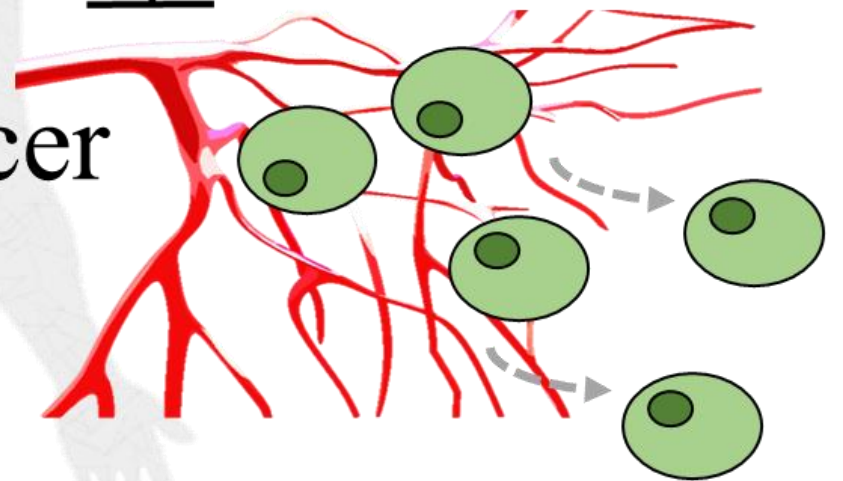
VEGFA
EGFR
Vimentin



VEGFA
EGFR
Vimentin



Colon cancer



Metastatic cells

In vivo model

Patient-derived xenograft (PDX)

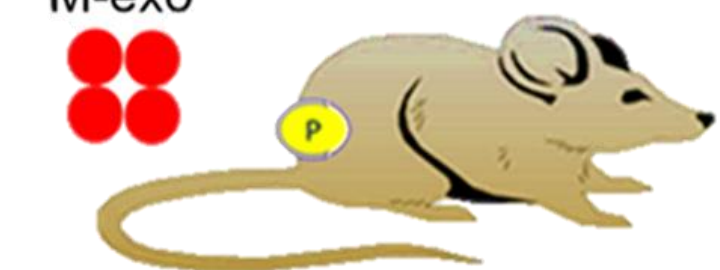


Primary tumor (P-exo)

P-exo



M-exo



Distant metastasis (M-exo)

Figure 6