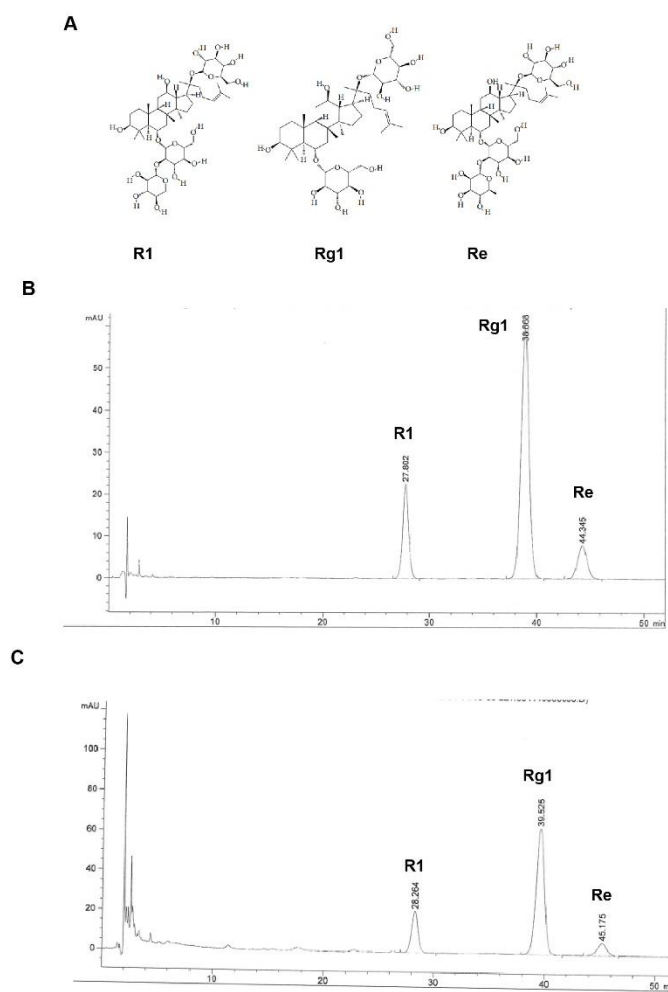
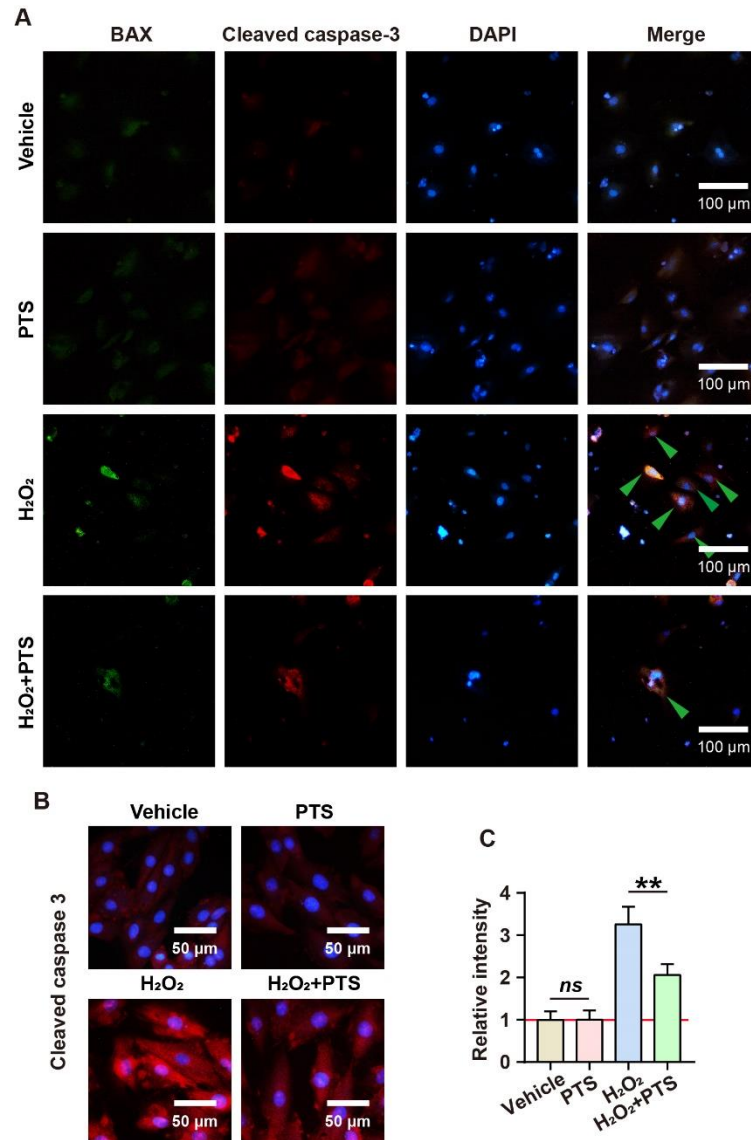


Supplementary Material

Supplementary Figures



Supplementary Figure 1. Chemical structures and representative HPLC chromatograms of PTS. (A) Chemical structures of R1, Rg1, and Re. (B) HPLC chromatogram of reference compounds. (C) HPLC chromatogram of PTS extract. UV absorbance of the HPLC samples was monitored at 210 nm.



Supplementary Figure 2. (A) Representative Bax and cleaved caspase 3 immunofluorescence staining of NRCMs. (B) Representative cleaved caspase 3 immunofluorescence staining of H9C2 and quantitative analysis of cleaved caspase 3 expression was displayed in (C). Data were expressed as mean \pm SEM, $n=3$, $*P < 0.05$, $**P < 0.01$, ns means no significant.

Supplementary Tables

Supplementary Table 1. Antibodies used

Antibody	Catalog	Company	Application	Dilution
SOD1	10269-1-AP	Proteintech	IF/WB	1:200/1:1000
Cleaved caspase-3	19677-1-AP	Proteintech	IF/WB	1:200/1:1000
Cleaved PARP-1	13371-1-AP	Proteintech	WB	1:1000
Bax	60267-1-Ig	Proteintech	IF/WB	1:200/1:1000
Cyt-c	10993-1-AP	Proteintech	WB	1:1000
Nrf2	16396-1-AP	Proteintech	IF/WB	1:200/1:1000
	66504-1-Ig	Proteintech	IP	10 µg
Keap1	60027-1-Ig	Proteintech	WB	1:1000
	10503-2-AP	Proteintech	IP	10 µg
Ubiquitin	10201-2-AP	Proteintech	WB	1:1000
HO1	10701-1-AP	Proteintech	IF/WB	1:200/1:1000
β-actin	HRP-60008	Proteintech	WB	1:5000