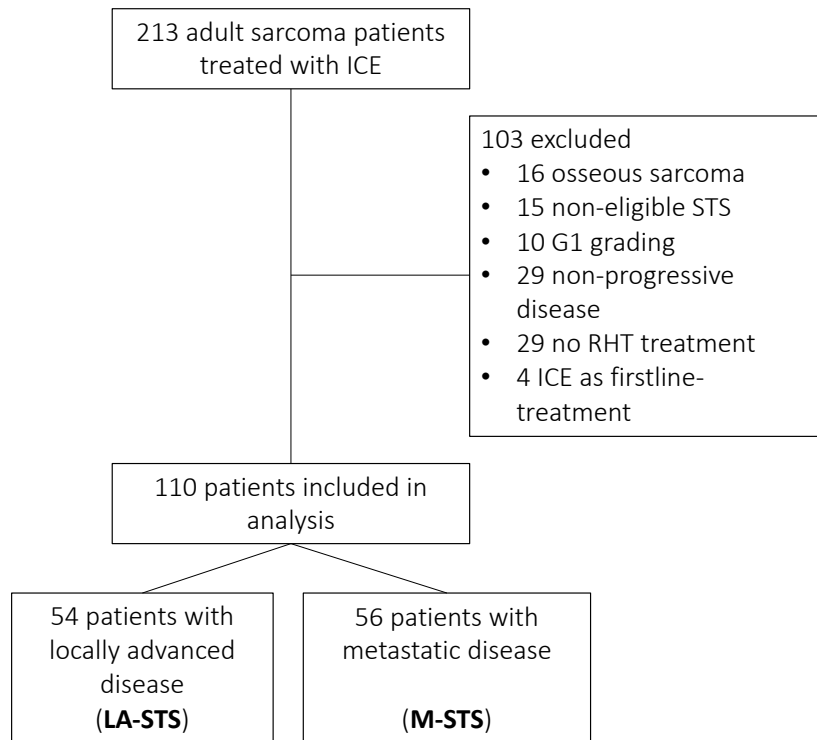
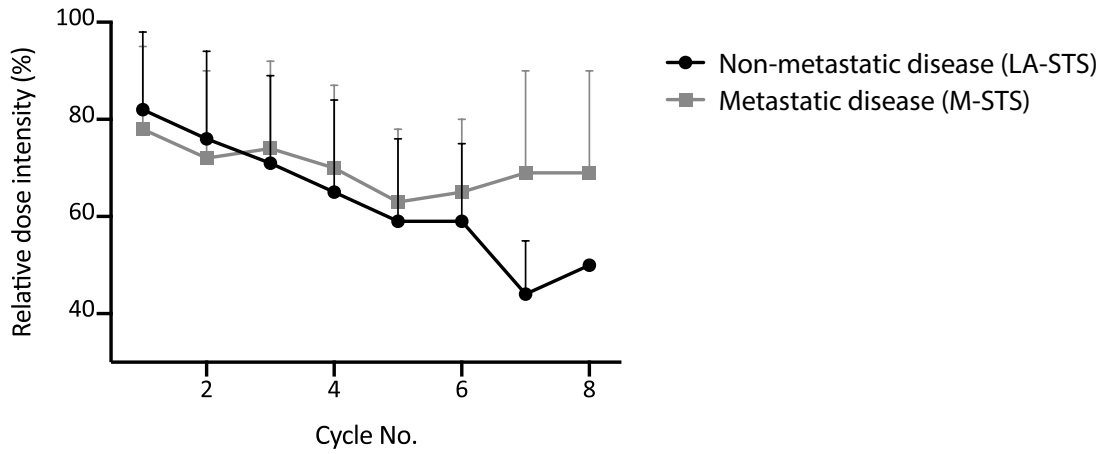


1 Supplementary material



2 Supplementary Figure 1: Selected patient populations. **Abbreviations:** STS: soft-tissue sarcoma



3 Supplementary Figure 2: Relative dose intensity of applied ICE cycles. Full-dosed ICE (as described in the
4 patients and methods paragraph) over four days was considered 100%.

5 Supplementary Table 1: Prognostic factors for progression-free survival for LA-STs patients. P values were
6 calculated using the log-rank test for univariate analysis. For multivariate analysis using a Cox model, only
7 parameters with a p <0.10 in univariate analyses were considered. **Abbreviations:** HR: Hazard ratio, mo:
8 months, NA: not assessable, OS: overall survival.

Parameter	N	Univariate analysis		Cox model	
		Median PFS, mo (95% CI)	p	HR (95% CI)	p
Age			0.29		
>50 years	38	10 (8-15)			
≤50 years	16	9 (6-29)			
Sex			0.49		
Male	31	10 (8-12)			
Female	23	9 (6-22)			
Treatment line			0.15		
2 nd line	46	10 (9-15)			
> 2 nd line	8	9 (6-NA)			
Grading			0.003	3.10 (1.028-9.34)	0.045
3	32	9 (5-10)			
2	22	20 (11-36)			
Histologic sub-entity			0.043	0.88 (0.395-1.98)	0.762
Lipo-/Leiomyosarcoma	28	11 (6-29)			
Non-Lipo-/Leiomyosarcoma	26	9 (7-11)			
Surgery			0.008	0.45 (0.196-1.02)	0.054
Yes	31	11 (9-21)			
No	23	8 (5-11)			
Response/Disease stabilization as best radiographic response with ICE+RHT			<0.0001	0.15 (0.054-0.39)	<0.001
Yes	26	10 (9-27)			
No	9	3 (2-NA)			
Type of progression			0.0002	0.42 (0.175-0.99)	0.048
Progression after response to prior chemotherapy	32	11 (9-27)			
Primary refractory disease	22	5 (4-10)			

9

10 Supplementary Table 2: Prognostic factors for overall survival for M-STS patients. P values were calculated
 11 using the log-rank test for univariate analysis. For multivariate analysis using a Cox model, only parameters with
 12 a p <0.10 in univariate analyses were considered. **Abbreviations:** HR: Hazard ratio, mo: months, NA: not
 13 assessable, OS: overall survival.

Parameter	N	Univariate analysis		Cox model	
		Median OS, mo (95% CI)	p	HR (95% CI)	p
Age			0.24		
>50 years	27	15 (11-27)			
≤50 years	29	11 (8-19)			
Sex			0.56		
Male	26	11 (7-19)			
Female	30	13 (10-31)			
Treatment line			0.12		
2 nd line	40	11 (8-17)			
> 2 nd line	16	15 (11-42)			
Grading			0.07	1.33 (0.68-2.60)	0.406
3	39	10 (7-19)			
2	17	15 (13-NA)			
Histologic sub-entity			0.19		
Lipo-/Leiomyosarcoma	22	11 (7-17)			
Non-Lipo-/Leiomyosarcoma	34	17 (11-34)			
Surgery			0.52		
Yes	15	15 (11-35)			
No	41	11 (7-19)			
Response/Disease stabilization as best radiographic response with ICE+RHT			<0.0001	0.36 (0.19-0.70)	0.002
Yes	26	18 (15-35)			
No	24	7 (5-19)			
Type of progression			0.33		
Progression after response to prior chemotherapy	19	15 (11-34)			
Primary refractory disease	37	10 (7-17)			

14