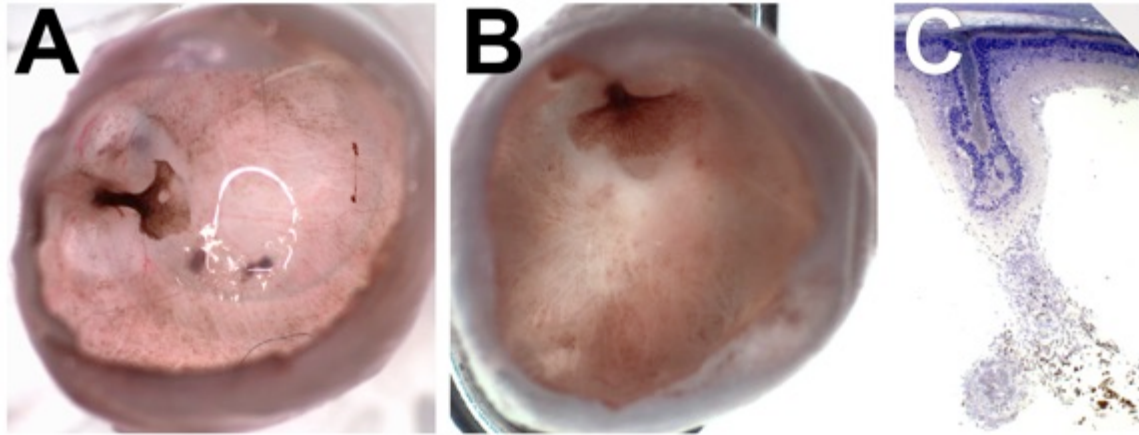


<b><i>Uninjected</i></b>			
<b>Age</b>	<b>Sex</b>	<b>Observation</b>	<b>Location</b>
0 y 4 m	Female	Alopecia/Pruritus/Dermatitis	back
0 y 4 m	Female	Alopecia/Pruritus/Dermatitis	rear dorsum
0 y 5 m	Female	Eye closed/discharge	right eye
0 y 5 m	Female	Eye closed/discharge	right eye
0 y 6 m	Female	Eye closed/discharge	left eye
0 y 6 m	Male	Found Dead	
0 y 7 m	Female	Neoplasm	by front limbs
0 y 7 m	Male	Not Drinking/Dehydrated	
0 y 11 m	Female	Eye closed/discharge	right eye
0 y 11 m	Female	Eye closed/discharge	left eye
1 y 0 m	Female	Found Dead	
1 y 1 m	Female	Lame/Lethargic/Unthrifty	right forelimb
1 y 3 m	Female	Neoplasm	inguinal-left side
1 y 4 m	Female	Neoplasm	abdominal area
<b><i>iPSC-RPE injected</i></b>			
<b>Age</b>	<b>Sex</b>	<b>Observation</b>	<b>Location</b>
0 y 3 m	Female	Lesions--cut, gash, wound, etc.	left side
1 y 0 m	Female	Eye closed/discharge	left (uninj) eye
1 y 4 m	Female	Neoplasm	axillary-right side
1 y 4 m	Female	Hunched/Ruffled Coat/labored breathing/weight loss	
1 y 5 m	Male	Swollen foot	left rear foot
1 y 5 m	Female	Eye closed/discharge	left (uninj) eye
1 y 5 m	Female	Eye closed/discharge	right (inj) eye
1 y 10 m	Female	Eye closed/discharge	left (uninj) eye
2 y 1 m	Male	Porphyrin	left (uninj) eye



**SI Figure 1**

**SI Table 1. Summary of the filed health and daily behavior reports.** All the reports were collected and listed by age.

**SI Fig. 1. Occasional complications of injecting suspensions of iPS-RPE.** (A-C)

Reflux of RPE cells and acute damage to the retina at the injection site. (A&B)

Pigmented cells can be seen in a “spout” in the vitreous of enucleated eyes. (C)

Histology shows damage at the injected site and accumulations of pigment-laden cells in the vitreous.