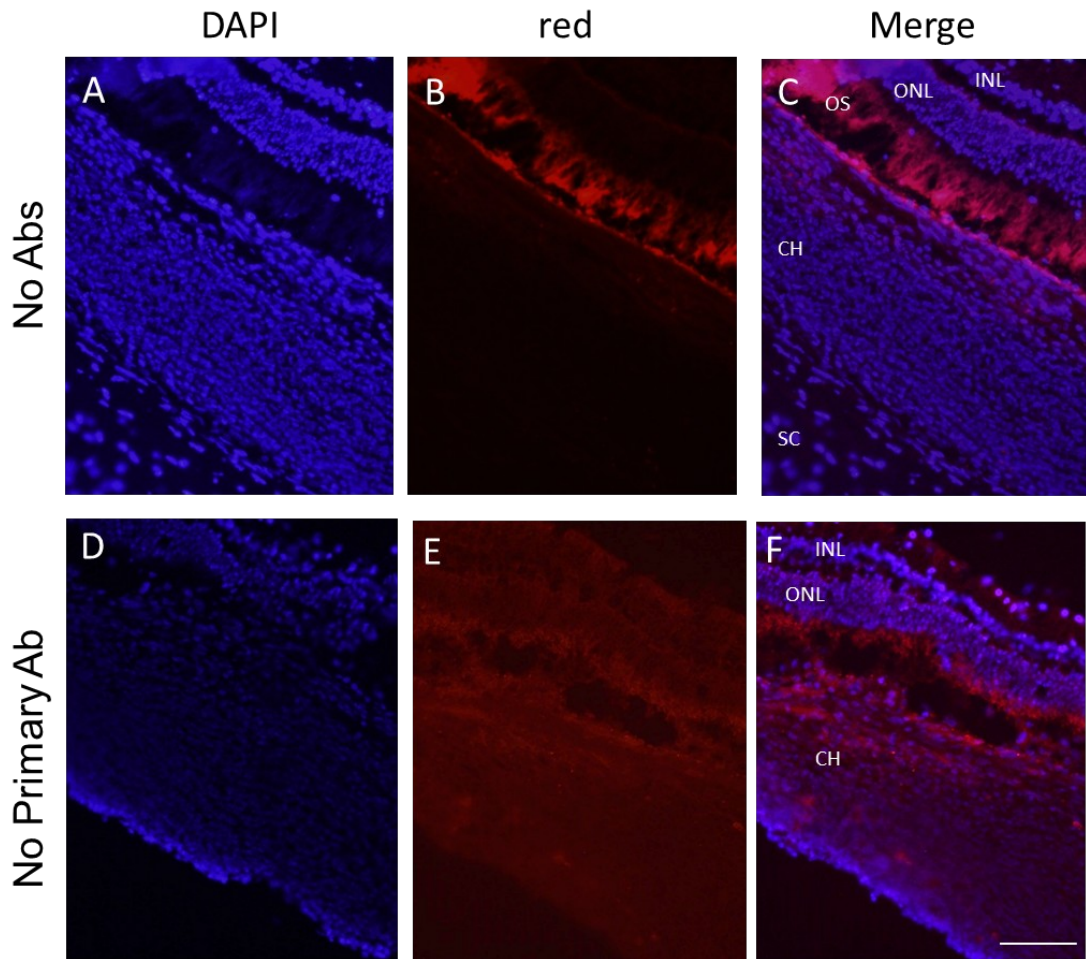


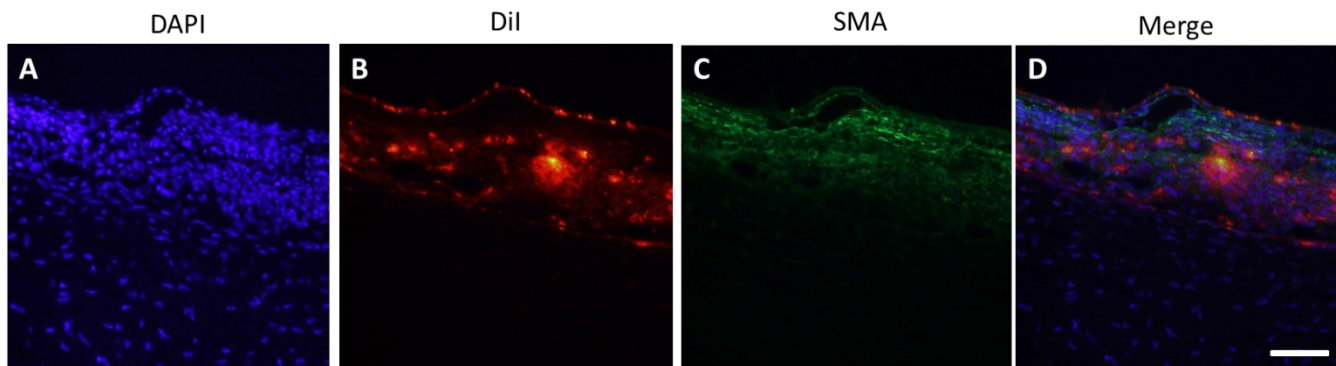
Supplementary Figure 1 – Identification of hBMSCs in the EVSC 2 weeks following transplantation.

Frozen sections of rabbit eyes removed at 2 weeks following transplantation of hBMSCs were stained with DAPI only (with no antibodies, panels A-C) or incubated with secondary antibody only (D-F). All sections were counter-stained with DAPI (blue). The lack of nuclear staining in the EVSC demonstrates the specific staining of the anti human nuclei antibody shown in Figure 2. Scale bar 100µm. Ab-antibody.



Supplementary Figure 2. Transplanted hBMSCs are located between the blood vessels in the EVSC compartment.

Frozen sections of eyes removed 4 days following transplantation of Dil-labeled hBMSCs (red, B & D) were stained with an antibody directed against smooth muscle actin (SMA, green, C & D) and photographed using a fluorescent microscope. Sections were counter-stained with DAPI (blue, A & D). Scale bar 100 μm .



Supplementary Figure 3. Representative fluorescent images of a non-transplanted rabbit eye demonstrating the tissue autofluorescence.

Frozen sections of non-transplanted eyes were stained with DAPI and photographed with a fluorescent microscope using a similar exposure time (200 msec) used for photographing the anti-human nuclei antibody staining of transplanted eyes. ONL – outer nuclear layer; OS – outer segments; CH- choroid; SC-sclera. Scale bar 100 μ m.

