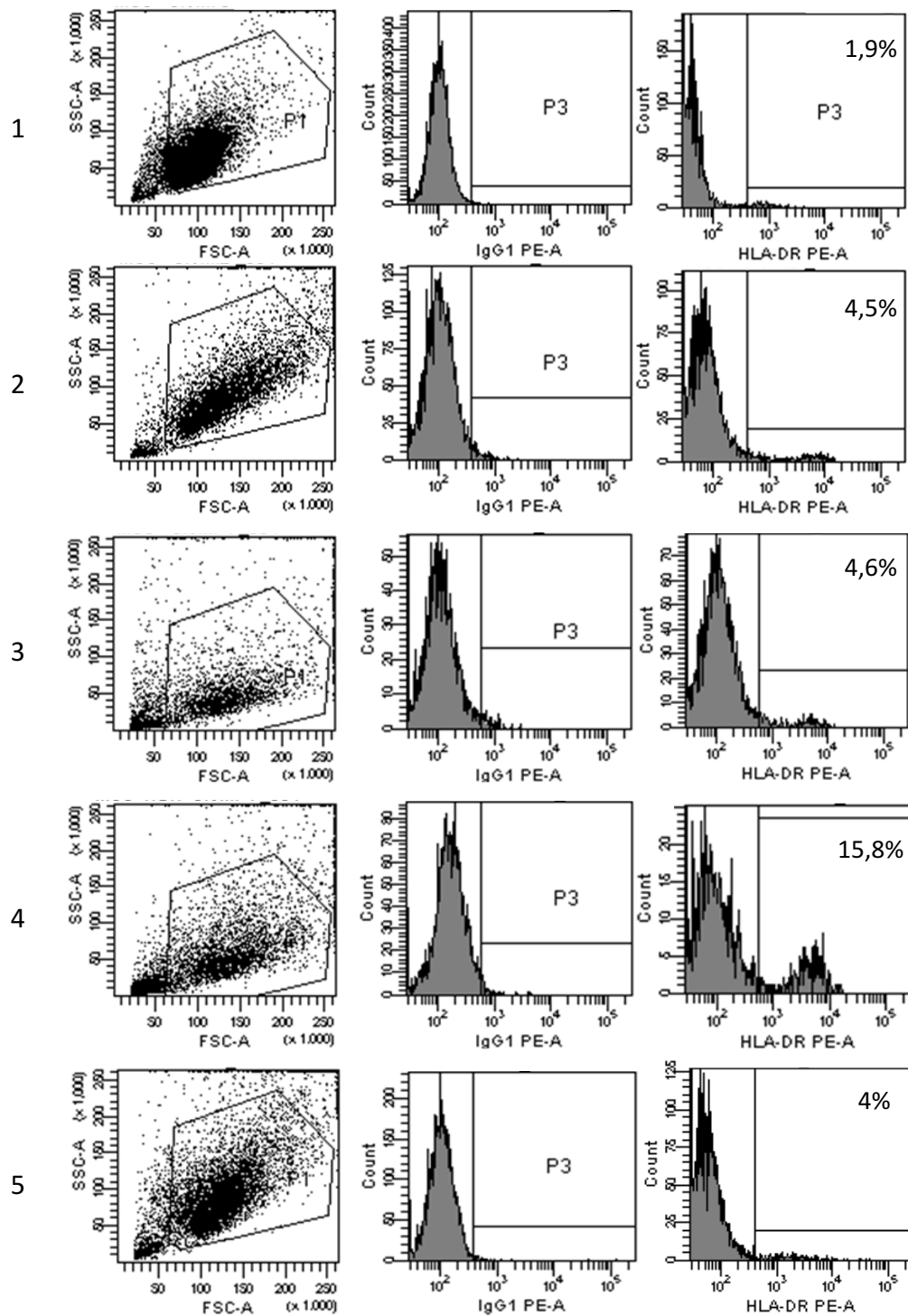


**Figure S1.** Flow cytometry analysis of HLA-DR expression in MSCs. Data show representative samples of bone marrow (1), bowel (2) and Crohn (3) MSCs, labeled with R-phycoerythrin mouse anti-human HLA- DR (Becton-Dickinson). R-phycoerythrin-labeled mouse IgG1 (R&D System) was used as isotype control.



**Figure S2.** Flow cytometry analysis of HLA-DR expression on intestinal MSCs at increasing levels of inflammation (1-4) and on colon adenocarcinoma (5). Data show the percent values of HLA-DR<sup>+</sup> cells for each sample. MSCs were labeled with R-phycoerythrin mouse anti-human HLA-DR (Becton-Dickinson), R-phycoerythrin-labeled mouse IgG1 (R&D System) was used as isotype control.