

Figure S1: Cell number of the proliferated cells in 0 – 1000 μg/mL AC-GlcNAc-coated dishes at 13 days. Rat bone marrow cells (3×10^6 cells) were seeded on 0 – 1000 μg/mL AC-GlcNAc-coated dishes and were cultured for 13 days.

CD11b/c

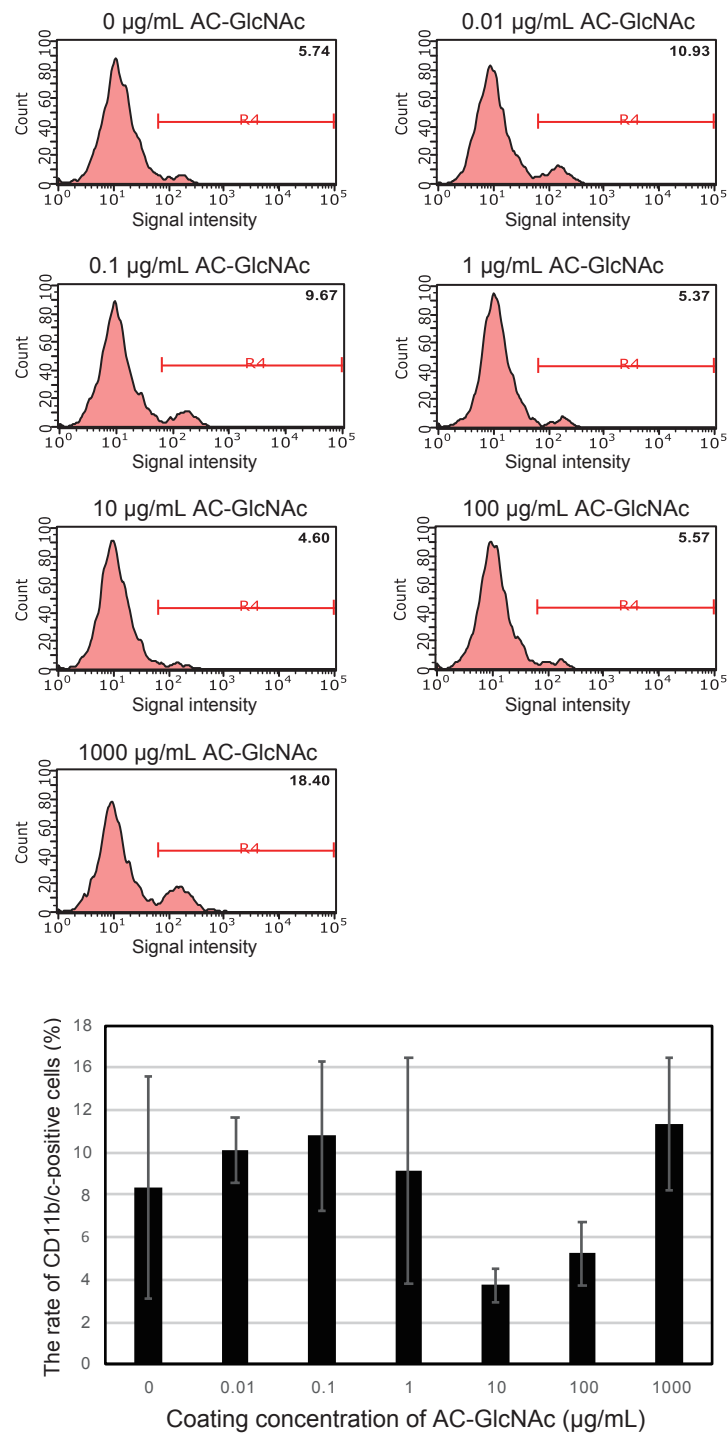
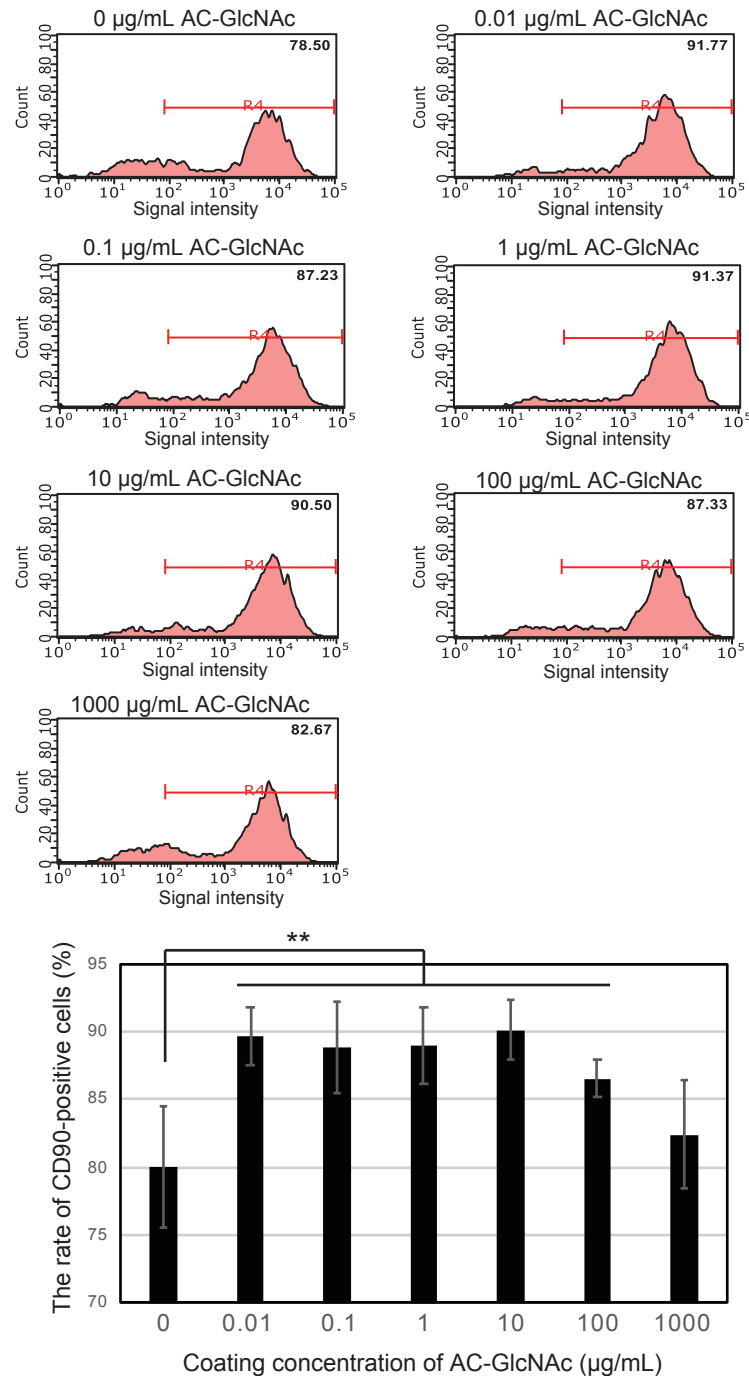


Figure S2: Flow cytometric analysis for CD11b/c expression of the proliferated cells in 0 – 1000 $\mu\text{g/mL}$ AC-GlcNAc-coated dishes at 13 days. The lower bar graph showed the percentage (%) of CD11b/c-positive cells.

CD90



****** $P < 0.05$, $n = 3$

Figure S3: Flow cytometric analysis for CD90 expression of the proliferated cells in 0 – 1000 µg/mL AC-GlcNAc-coated dishes at 13 days. The lower bar graph showed the percentage (%) of CD90-positive cells.