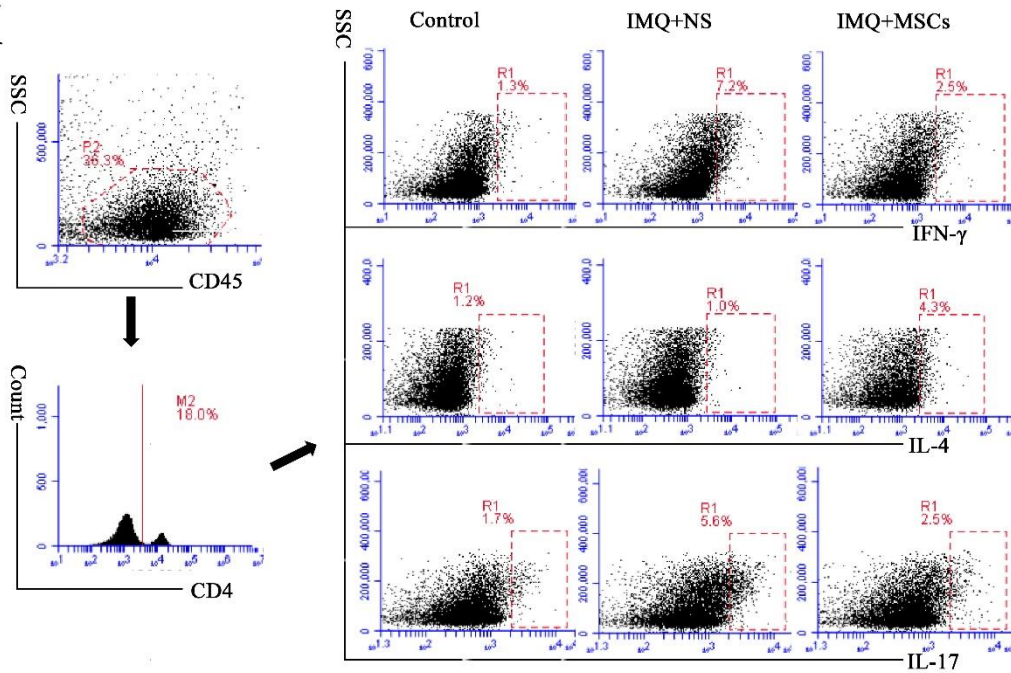


Supplementary material

S1  
A



B

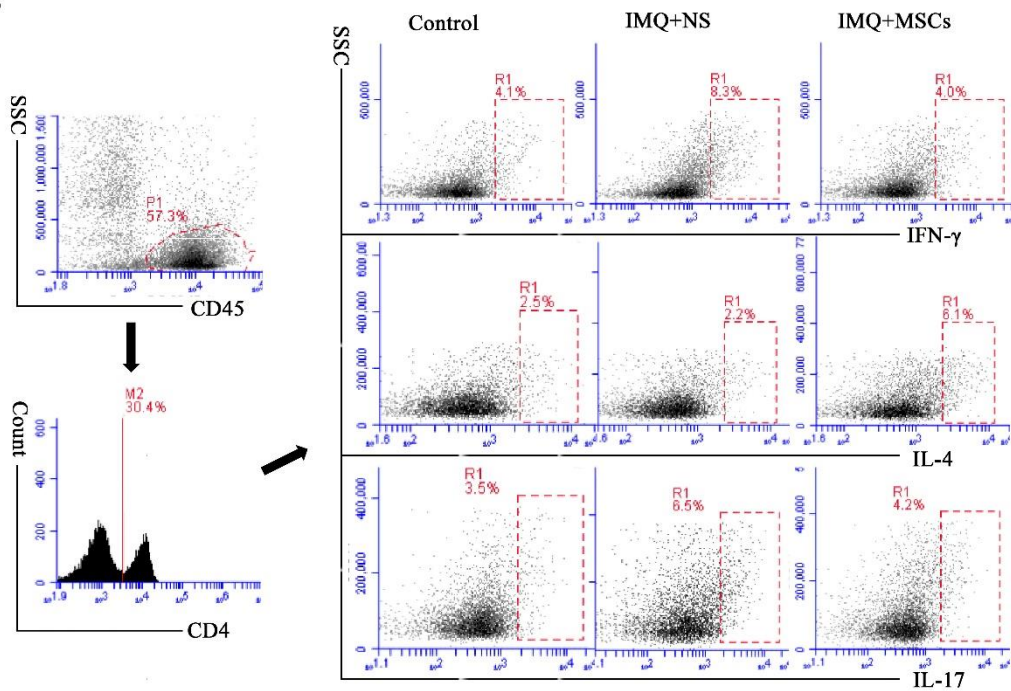
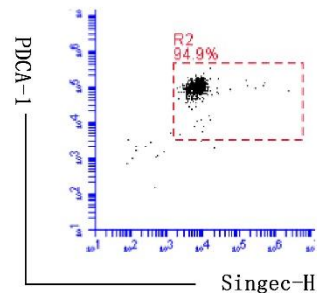


Figure. S1: The gating strategy and representative FACS plots for mice Th1, Th2 and Th17 in spleen(A) and dLN(B) on day 8.-

S2



S3

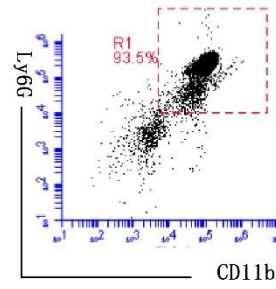


Figure. S2-S3: The **representative FACS plots of purified purity of mouse** splenic pDCs(identified as B220<sup>+</sup>Siglec-H<sup>+</sup>PDCA-1<sup>+</sup>) and neutrophils(identified as CD11b<sup>+</sup>Ly6G<sup>+</sup>) isolated in our experiments.