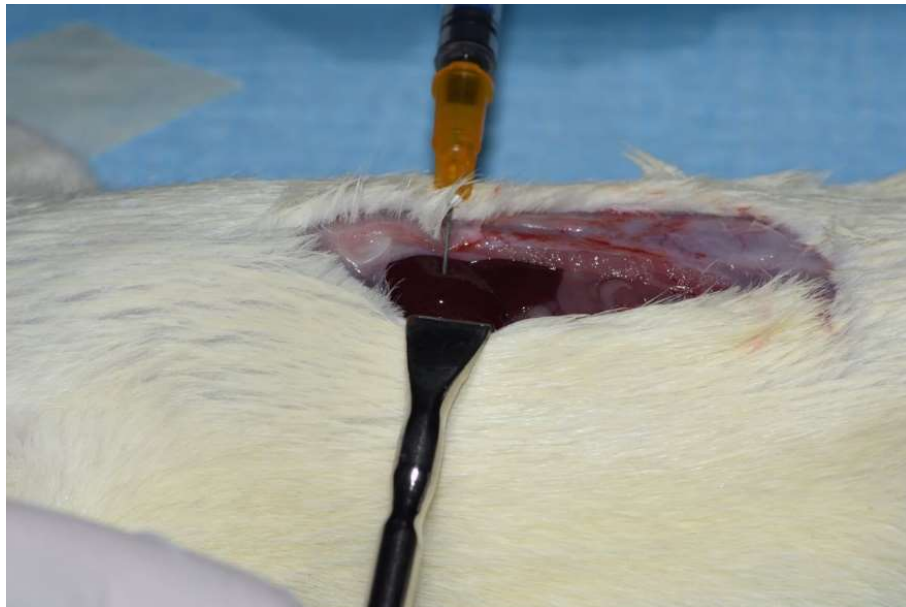


Mesenchymal stem cells therapy facilitates donor lung preservation by reducing oxidative-damage during ischemia.

Supplementary Methods: surgical procedure.

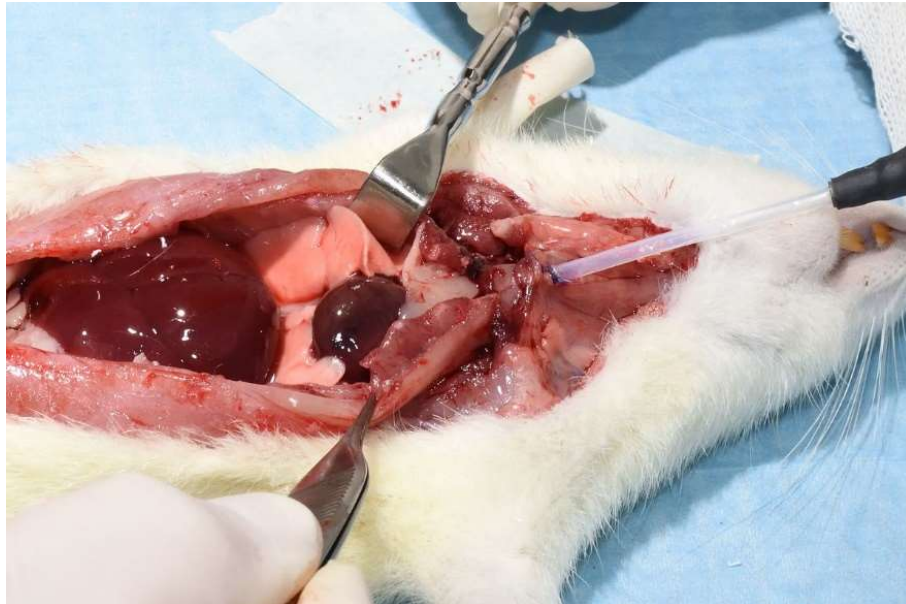
1. Intrahepatic administration of Heparin (1000 U/kg). After 5 min, euthanasia was carried out using sodium thiopental (250 mg/kg) administered by the same route.



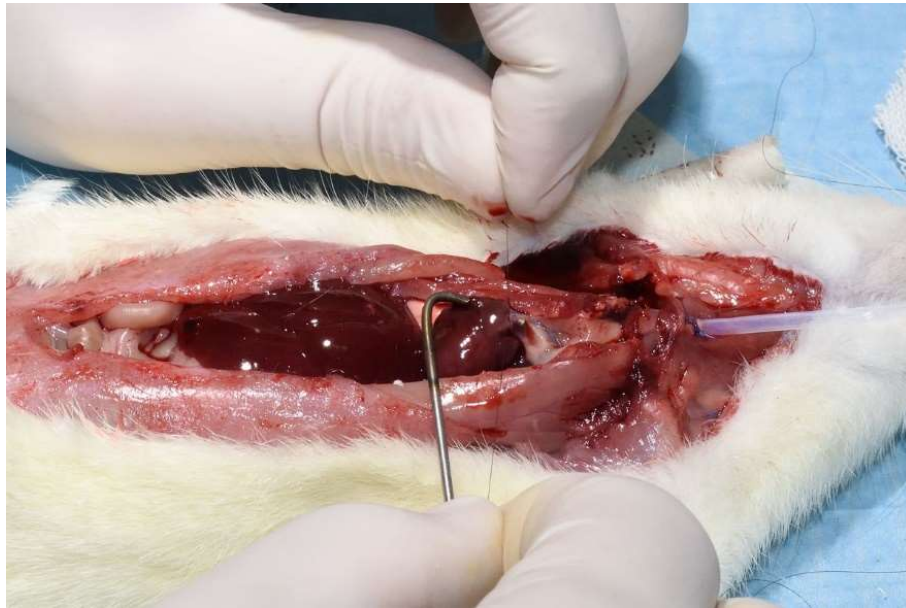
2. Intubation by tracheotomy.



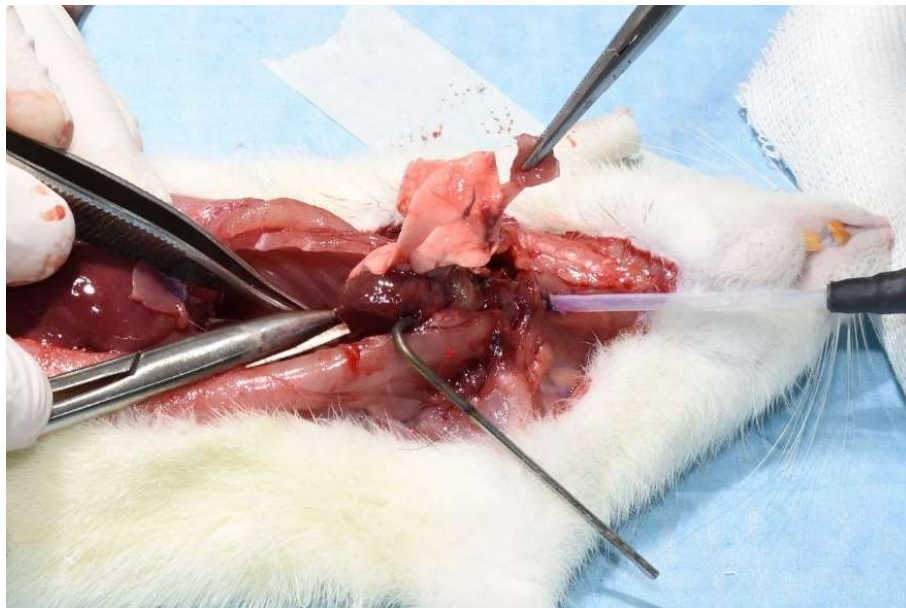
3. Mechanical ventilation and median sternotomy.



4. Placement of the cannula in the pulmonary artery through the right ventricle.



5. Ablation of the lungs.



6. Washing with physiological solution. Note the placement of the cannula in the pulmonary artery.



7. Positioning of the lungs for the administration of cells and reperfusion.

