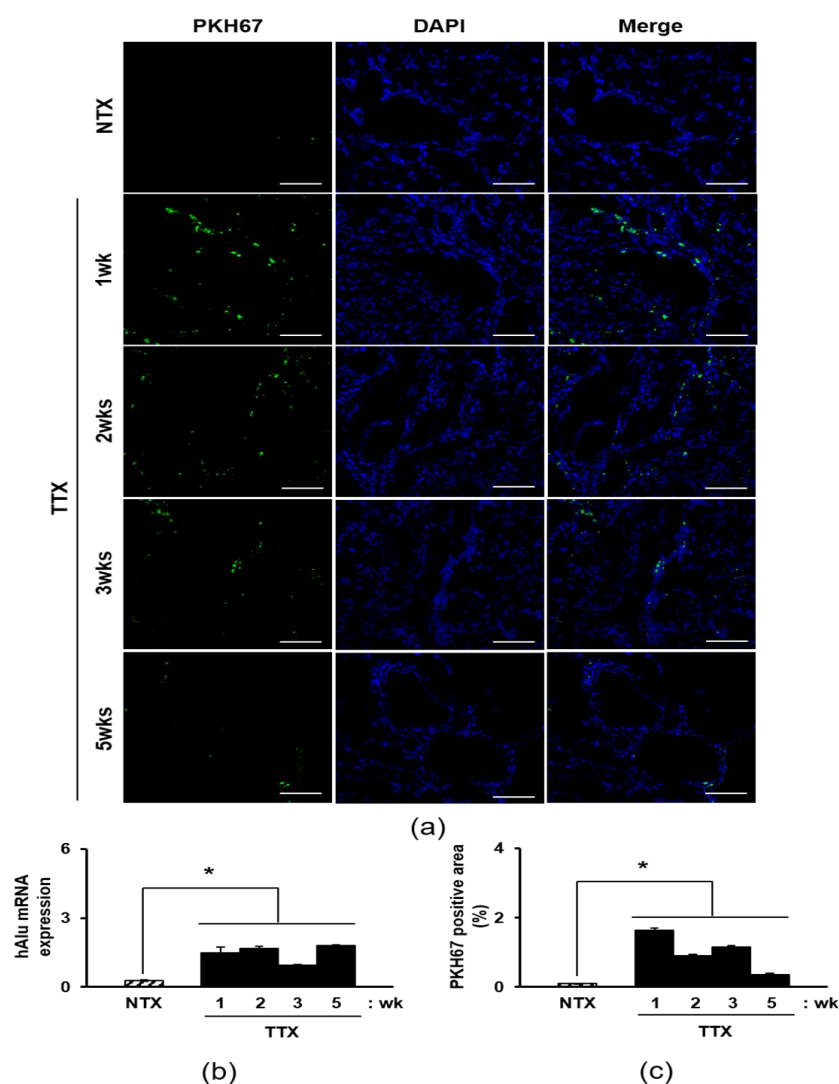
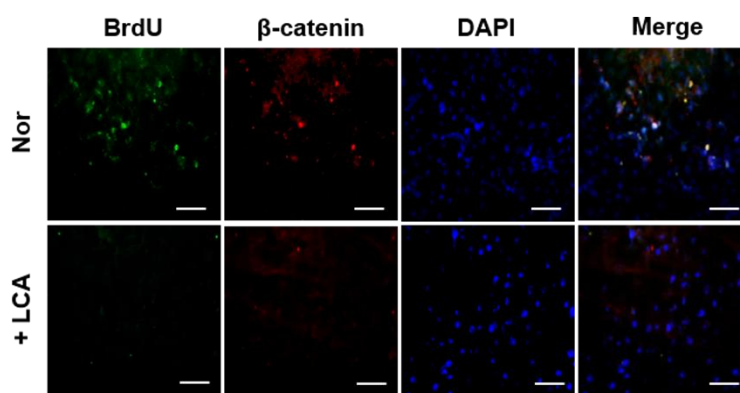


484 **Supplementary Materials**

SUPPLEMENTARY FIGURE 1: Engraftment and tracing of PKH67 fluorescence labeled human PD-MSC in BDL-injured rat livers. The engrafted PD-MSCs into the rat liver were detected and traced by labeling the PKH67 (green) using fluorescence microscope (a) and (c). n=5 per group, Scale bars: 20μm. The expression of human-specific Alu sequence in BDL-injured rat livers after PD-MSCs transplantation using quantitative real-time PCR analysis (b). n=3 per group. *, NTX group vs; p<0.05. Data were represented as the mean ± SD.



SUPPLEMENTARY FIGURE 2: The representative images of immunofluorescence were stained with WB-F344s for β -catenin and BrdU in normal and LCA treated group. LCA, lithocholic acid-treated group. Scale bars: 50 μ m.