

Supplementary Table S1. Clinical and biochemical characteristics of patients

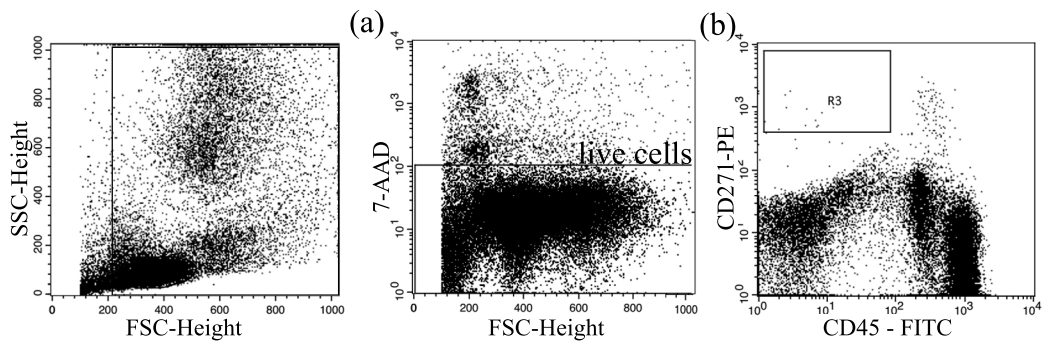
Parameter	SCD	NS	P value
N° of individuals	32	19	
Average Age of the donors	28.4 (10 – 55)	46.9 (24 – 74)	
Male	13 (40.62 %)	11 (57.90 %)	
Female	19 (59.38 %)	8 (42,10 %)	
Localization			
Femoral Head	16	9	
Knee	6	0	
Hip	16	4	
Hematological Data			
Hb (g/L)	10.08 ± 1.78	11.90 ± 3.81	0.0054
Hematocrit (%)	17.90 ± 11.99	37.11 ± 8.09	< 0.0001
Platelet count (x 10³/ μL)	342.4 ± 154.9	168.6 ± 79.82	< 0.0001

Demographic and baseline biochemical characteristics of subjects are presented in Supplementary Table. All variables presented as mean (range), n (%) or mean (standard deviation). Abbreviations: Hb, Hemoglobin.

Supplementary Table 2. Data with MSC count/mL respective to Fig 3b

Patient	Age	Gender	Group	CD271⁺CD45^{-low}	CFU-F
1	10	F	SCD	2480	50
2	15	F	SCD	7800	30
3	12	M	SCD	7880	595
4	12	F	SCD	21870	110
5	12	F	SCD	3480	110
6	18	F	SCD	8140	30
7	24	F	NS	16800	760
8	25	M	SCD	14410	360
9	26	M	SCD	2550	20
10	29	M	NS	11280	10
11	30	F	SCD	5820	20
12	43	M	NS	6660	50
13	44	F	SCD	3456	120
14	45	M	NS	1710	40
15	49	F	NS	2320	120
16	53	F	NS	7840	12
17	55	F	SCD	6580	40
18	57	F	NS	2960	15
19	59	M	NS	1106	10
20	74	F	NS	3050	12

Abbreviations: F, female; M, male, CFU-F, Colony-forming unit fibroblast; MSC, mesenchymal stromal cells



Supplementary Figure S1: Gating strategy for the frequency of CD271⁺CD45^{-low} cell phenotype. Cell debris are removed from the analysis based on forward scatter. (a) Dead cells are gated out based on the uptake of 7-AAD. (b) Frequency assessment of CD271⁺CD45^{-low} cells are based on a simple rectangular gate.