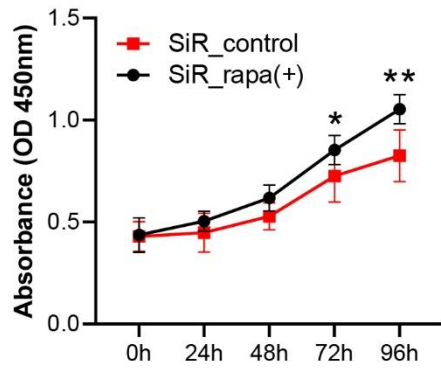
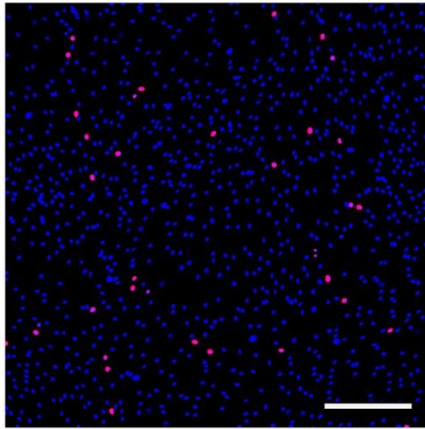
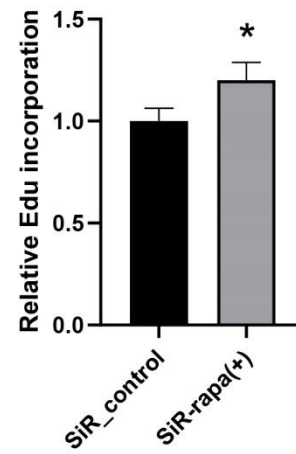


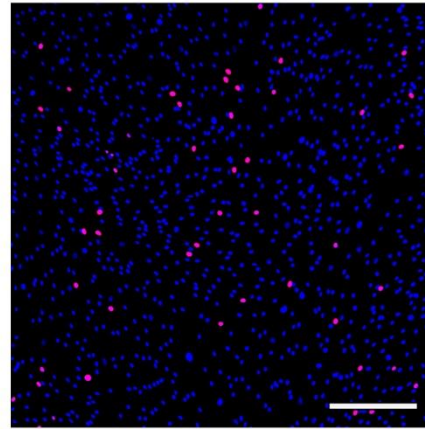
A



B

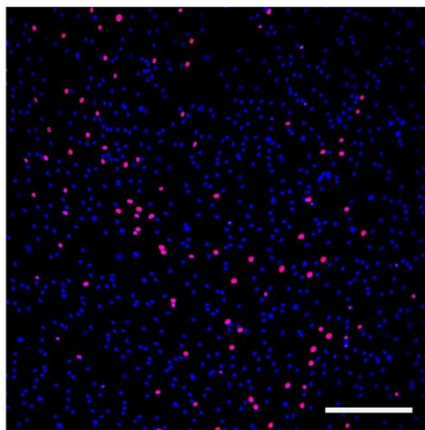
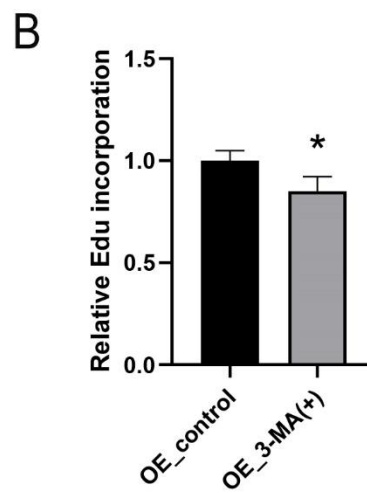
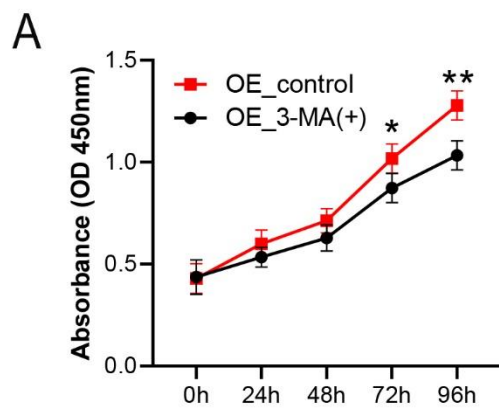


SiR-control

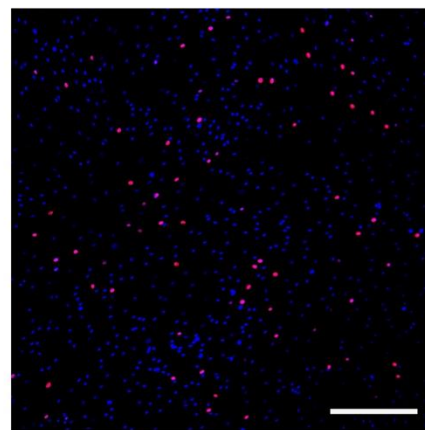


SiR-rapa(+)

Supplementary FIGURE S1: Rapamycin as an autophagy inducer increased cell proliferation in YTHDF1-knockdownBMSCs. The CCK-8 assay (a) and EdU incorporation assay (b) of YTHDF1-downregulated BMSCs following rapamycin treatment on days 3. Scale bar: 200 μ m. * $P < 0.05$, ** $P < 0.01$ compared to the control group.



OE_control



OE_3-MA(+)

Supplementary FIGURE S2: Inhibition of autophagy reduced cell proliferation in YTHDF1-upregulated BMSCs. The CCK-8 assay (a) and EdU incorporation assay (b) of YTHDF1-upregulated BMSCs following 3-MA treatment on days 3. Scale bar: 200 μ m. * $P < 0.05$, ** $P < 0.01$ compared to the control group.